

Reviewing Progress on Orange Avenue

*DSNID Advisory Council Update
April 10, 2018*



**our
SoDo**

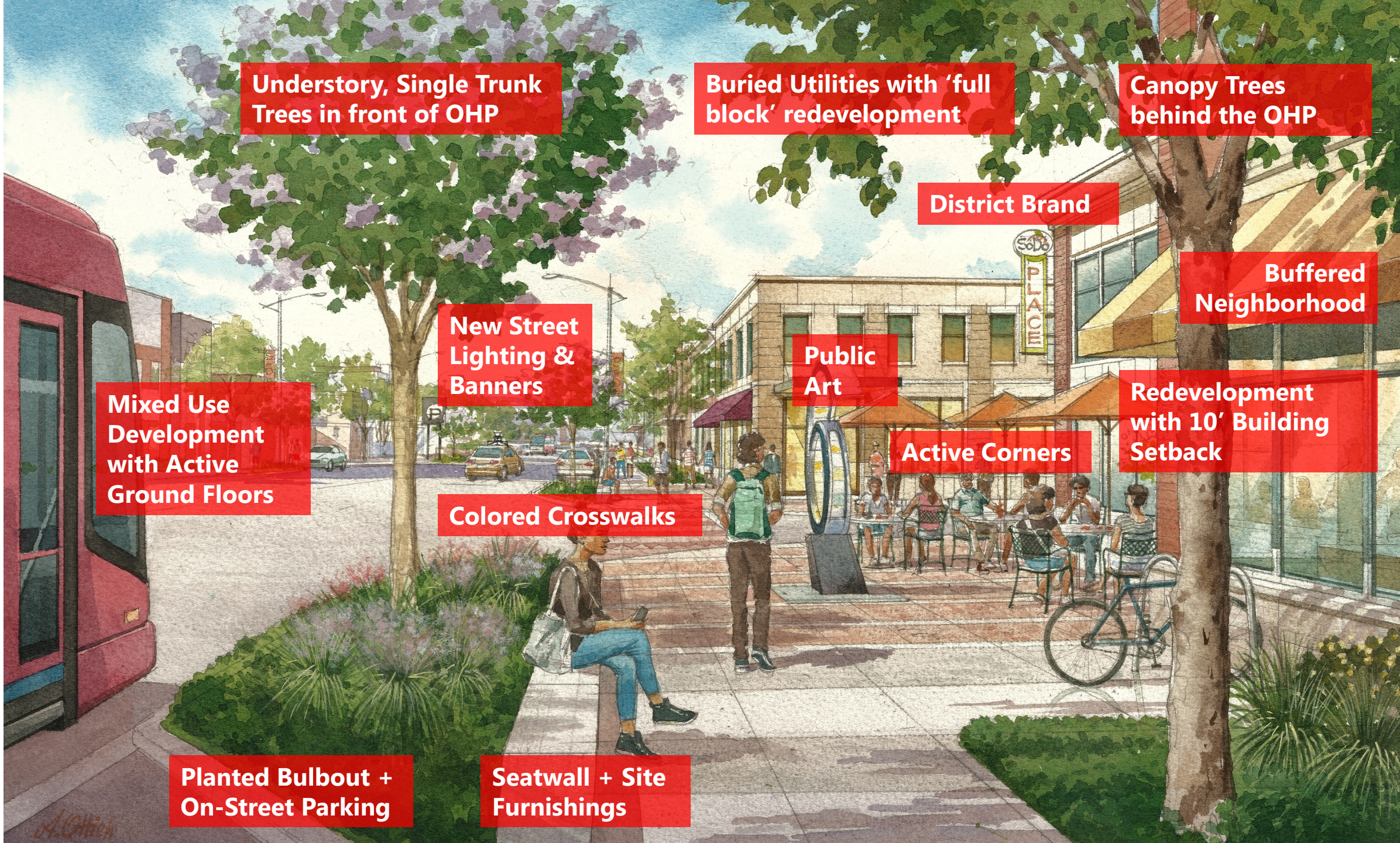


Vision Elements: Orange South of Harding



Vision Elements: Orange

South of Harding



**Understory, Single Trunk
Trees in front of OHP**

**Buried Utilities with 'full
block' redevelopment**

**Canopy Trees
behind the OHP**

District Brand

**Buffered
Neighborhood**

**Mixed Use
Development
with Active
Ground Floors**

**New Street
Lighting &
Banners**

**Public
Art**

**Redevelopment
with 10' Building
Setback**

Active Corners

Colored Crosswalks

**Planted Bulbout +
On-Street Parking**

**Seatwall + Site
Furnishings**

Some ideas incorporated, some budget or program limitation with this FDOT project. No future options are 'precluded'.



Key Topics if FDOT receives "partnered" funding

Special Pavement at Intersections – FDOT willing to do Stamped / Colored Asphalt.

Landscaping – Not in project. FDOT willing to create 'sleeved and prepped areas' for future planting.

Curb Extensions – FDOT only doing 'floating bulb-outs'. Willing to consider aesthetic treatment options.

Sidewalks - FDOT only working at intersections. (Some areas of existing walks are outside R.O.W.)

Special Milling – FDOT willing to look at reductions in centerline 'high point'.

Lighting – FDOT only replacing lighting at signalized intersections.

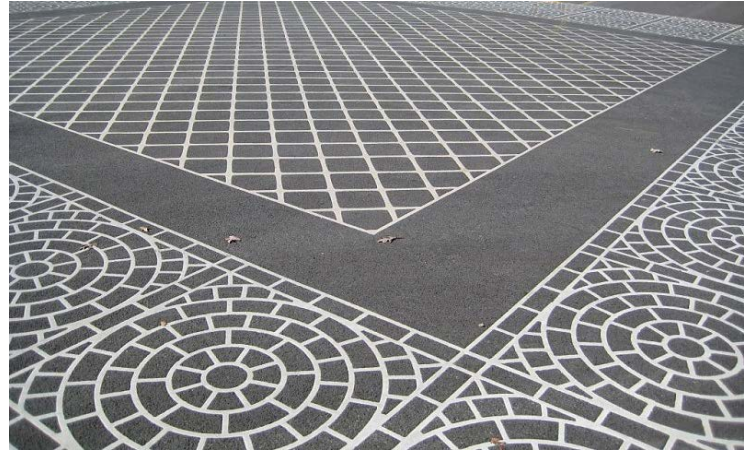
Project Boundaries – FDOT willing to consider extending 50'-100' past Grant St ROW line to 'finish' intersection

Corner Clips – FDOT is NOT including any corner clips in this project



Orange Ave: Crossing Details

Items for DSNID Consideration / Input: Pavement + Graphic Treatments



Line Art Patterns, highly graphic, not trying to be 'real' materials. Meant to be 'Graphic'.

Looking at the Special Pavement Markings

Impressed



\$15-\$20/SF

Inlaid



\$14-\$18/SF

Interconnected



\$14-\$18/SF – Std
\$25-\$35 / SF – Custom*

Overlay



\$14-\$18/SF

Logos/Signage

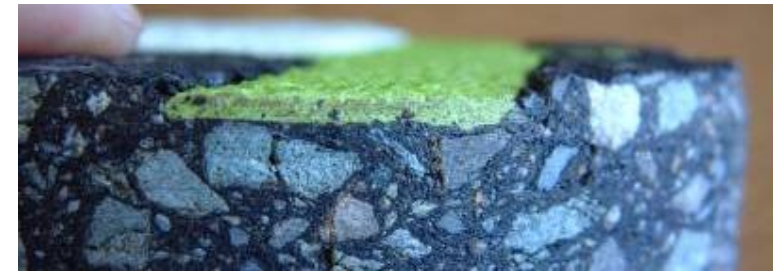
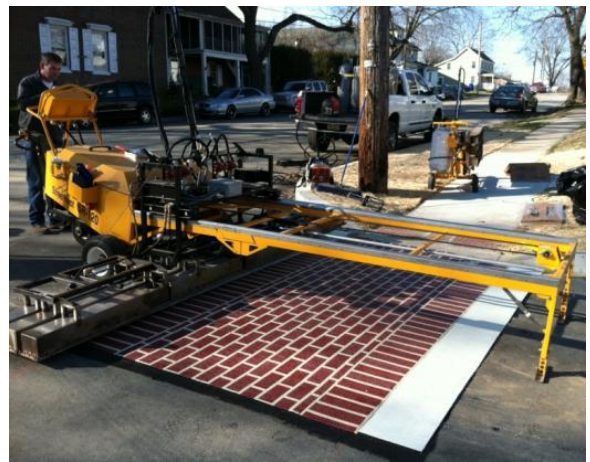


\$35/SF

Order of Magnitude Pricing provided by Ennis-Flint product representative as 'rule of thumb' installed prices

Orange Ave: Crossing Details

Process: Stencilled Patterns or 2 x 2 Squares, Digitally Printed, Heat Bonded
90 minutes per lane to install and make drivable.



Orange Ave: Crossing Details

Custom Patterns digitally printed as 2 x 2 squares & heat bonded to asphalt

Special Patterns can be printed and installed as 2'x2' squares (\$35/sf); or existing patterns can be arranged in new ways at \$14-\$20 / SF)



We thought about some complex ideas and inspiration

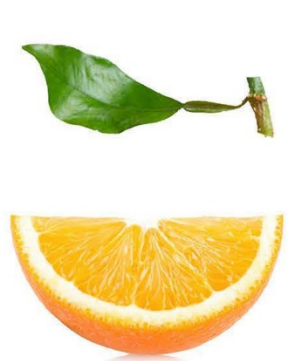
orange ave + sodo (orange logo) = orange motif



=



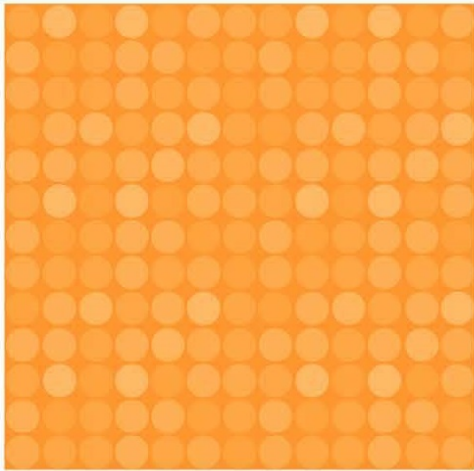
simple idea, complex breakdown



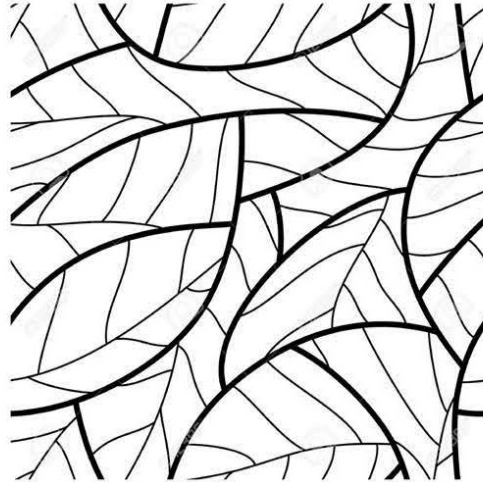
Orange Ave: Crossing Details

We thought about some complex ideas and inspiration
inspired pattern exploration (orange deconstruction)

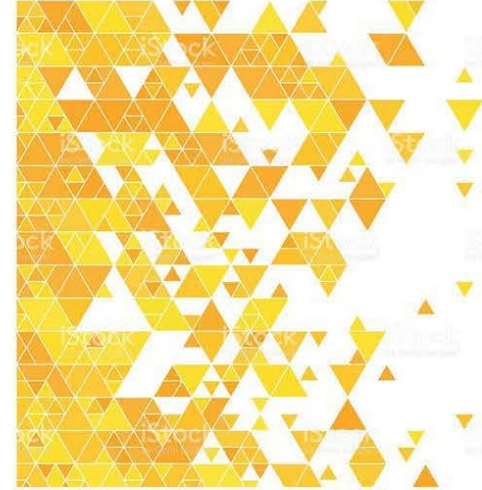
gore (orange body)



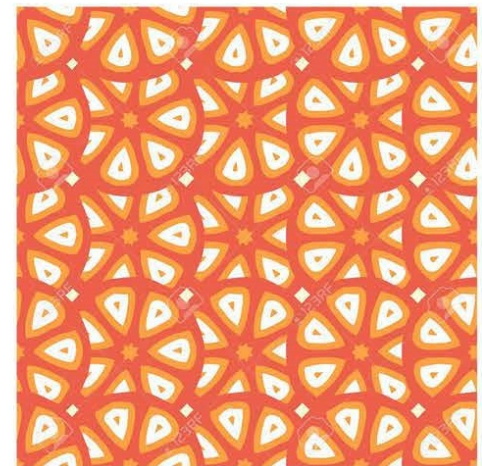
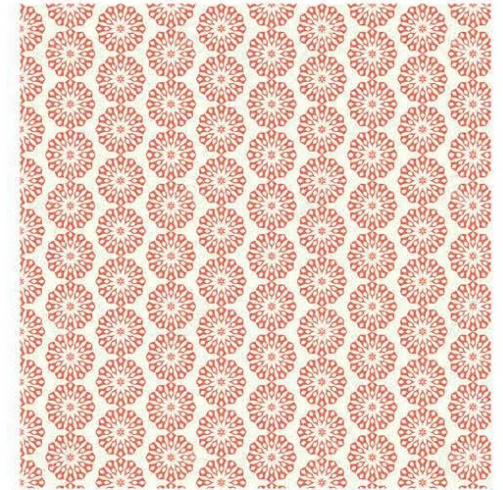
miller (leaf)



kaley (slice)



michigan (blossom)



Orange Ave: Crossing Details

We also worked on some options that followed available standard patterns



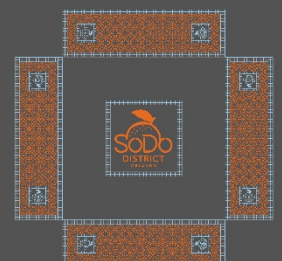
DSNID Intersection
Duratherm Treatments



GREEN ORANGE



BLUE ORANGE GREEN



ORANGE BLUE



YELLOW GREEN

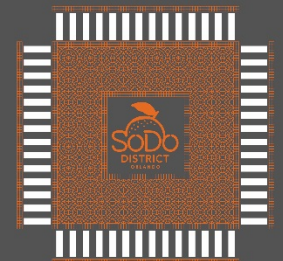
DSNID Intersection
Duratherm Treatments



GREEN



BLUE



ORANGE



YELLOW

Orange Ave: Crossing Details

We did lots of elaborate studies, but ultimately landed on a more 'straightforward' solution



Orange Ave: Crossing Details

Working with Standard DuraTherm Materials in conjunction with SODO Logos and FDOT striping and required pedestrian crossing 'ladders'





WELLS
FARGO

Michigan

Arby's

McDonald's



Food Mart

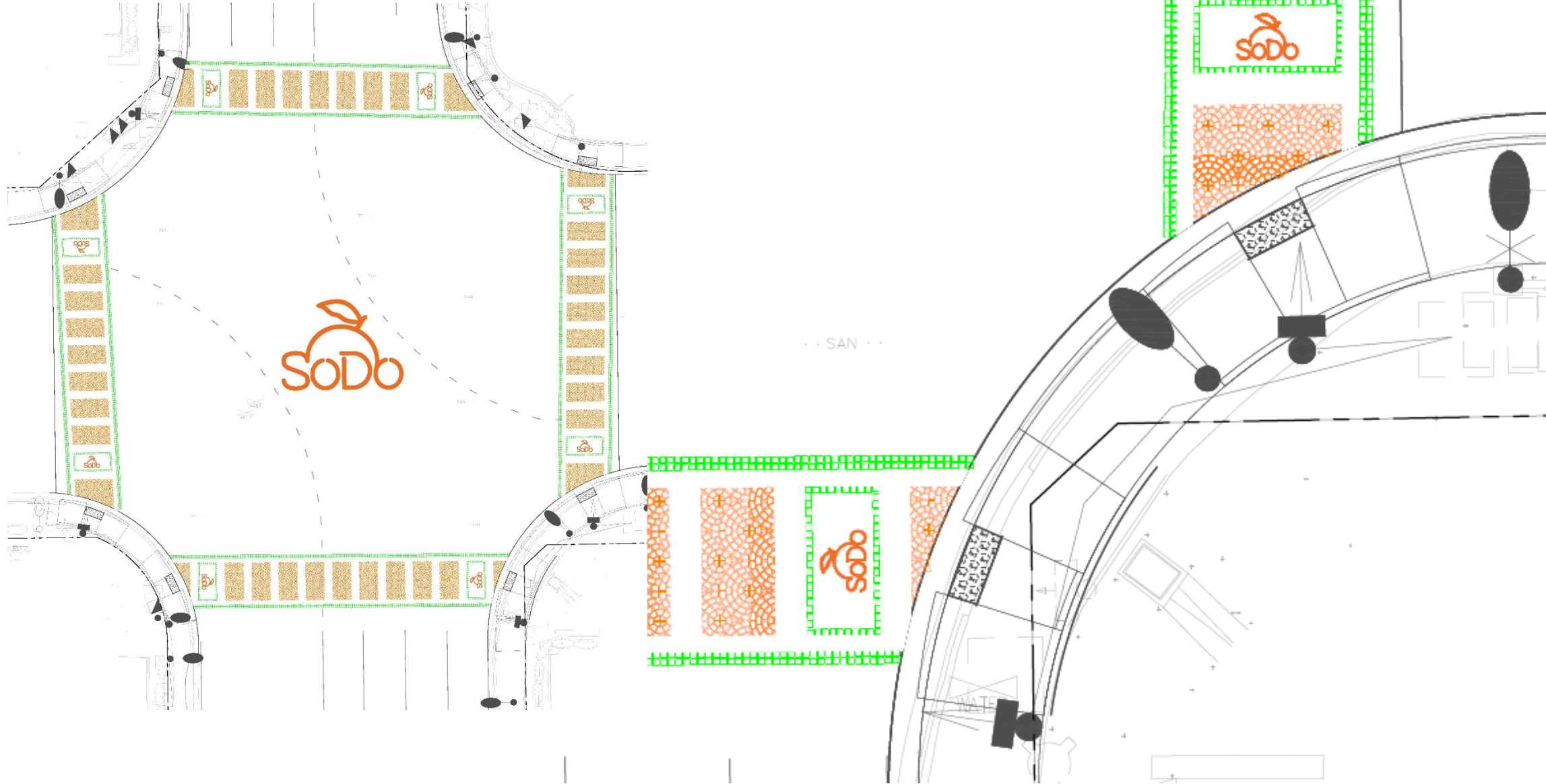
FOR LEASE
407-930-1800

SOLO
DISTRICT
MICHIGAN FREE

SOLO
DISTRICT
MICHIGAN FREE

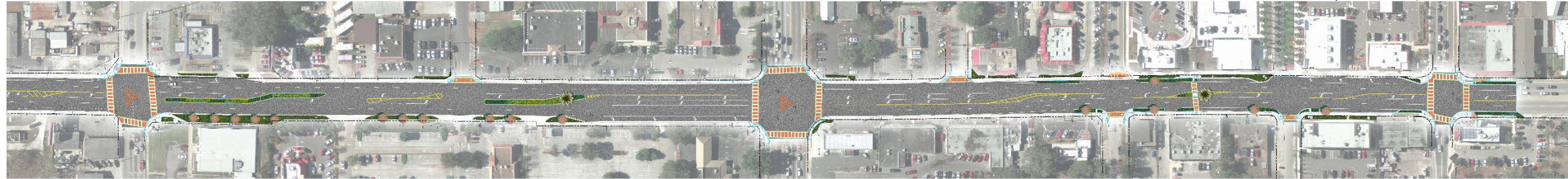
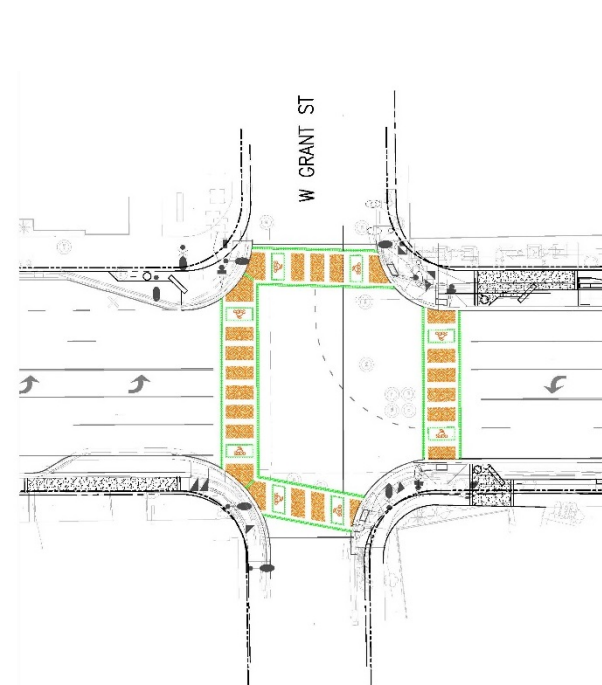
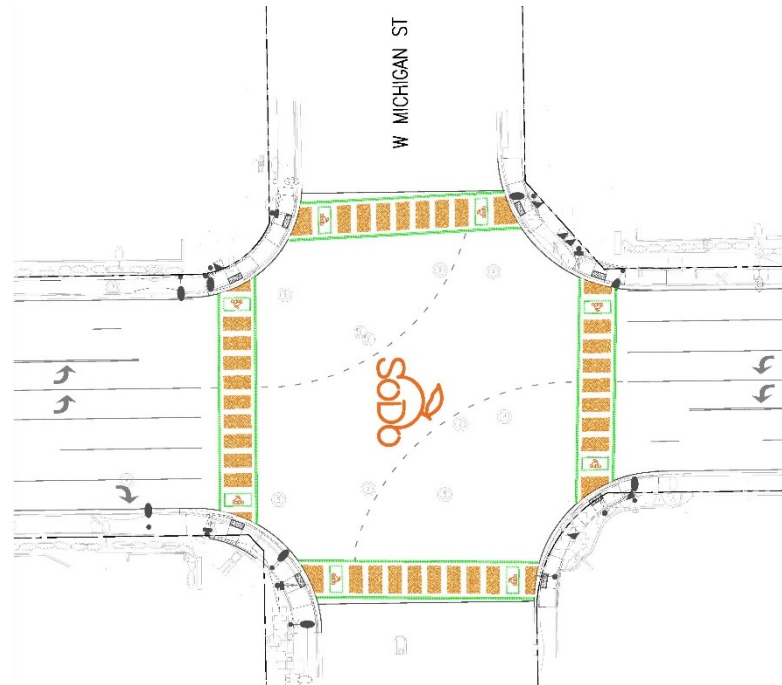
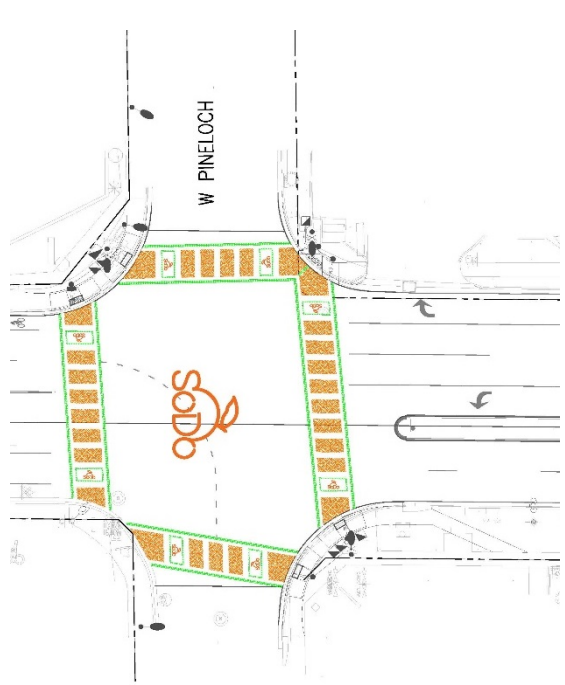
Orange Ave: Crossing Details

Working with Standard DuraTherm Materials in conjunction with SODO Logos and FDOT striping and required pedestrian crossing 'ladders'



Orange Ave: Crossing Details

Working with Standard DuraTherm Materials in conjunction with SODO Logos and FDOT striping and required pedestrian crossing 'ladders'



Pine Loch

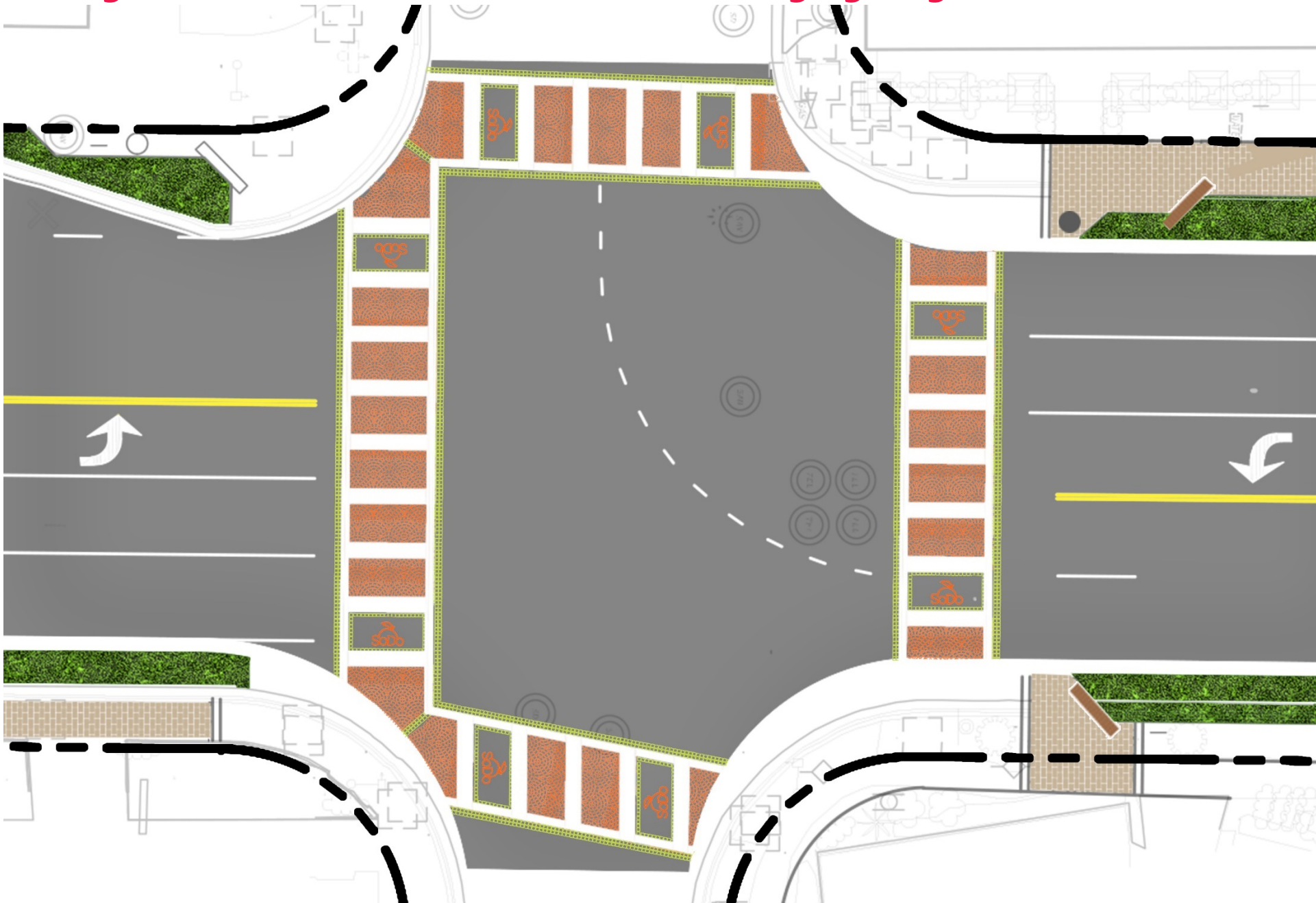
Michigan

Midblock

Grant

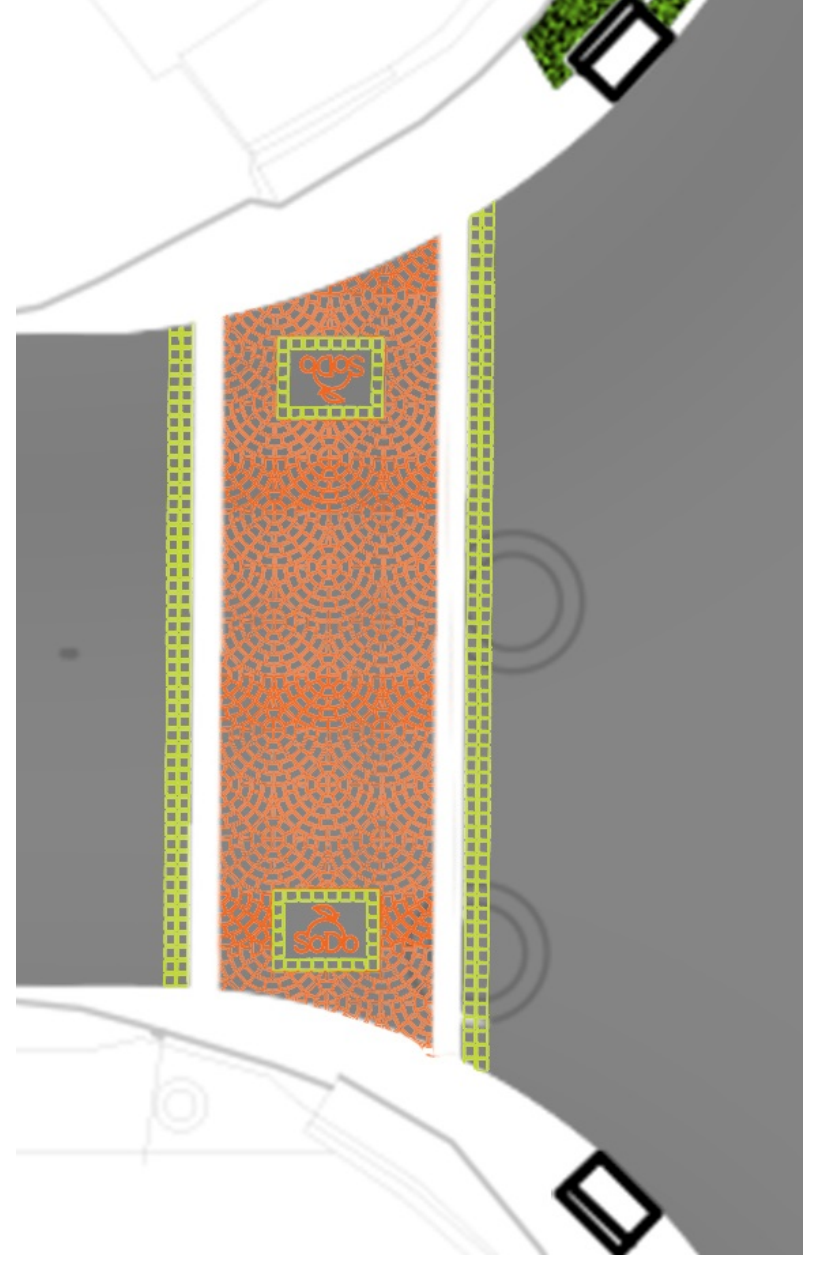
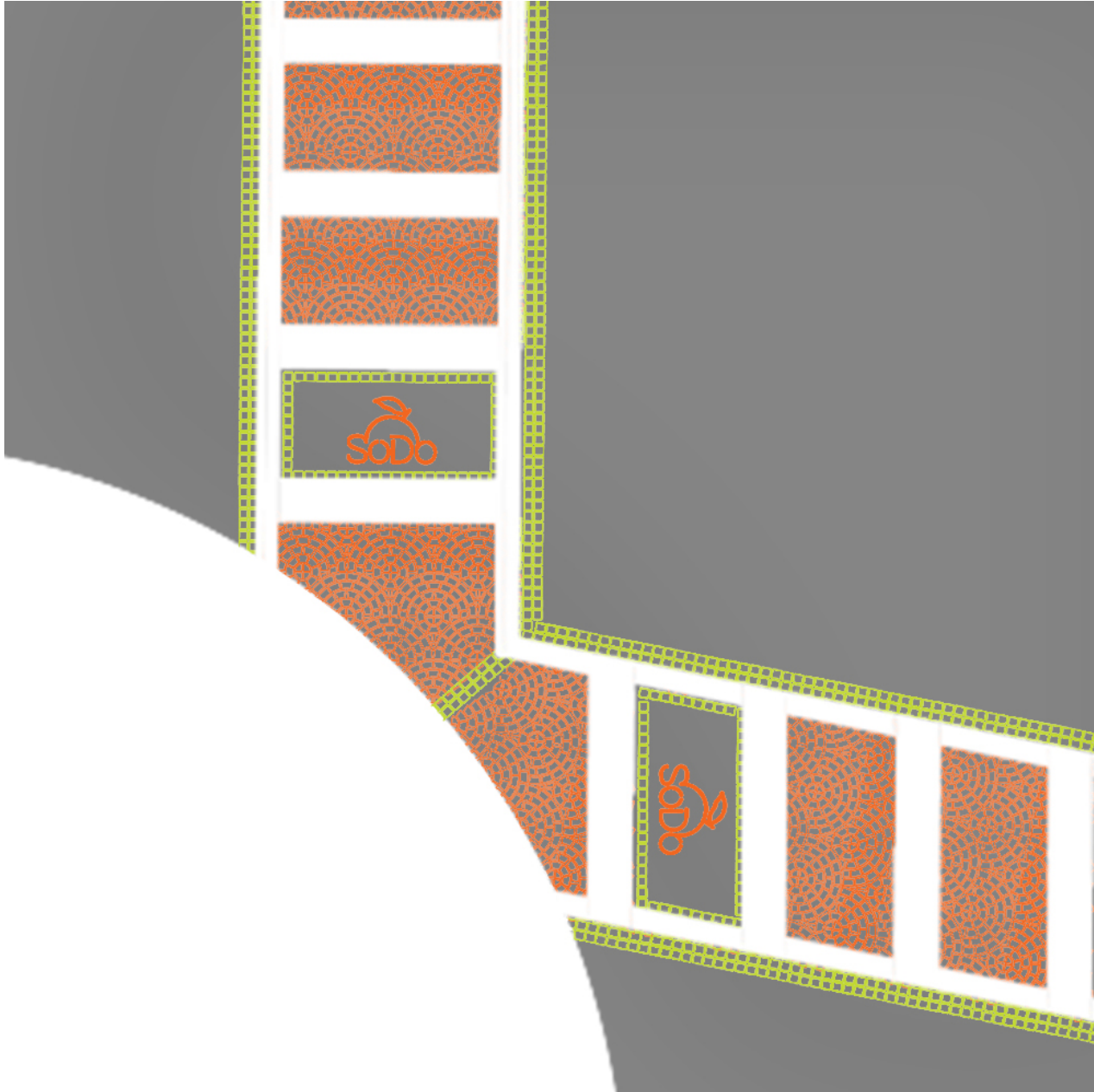
Orange Ave: Crossing Details

Orange DuraTherm in middle, Lime Green edging, Logo in the Crosswalk



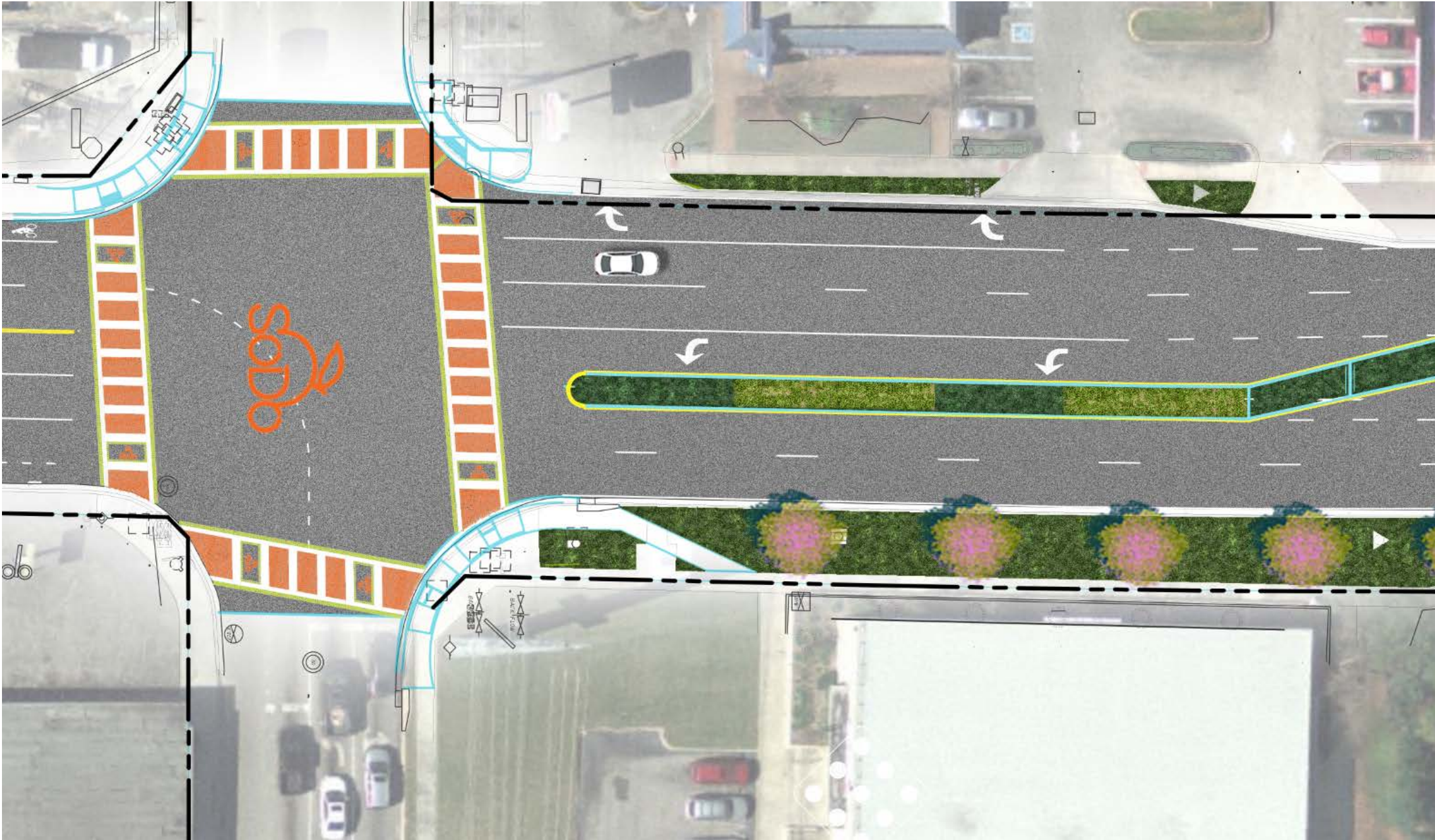
Orange Ave: Crossing Details

Orange DuraTherm in middle, Lime Green edging, Logo in the Crosswalk



Orange Ave: Crossing Details

Pineloch Entry



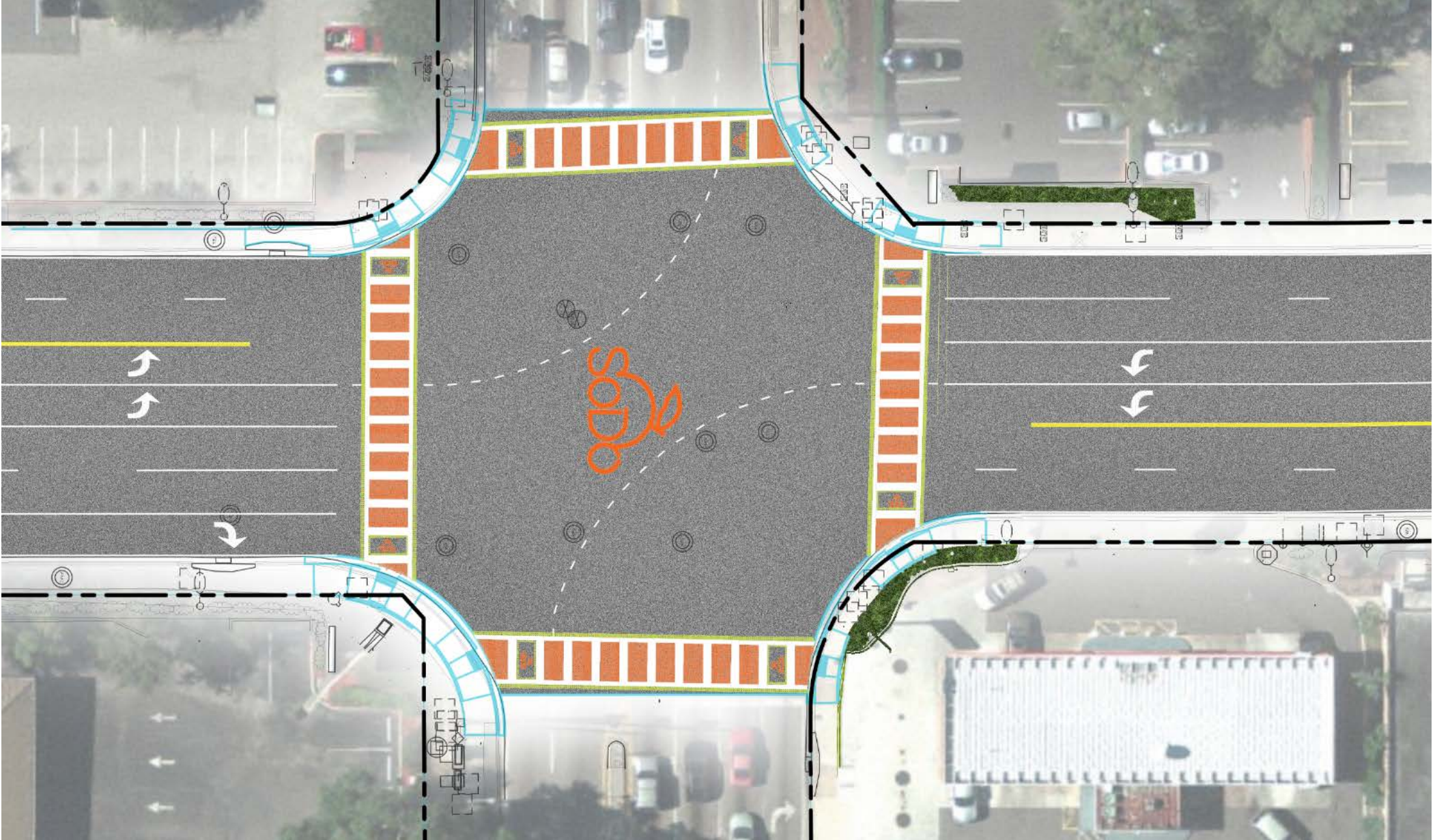
Orange Ave: Crossing Details

Median at Illiana / ABC



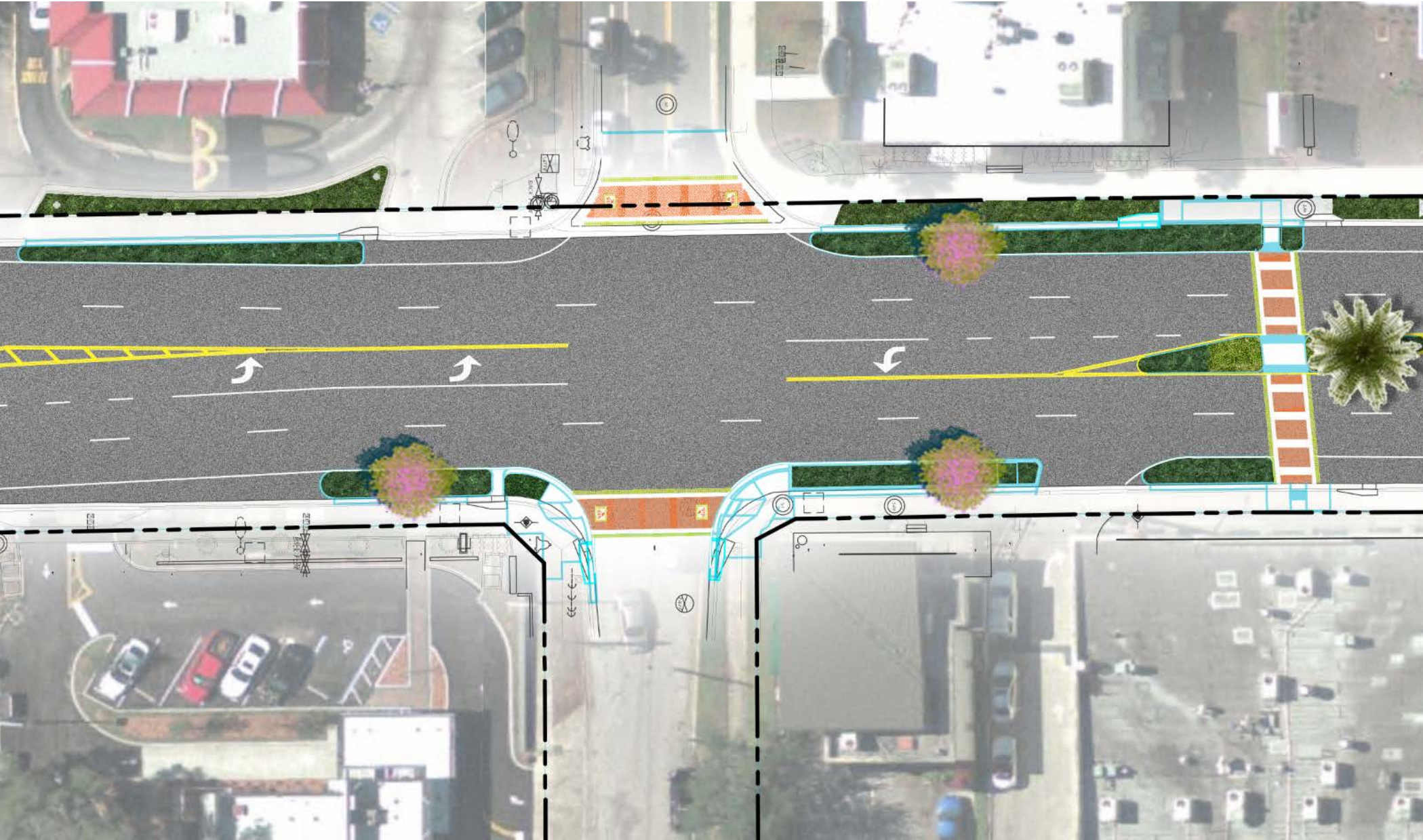
Orange Ave: Crossing Details

Michigan / Orange Crossings with Logo



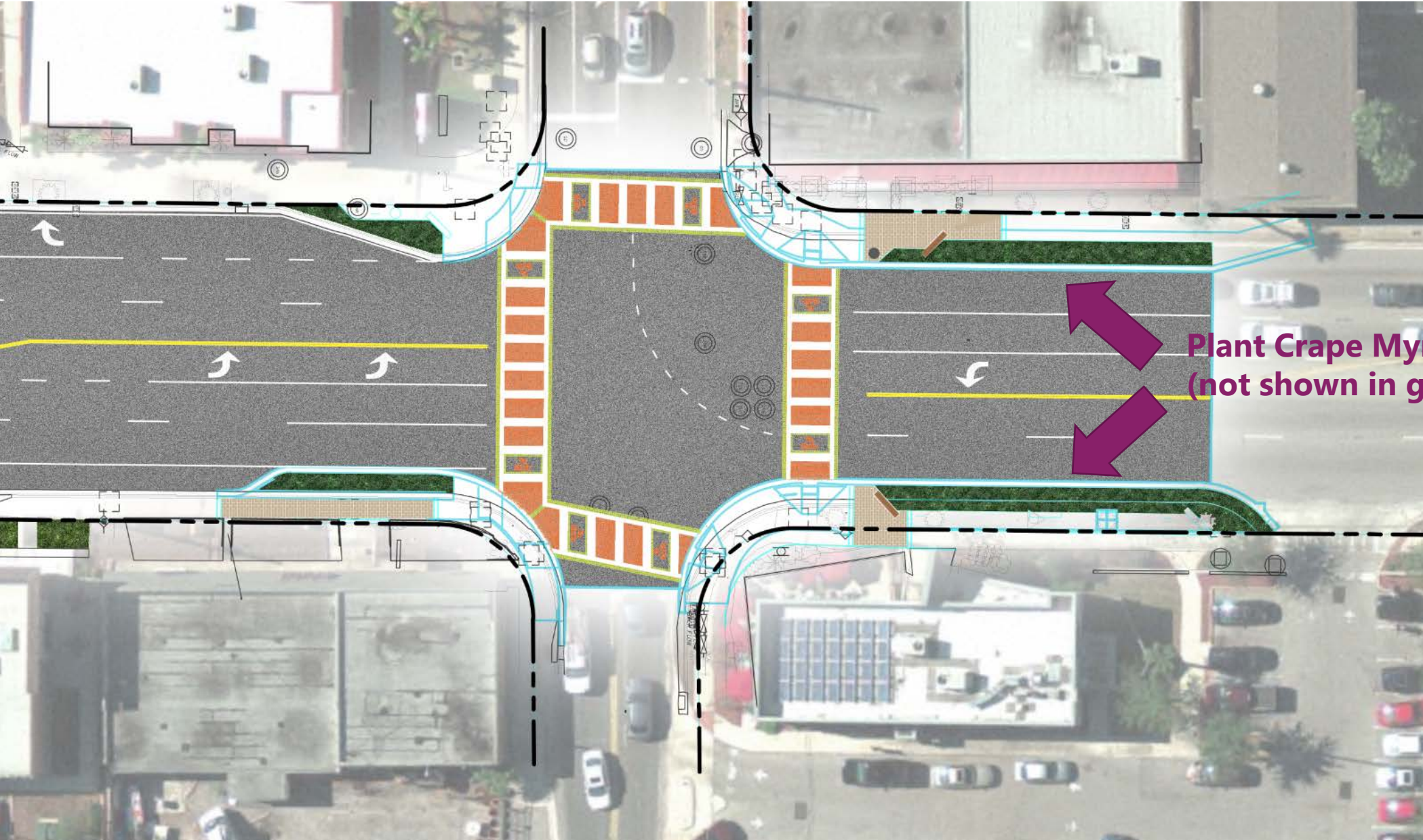
Orange Ave: Crossing Details

Page / Main (Entry to SODO) with Midblock Crossing



Orange Ave: Crossing Details

Grant Street



Plant Crape Myrtles!
(not shown in graphic)

Orange Ave: Crossing Details

Orange DuraTherm in middle, Lime Green edging, Logo in the Crosswalk



Orange Ave: Plant Materials

Using materials commonly used without irrigation in roadway / FDOT settings. Highly durable, drought (xeric) & wet tolerant...found in DSNID



Muskogee Crape Myrtle (65 gal, 8' Clear Trunk for FDOT site lines). Some Oak. Sylvester Palm.

Orange Ave: Plant Materials

Using materials commonly used without irrigation in roadway / FDOT settings. Highly durable, drought (xeric) & wet tolerant...found in DSNID



Hardy Shrubs like Zamia, Plumbago and Indian Hawthorne

Orange Ave: Plant Materials

Using materials commonly used without irrigation in roadway / FDOT settings. Highly durable, drought (xeric) & wet tolerant...found in DSNID



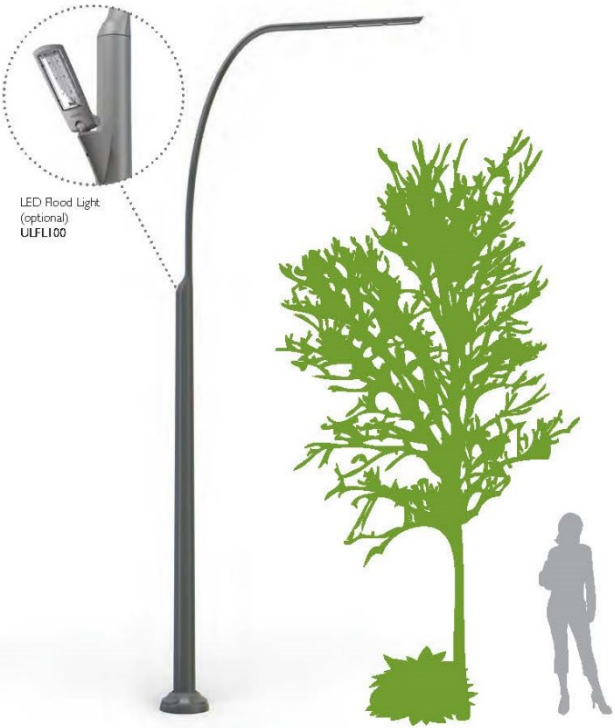
Hardy Grasses like Dwarf Fakahatchee, Miscanthus and Flax Lily

Working w OUC on a fixture by Sole City: LED, PV, Colors, etc

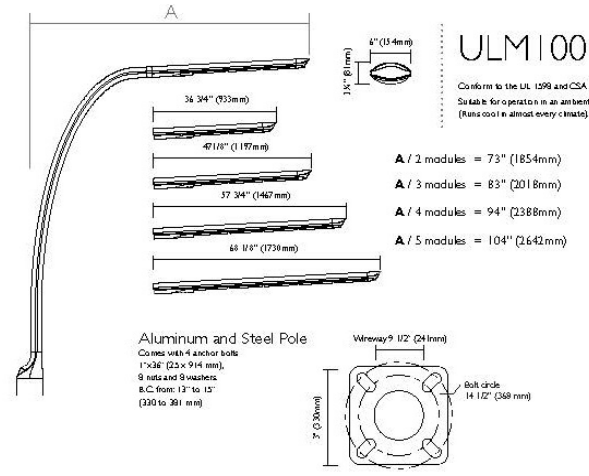
SoleCity Overview

www.lightingproducts.philips.com

SoleCity Medium LED Street and Area Luminaire Data Sheet



Small LED Street and Area Luminaire 20'
Luminaire: ULS100
Bracket: UBS100-1A
Pole: UPS100



LED Lamp Details

LED = Philips Lumileds Rebel ES, CRI = 70, CCT = 4000K (+/- 350K)
System (LED + driver) rated life = 100,000 hrs¹

Lamp	Typical delivered lumens ²	Typical lamp wattage ³ (W)	Typical system wattage ³ (W)	Typical current @ 120 V (A)	Typical current @ 240 V (A)	Typical current @ 277 V (A)	LED current (mA)	HPS equivalent ⁴	Luminaire Efficacy Rating (Lm/W)
70W64LED4K-R	6410	72	86	0.72	0.36	0.31	350	100W	90
110W84LED4K-R	9230	108	135	1.13	0.56	0.49	530	150W	84
110W98LED4K-R	9400	108	130	1.08	0.54	0.47	350	150W	90
160W98LED4K-R	13890	162	202	1.68	0.84	0.73	530	200W	84
145W128LED4K-R	12780	144	172	1.43	0.72	0.62	350	200W	90
215W128LED4K-R	18440	216	270	2.25	1.13	0.97	530	250W	84
180W160LED4K-R	16200	180	190	1.58	0.79	0.69	350	200W	90
270W160LED4K-R	23140	270	276	2.30	1.15	1.00	530	310W	84

1 L70 = 100,000 hrs (at ambient temperature = 25°C and forward current = 700 mA).
2 May vary depending on the optical distribution used.
3 System wattage includes the lamp and the LED driver.
4 Compared to Capella (equivalent wattage should always be confirmed by a photometric layout).

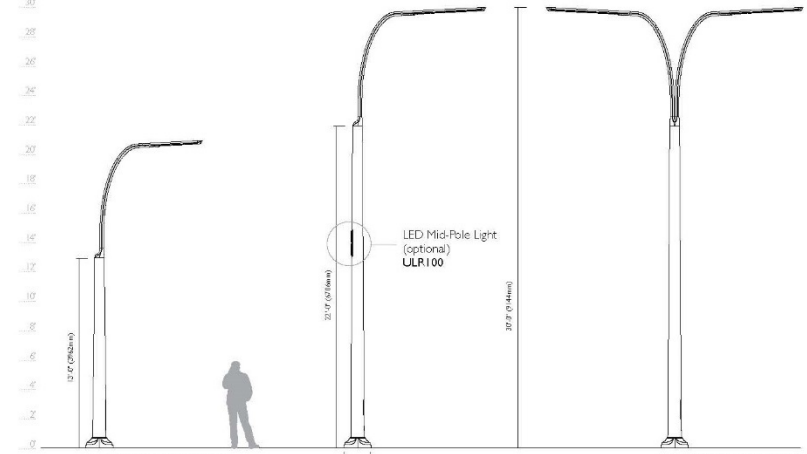
Finish

- GR Gray Sandtex
- WHTX Textured White
- BLKX Textured Black
- GY3TX Textured Medium Grey
- BPTX Textured Bronze
- BG2TX Textured Sandstone
- BE2TX Textured Midnight Blue
- BE6TX Textured Ocean Blue
- BE8TX Textured Royal Blue
- GNTX Textured Green
- GN4TX Textured Blue Green
- GN6TX Textured Forest Green
- GN8TX Textured Dark Forest Green
- PD2TX Textured Burgundy
- PD4TX Textured Scarlet
- TS Hammettone Silver
- TG Hammettone Gold
- NP Natural Aluminum

Ordering Example

Luminaire	Lamp	Optical System	Voltage	Driver Options	Luminaire Options	Bracket	Pole	Finish
ULM100	180W/160LED4K-R	LE3	120	CDHG	PH8	UBH100-1A	UPH100-20	GR

Assembly Example



Orange Ave: Lighting Option

Working w OUC on a fixture by Sole City: LED, PV, Colors, etc



Orange Ave: Lighting Option

Mounting Options, Furnishings and other Lighting Features.



Thank You

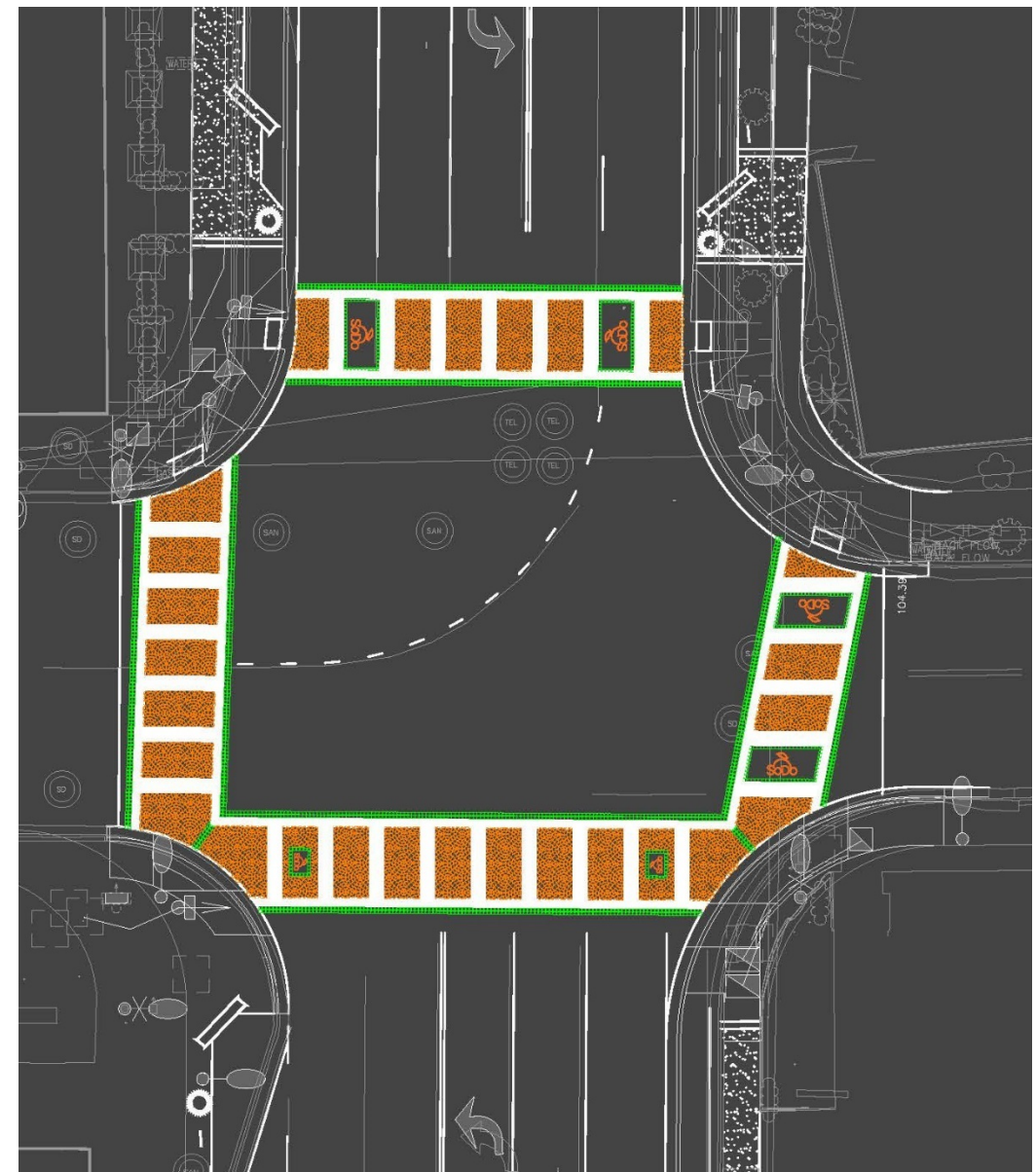
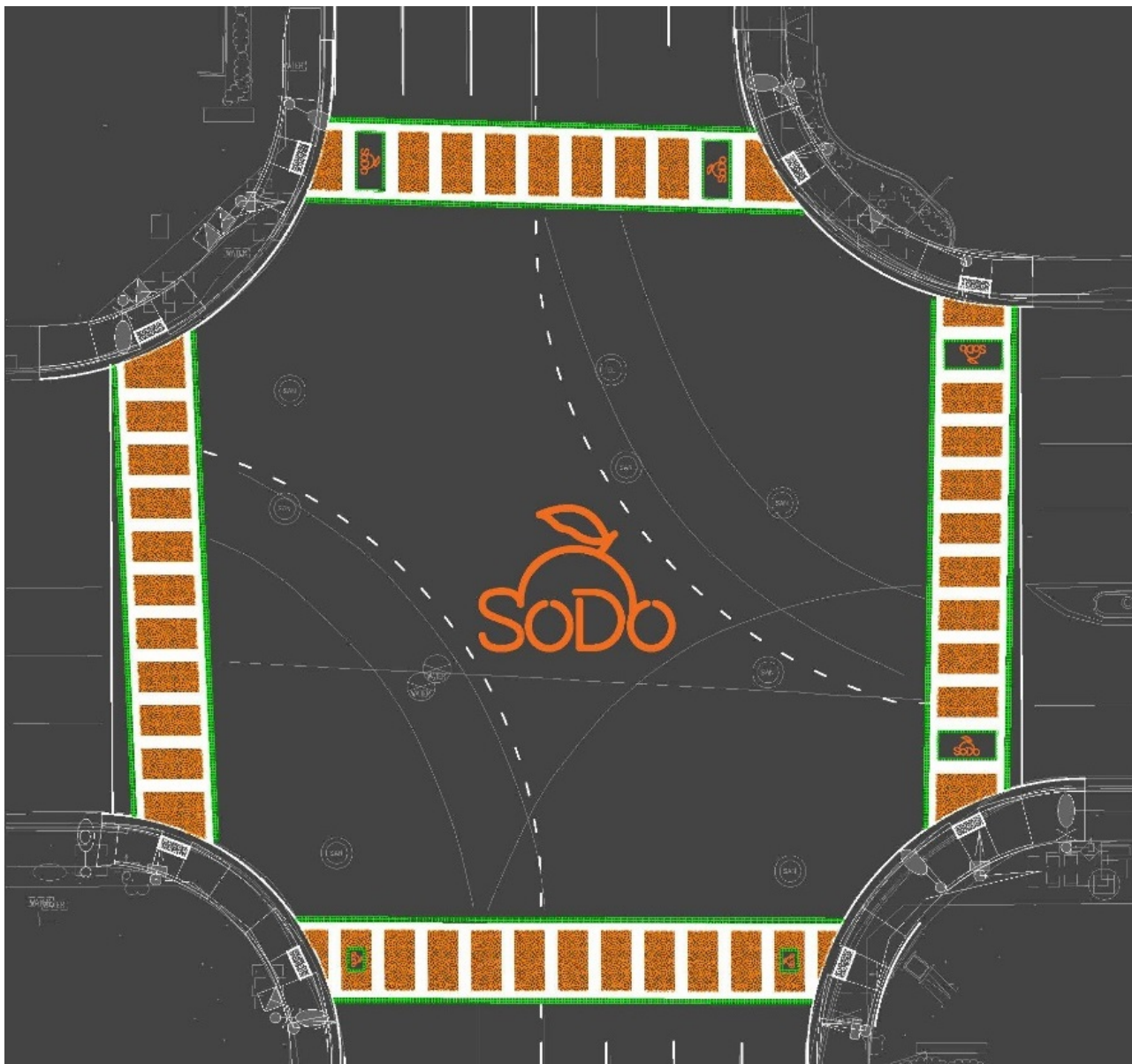
DSNID Advisory Council Update
April 10, 2018

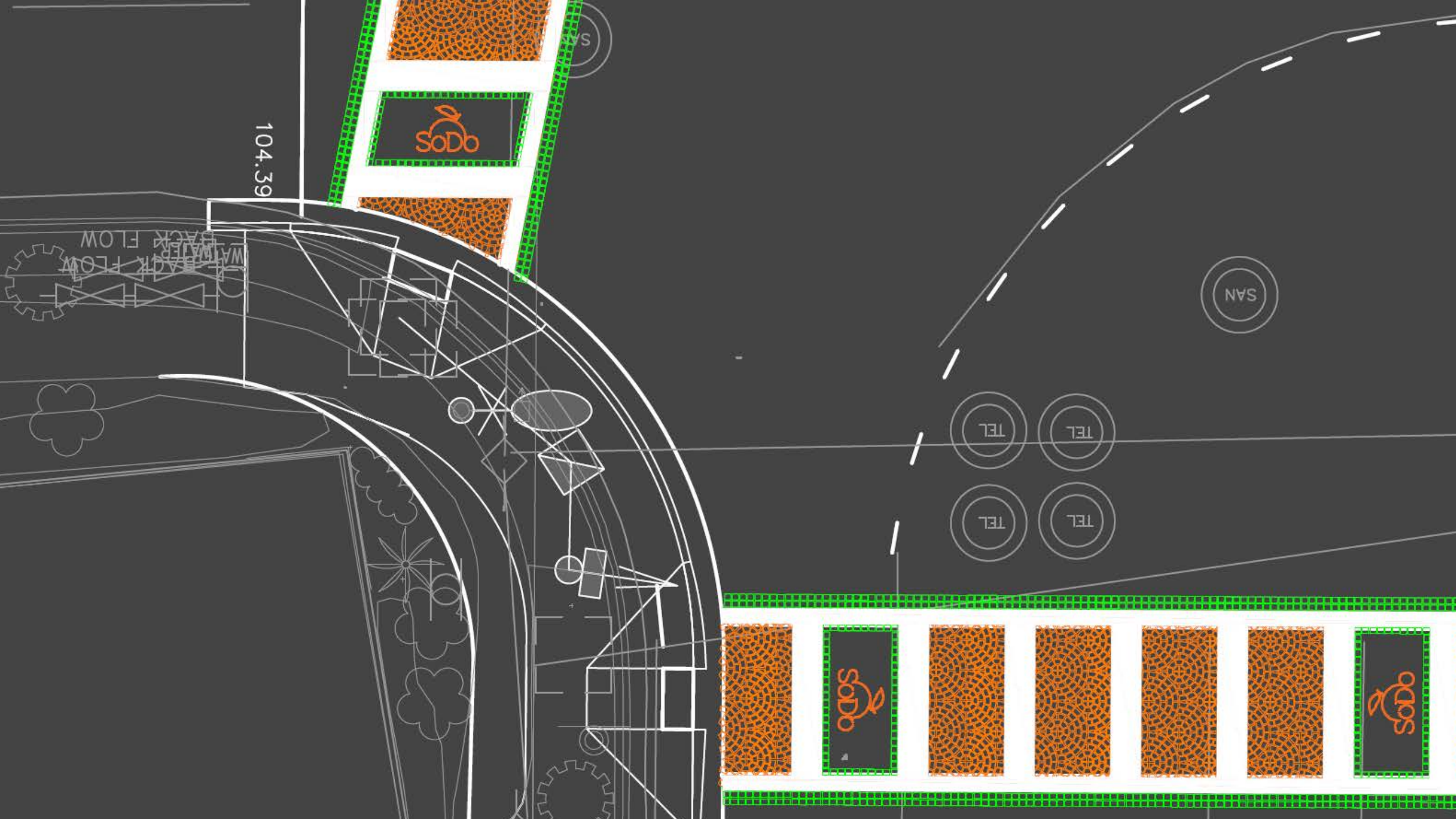


our
SoDo

Orange Ave: Crossing Details

Working with Standard DuraTherm Materials in conjunction with SODO Logos and FDOT striping and required pedestrian crossing 'ladders'





104.39

WATER BACK FLOW
WATER BACK FLOW

SODO

SAN

SAN

TEL

TEL

TEL

TEL

SODO

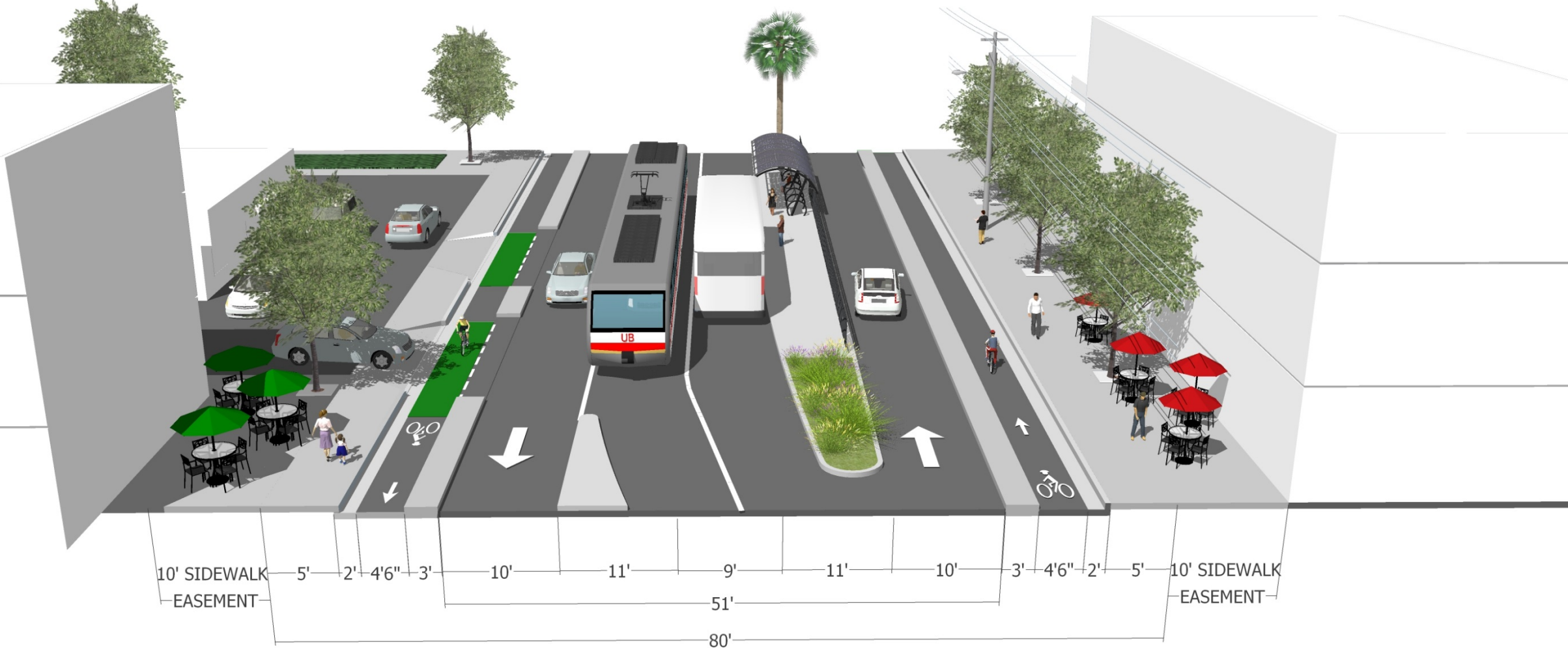
SODO

Grant / Orange Intersection

Visualizations



Orange Avenue 4a: Dedicated Transit with Bike Lanes





Michigan / Orange Intersection





WELLS
FARGO

Michigan

Arby's



Food Mart

FOR LEASE
407-930-1800

SOLO
DISTRICT
MORGAN HILL

SOLO
DISTRICT
MORGAN HILL



WELLS
FARGO

Michigan

NO
TURN
ON
RED

NO
TURN
ON
RED

NO
TURN
ON
RED



Food Mart



FOR LEASE
407-930-1800

SOLO
DISTRICT
MICHIGAN FREE

SOLO
DISTRICT
MICHIGAN FREE