

Connect



- ▶ <http://www.sododistrict.org/>
- ▶ <http://www.cityoforlando.net/city-planning/downtown-south-neighborhood-improvement-district/>
- ▶ <https://www.facebook.com/sododistrict/>
- ▶ <https://twitter.com/thesododistrict>
- ▶ <https://www.instagram.com/sododistrict/>

SODO District Crime Prevention Meeting

November 1, 2017



Upcoming Meetings

SODO NID Board Meeting

November 8 at 9:00 A.M. (City Hall Sustainability Conference Room)

Agenda:

Police Sub Station Request

CareerSource Workforce Presentation

Master Plan

SODO Design and Development Guidelines Workshop(s)

November 8 at 5:30 P.M. (Mayor William Beardall Senior Center)

December 13 at 5:30 P.M. (Mayor William Beardall Senior Center)

Light Up SODO

December 3

SODO NID Board Meeting

December 13 at 9:00 A.M. (City Hall Veterans Conference Room)

Agenda:

Update on Orange Avenue

Bylaws

Business Development and Workforce Meeting

January 17 (Mayor William Beardall Senior Center)

Meeting time(s) will be announced soon

SODO Crime Statistics Report Presentation

Eddie Rosado

City of Orlando Police Department

District 4 Liaison Officer / Crime Prevention Practitioner

SODO Crime Statistics Report Presentation

ACTIVITY	2012-13	2013-14	2014-15	2015-16	2016-17
Aggravated Assault	3	5	3	7	2
Aggravated Battery	6	5	9	10	8
Armed Robbery	4	3	3	1	2
Armed Sexual Battery	1		1	1	
Arson	2	1	1		
Assault	5	4	9	3	5
Attempted Homicide					1
Attempted Kidnapping			1	1	
Baker Act	41	55	73	49	72
Battery	76	84	70	94	68
Boating Accident	1				
Burglary					25
Bomb Threat and/or Detonation	1	3	2	1	
Bribery		1			
Carjacking	2		1	1	
Child Abuse/Neglect	6	4	4	5	5
City Ordinance Violation	7	23	52	19	9
Commercial Burglary	40	42	72	45	54
Commercial Robbery	4	8	8	6	4
Counterfeit Currency	5	1	6	2	5
Criminal Mischief	51	30	24	32	41
Custody Dispute	1	3	3		
Dealing in Stolen Property	6	1	1		1
Drug Violation	20	38	25	19	13
Elderly Abuse/Neglect		2	1		
Escaped Prisoner	4	5	3	1	
Exposure	1	1	1		1
Extortion		2			
FAA Violation				1	
Florida Traffic Crash Report	526	220	109	86	66
Forged Prescription	1		1		2
Forgery	6	6	5	7	2
Fraud/Fraudulent Docs	58	60	64	68	68
Grand Theft	77	89	86	80	86
Homicide				1	
Identity Theft	6	7	6	7	7
Industrial Accident	1	1			
Information Report	103	82	97	93	98
Kidnapping		1	1		
Lost Property	27	32	39	40	25
Motor Vehicle Theft	20	18	28	28	24
Other Sex Crimes	4	3	4	3	3
Person Robbery	16	5	5	10	7
Petit Theft	190	192	186	167	142
Pickpocket Theft					1
Possession of Controlled Subst					1
Residential Burglary	12	21	15	7	3
Sexual Battery	6	7	2	6	2
Shooting at/within/in struc/veh				1	1
Stalking	10	3	2	7	1
Stolen Boat	1				
Stolen Tag	17	14	21	18	24
Suspicious Device	1				1
Suspicious Incident/Person	30	36	42	41	32
Threats/Harassment	10	13	11	22	7
Throwing Deadly Missile			1	1	
Trespass	6	3	8	6	3
Unattended Death		5	3	3	5
Vehicle Burglary	63	96	59	79	84
Weapons Violation	1	6	3	1	5

?

Crime Prevention Through Environmental Design (CPTED)

Martin Hudson

City of Orlando

Neighborhood Improvement District Manager

Crime Prevention Through Environmental Design (CPTED)

- ▶ CPTED is a group of design principles that development can integrate into a project to help reduce the risk of crime in an area.
- ▶ As part of the Design and Development Guidelines Updates we will be integrating certain CPTED principles into the area's development codes.

Design streets to increase pedestrian and bicycle traffic

- ▶ As part of the SODO Master Plan new complete street concepts are being designed. These new designs will improve the pedestrian and bicycle infrastructure in the SODO area.
- ▶ Late 2018 work will begin on Orange Avenue's Complete Street Project.



Ground Floor Transparency

- ▶ Place windows overlooking sidewalks and parking lots



Use passing vehicular traffic as a surveillance asset

- ▶ Slowing traffic down increase the drivers visual of their surrounds (traffic calming concepts and narrow lane widths)



Landscape Design

- ▶ Create landscape designs that provide surveillance, especially in proximity to designated points of entry and opportunistic points of entry



Lighting Design

- ▶ When creating lighting design, avoid poorly placed lights that create blind-spots for potential observers and miss critical areas
- ▶ Lighting that functions for the car and the pedestrian



?

Orlando's New Solicitation Ordinance

Alexander Karden

Orlando Police Department

Police Legal Advisor

Changes to Soliciting

- ▶ New ordinance is in EFFECT
- ▶ First Amendment Issue
 - ▶ Asking for money is treated like asking for directions or the time by courts
- ▶ Reason for change
 - ▶ Court decisions foreclosed enforcement of many parts of previous ordinance
 - ▶ New ordinance is narrower, but enforceable and provides clearer guidance



Ordinances 43.86 & 43.87 Repealed

Outright prohibitions on soliciting lifted:

- ▶ Downtown (i.e. “Blue boxes” policy),
- ▶ Parks, and
- ▶ Nighttime



Soliciting - Amended Ordinance 51.06

- ▶ Elements of Captive Audience Prohibition:
 - ▶ “Captive Audience”,
 - ▶ If impractical for unwilling viewer or listener to avoid exposure
 - ▶ Active solicitation, AND
 - ▶ Solicitor has received a clear refusal

Captive Audience	Not Captive Audience
Passengers on public transit	People having lunch outdoors at park
People entering health care facility	People on public sidewalks that can avoid offensive content by looking away
Residents whose homes are targeted by protesters	Funeral goers where protest did not interrupt funeral and only the tops of signs could be seen from funeral

Soliciting - Example

A couple sitting at a Church Street restaurant patio has ordered and received drinks. Joe, who was walking down Church Street, pauses in front of the couple and says “I’m hungry, please help.” The couple tells Joe, “We don’t care. Leave us alone.” Joe replies, “You can’t even spare a dollar?”

- ▶ Has Joe violated the new soliciting ordinance, 51.06?
 - ▶ **Yes.** Here Joe has continued to actively solicit a captive audience after a clear refusal.
- ▶ What if Joe just walked past the couple with a sign that read, “Spare a dollar?”
 - ▶ **No.** Unless Joe actively placed the sign into the couple’s line of sight so that they could not avoid it, the couple would not be “captive” to Joe’s message the second time.

Soliciting - Other Changes

Changed

- ▶ ATMs
 - ▶ Prior: prohibited w/in 15 ft of ATM
 - ▶ Now: prohibited if person solicited is operating ATM
- ▶ Parking areas/structures where blocking entry or exit
- ▶ Private Property
 - ▶ Prior: prohibited w/o consent of owner
 - ▶ Trespass may still apply
 - ▶ Now: prohibited if “No Solicitors” sign

Unchanged

- ▶ False Statement 51.06(3)
- ▶ Threatening behavior 51.06(2)(b) & (c)



Soliciting - Other Tools

- ▶ City Ordinances
 - ▶ Disorderly Conduct 43.06
 - ▶ (k): distributing material to or receiving any object from person in MV stopped for traffic control device
 - ▶ Purpose: for safety of solicitor, vehicle occupants, and pedestrians
 - ▶ (j) and (i): remaining OR congregating with others in manner that blocks traffic on street or sidewalk after warning
 - ▶ State Misdemeanors 43.30
- ▶ State Statutes
 - ▶ Traffic Laws (not arrestable offenses)
 - ▶ Fla. Stat. s. 316.130(5): prohibits standing in roadway “for the purpose of soliciting a ride, employment, or business from the occupant of any vehicle”
 - ▶ Fla. Stat. s. 316.130(3): prohibits walking along roadway where sidewalks are provided and not required by other circumstances

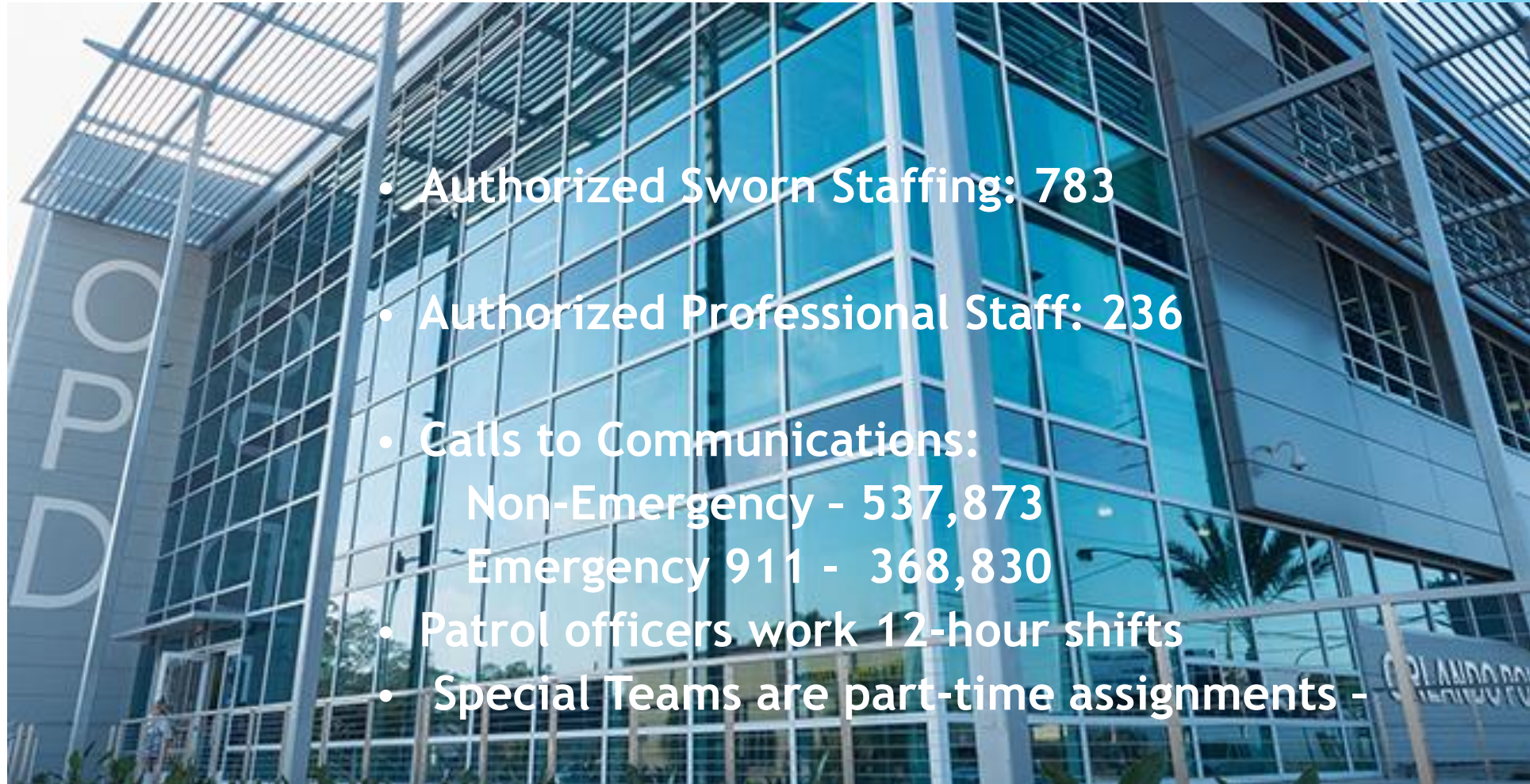


?

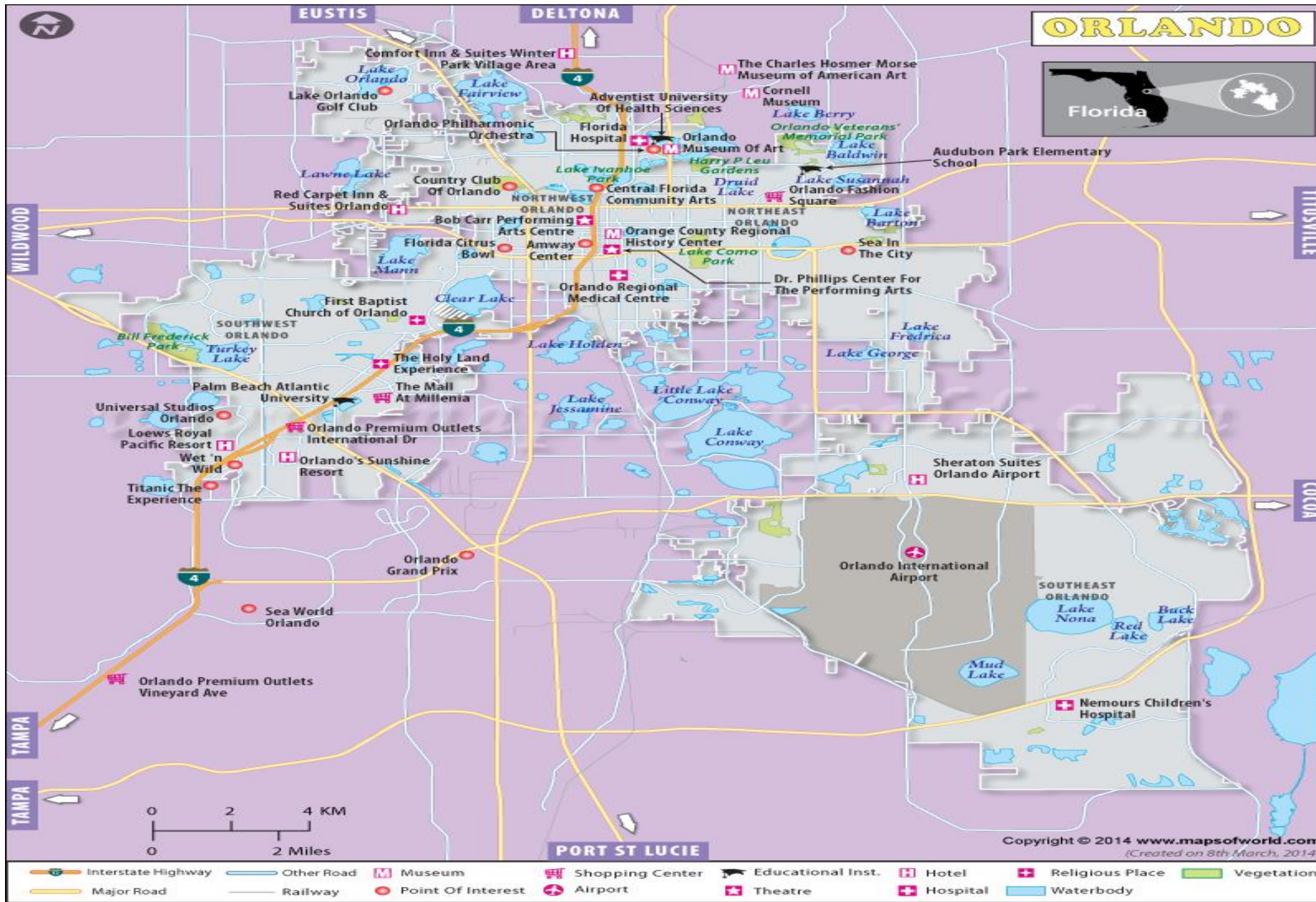
Police Substation

Deputy Chief Orlando Rolón
Orlando Police Department

Captain Jose R. Velez
Orlando Police Department
East Patrol Division
Crisis Negotiation Team



- Authorized Sworn Staffing: 783
- Authorized Professional Staff: 236
- Calls to Communications:
 - Non-Emergency - 537,873
 - Emergency 911 - 368,830
- Patrol officers work 12-hour shifts
- Special Teams are part-time assignments -



Police Substations

- What is a sub-station?
- Police coverage in the south downtown area?
- Benefits of substations for OPD and the community?



➤ What is a sub-station?

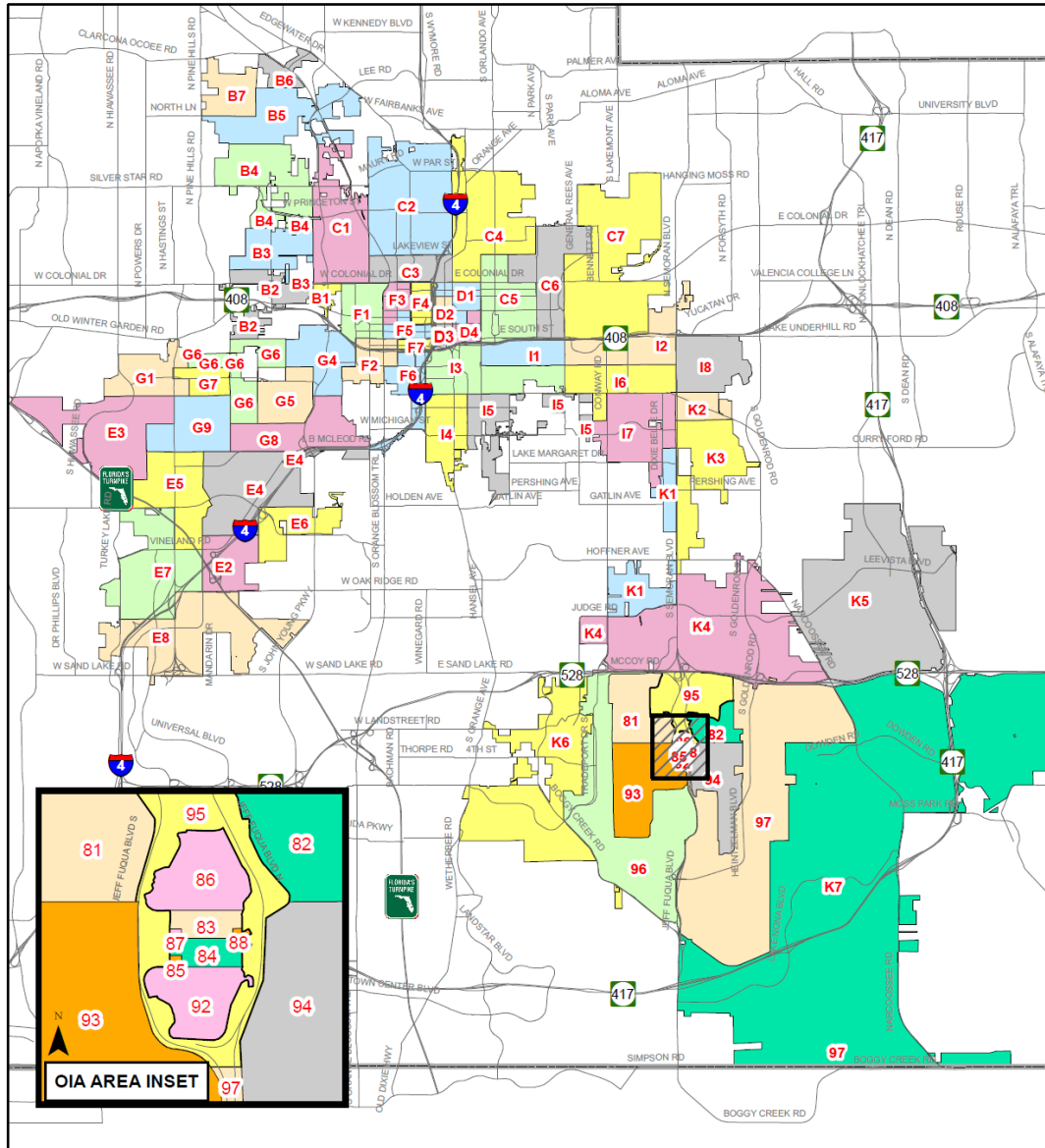


East Patrol Division has 2 substations.

Substations are not staffed 24 hours.

A place for officers to safely complete reports and conduct interviews.

Police coverage in the south downtown area?



For police purposes the City is divided in districts. Each district regardless of criminal activity has at least one officer assigned to it 24/7.

In cases of emergencies or high call volumes, officers from other districts are dispatch to assist.

Benefits of substations for OPD and the community?



Higher visibility of law enforcement in the community.

Increase positive citizen contacts.

Place for the community to meet with police personnel and elected officials.



Questions?



#OrlandoUnited



Police Substation

Andy Gardiner

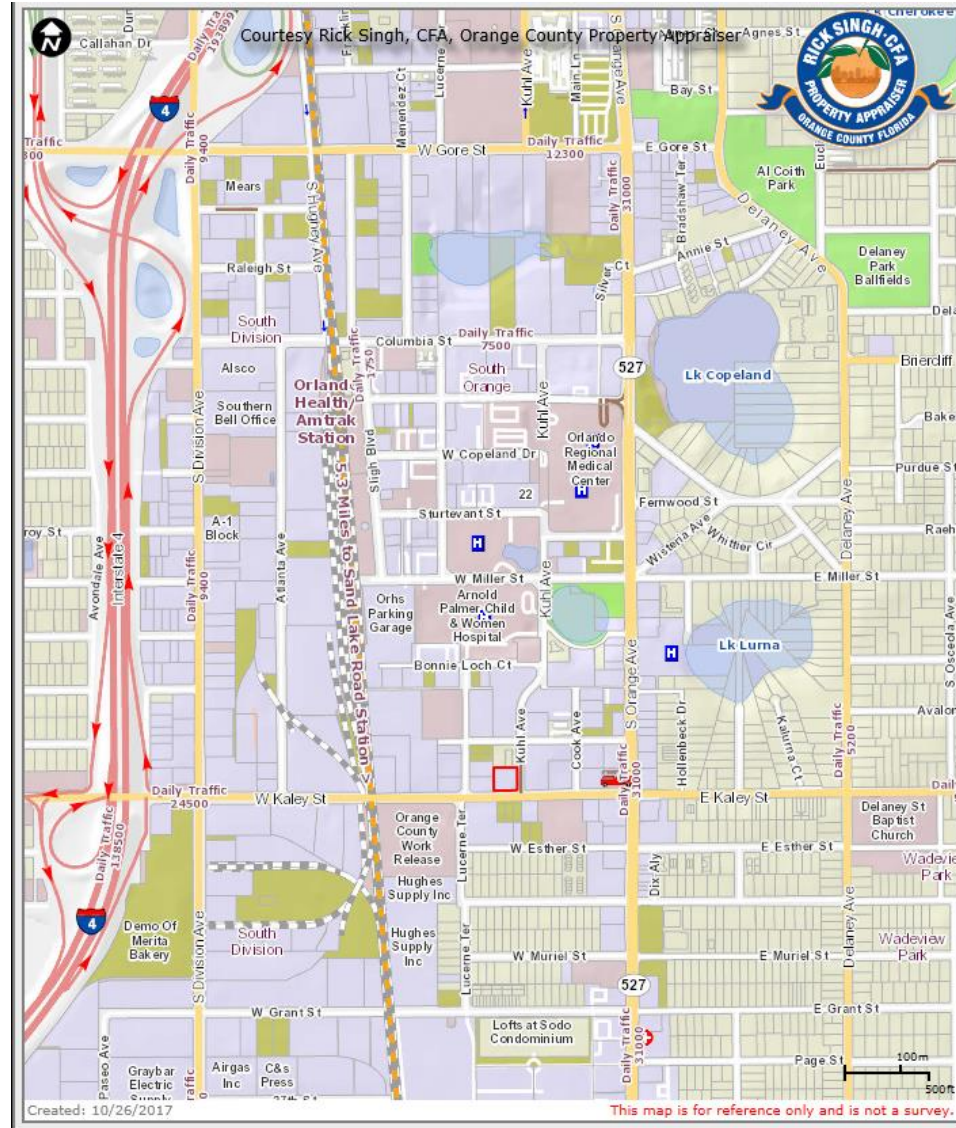
Senior Vice President, External Affairs & Community Relations

Orlando Health

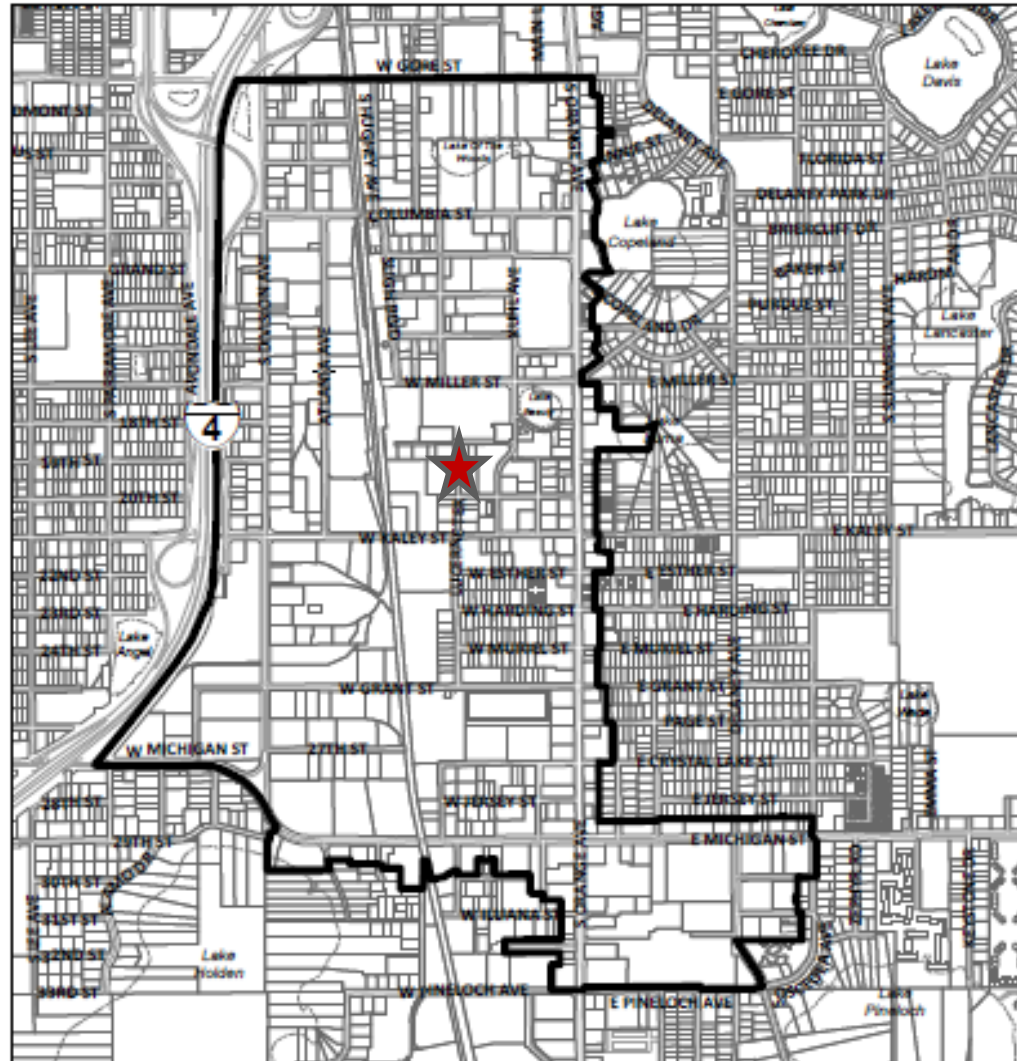
Orlando Police Department Substation

ORLANDO
HEALTH®

Orlando Police Department Substation



Orlando Police Department Substation



Orlando Police Department Substation



1,757 square feet
10 parking spaces
Northwest Corner View Kuhl & Kaley

