

Redistricting

CITY OF ORLANDO

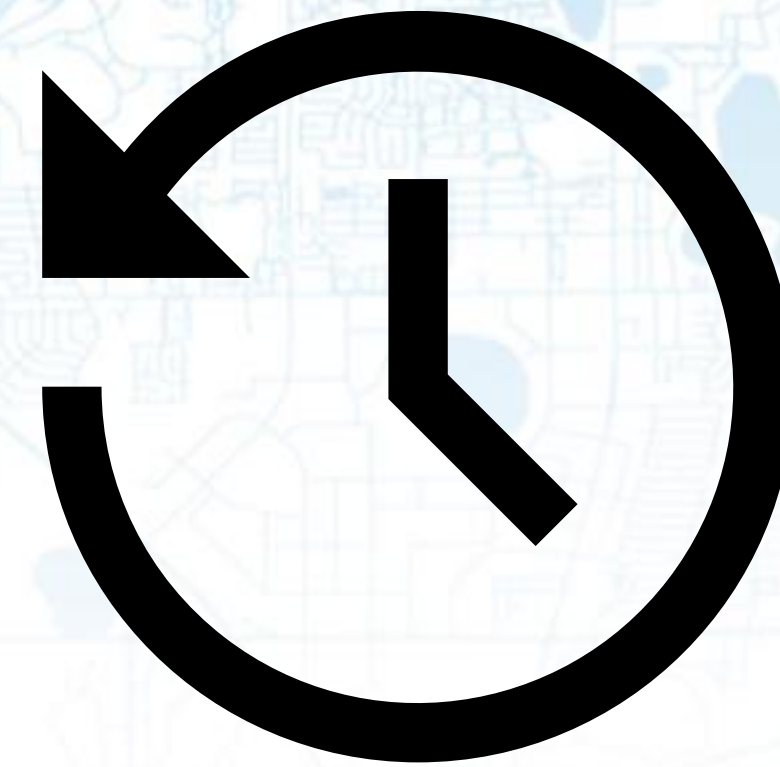
2022





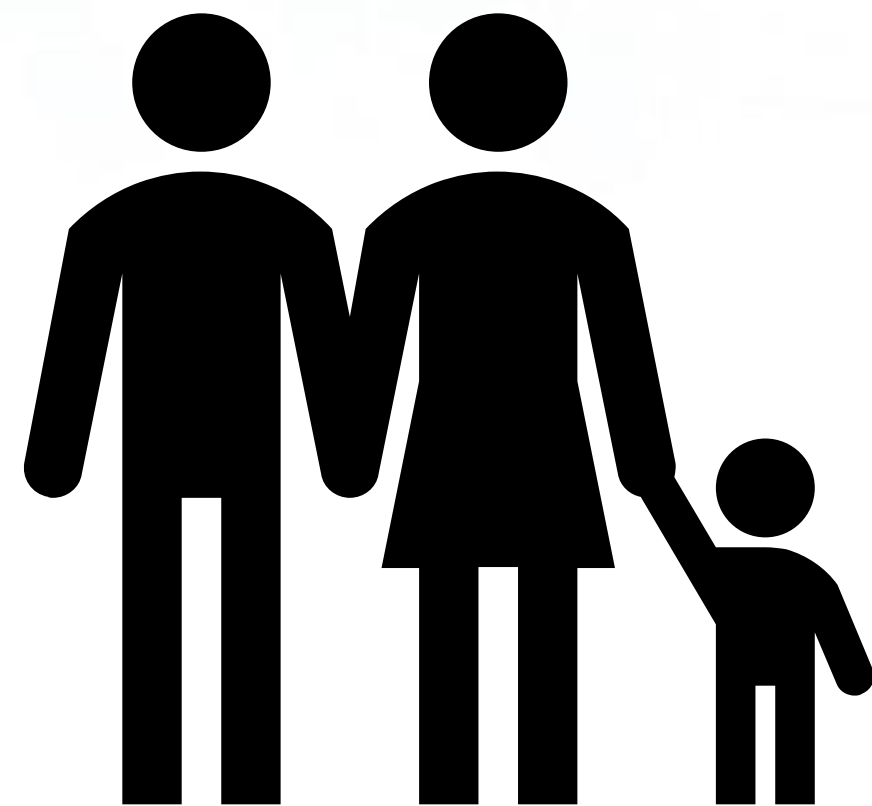
Census 2020

Latest Citywide and
per-district numbers



History

Trends in Orlando's
population and density

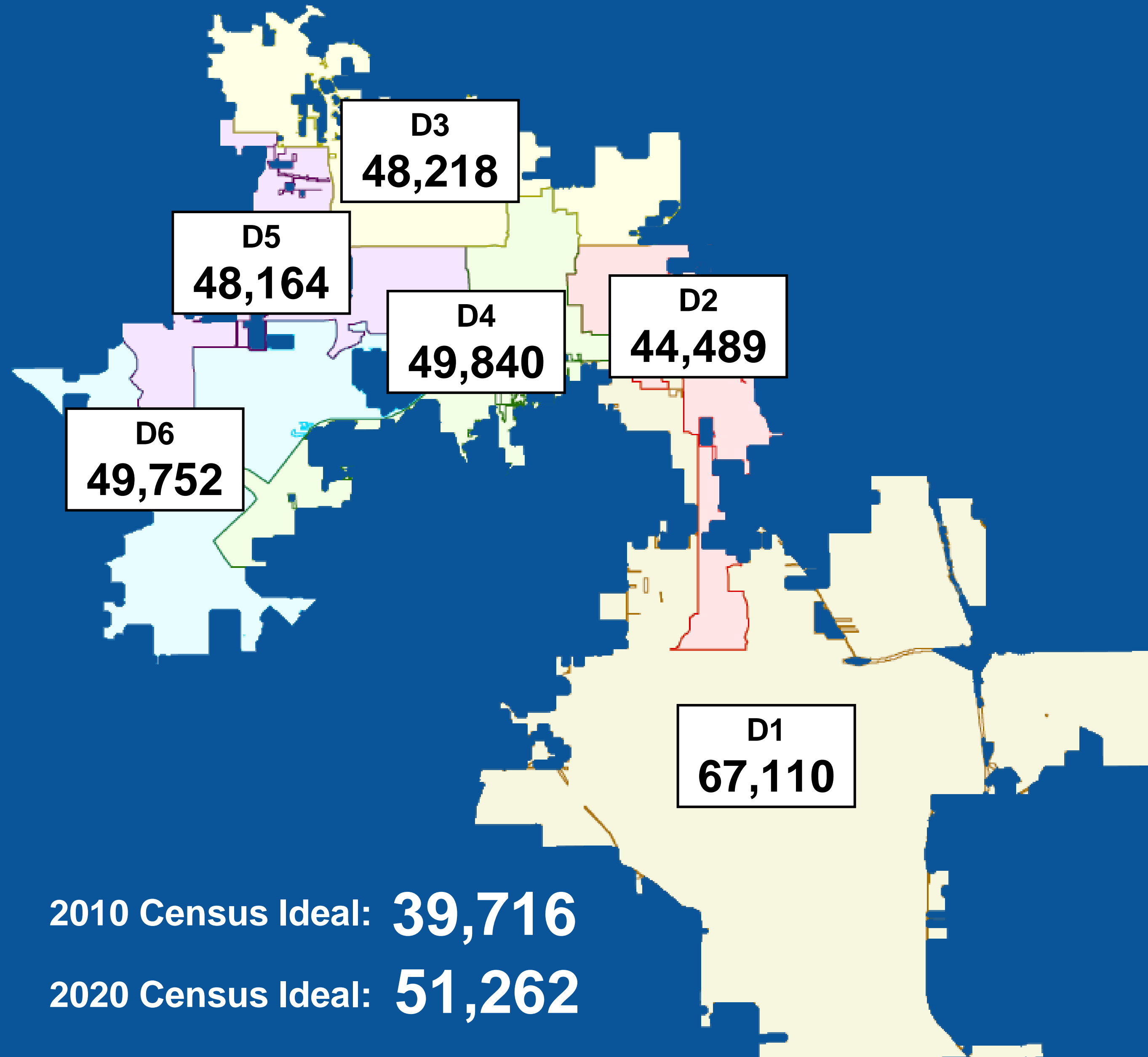


Demographics

Overall Results of 2020 Census

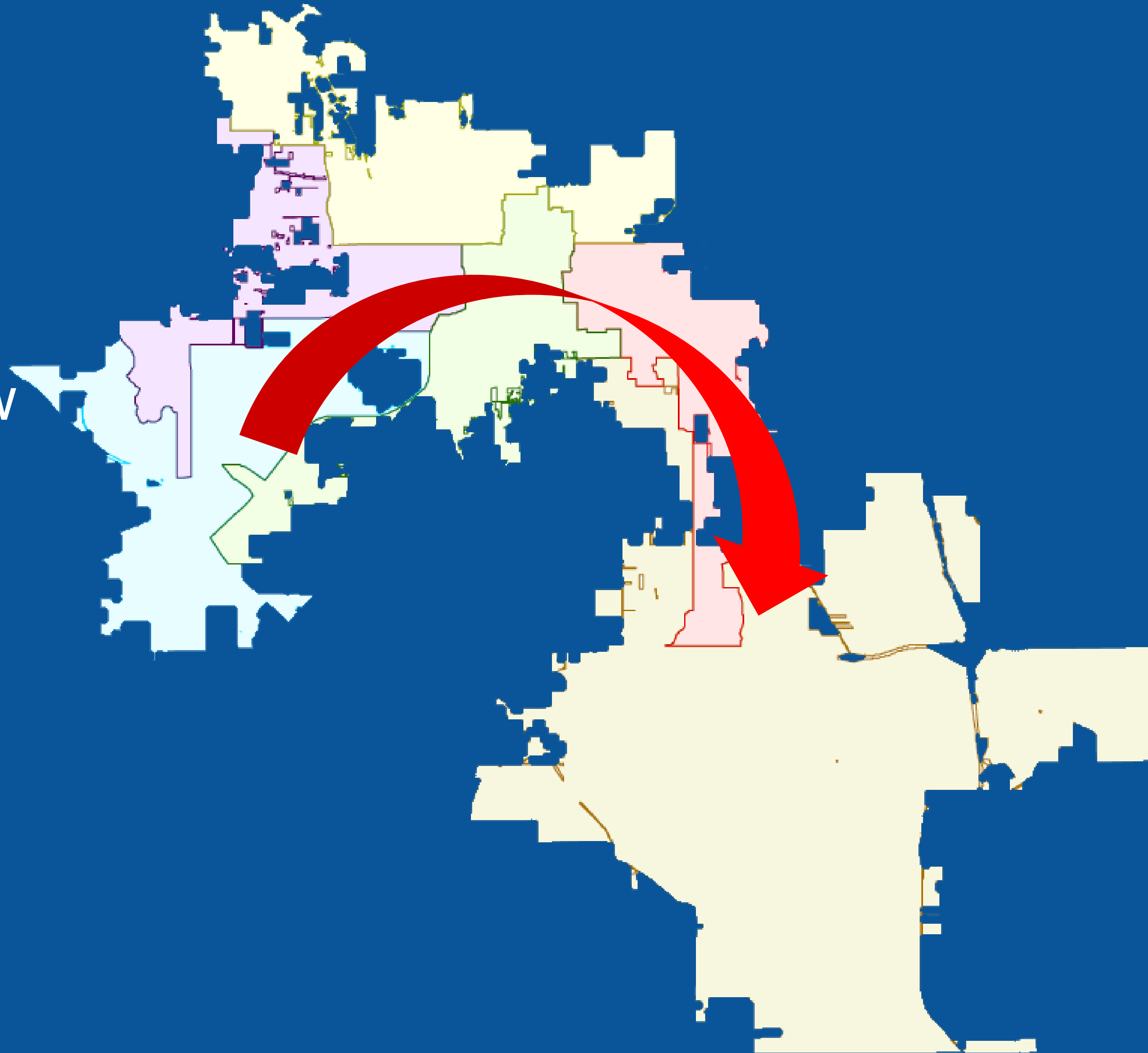


Status of the City of Orlando



- Current (2012-2022) district boundaries pictured at left
- **2010 Census:**
238,300 population ÷ 6 districts
= ideal district **just under 40,000**
- **2020 Census:**
307,573 population ÷ 6 districts
= ideal district **just over 51,000**

Because District 1's gross population has grown the most between 2010 and 2020, the new district boundaries are going to need to shift, generally, in its direction.

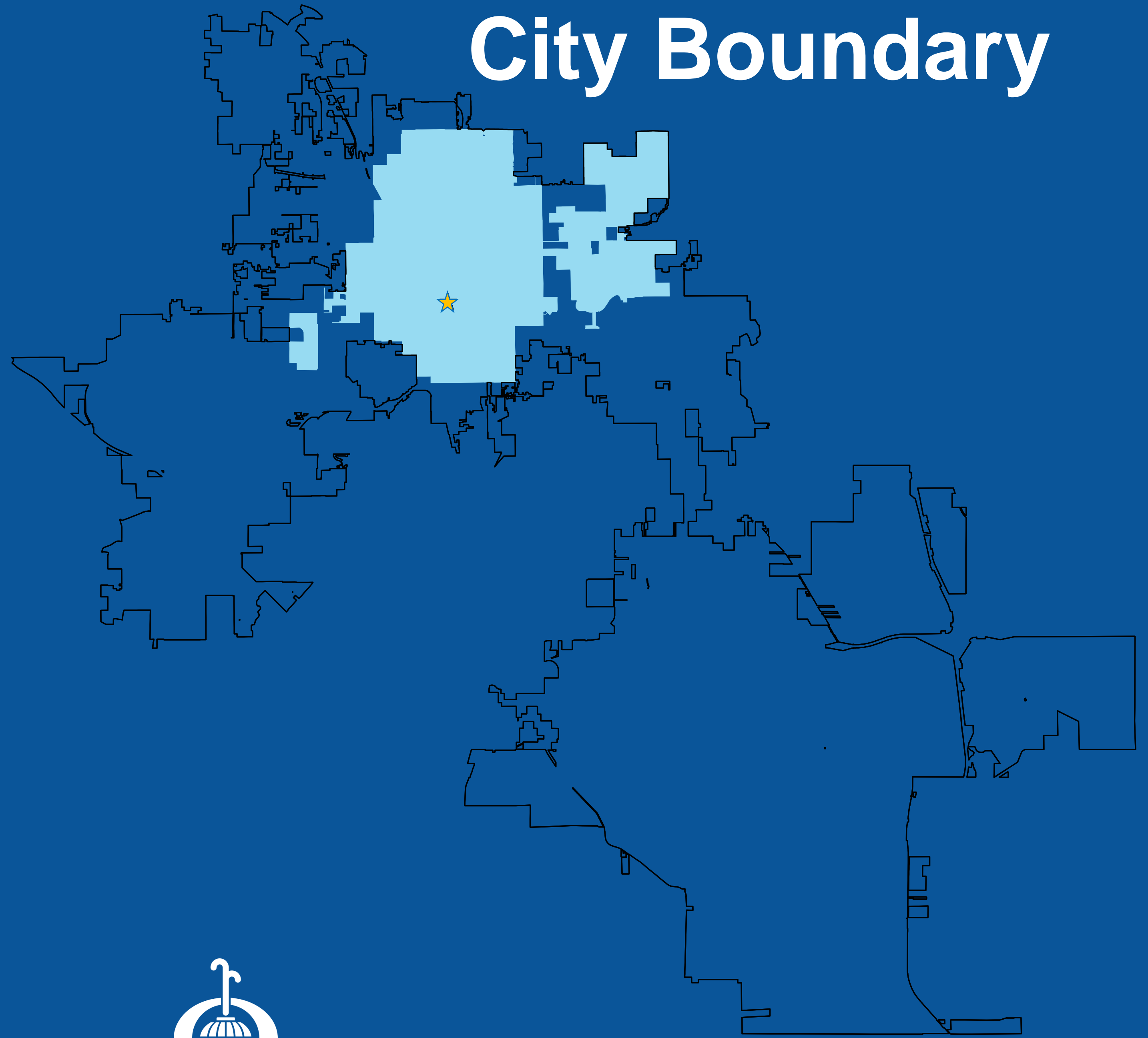


Historical Census Data



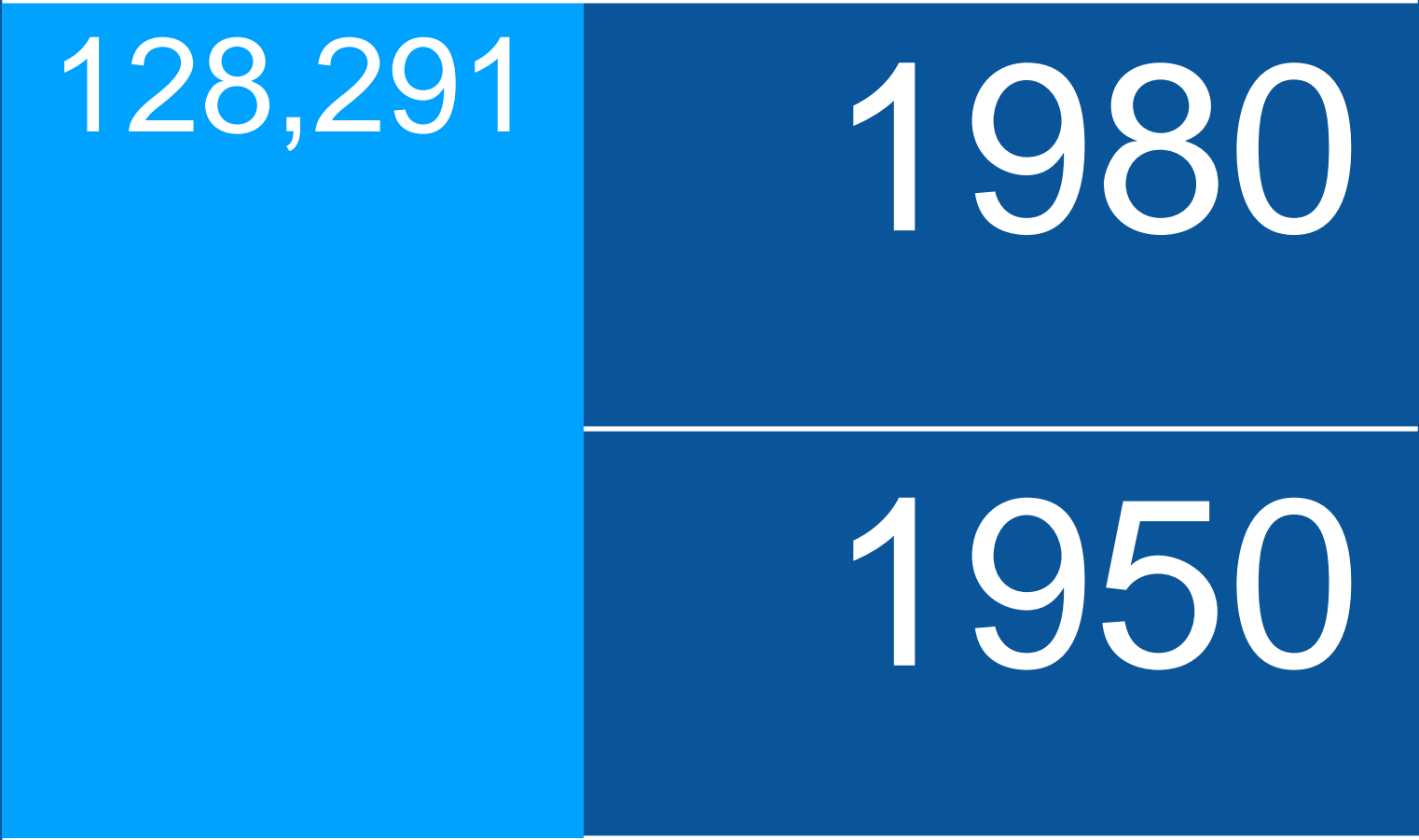
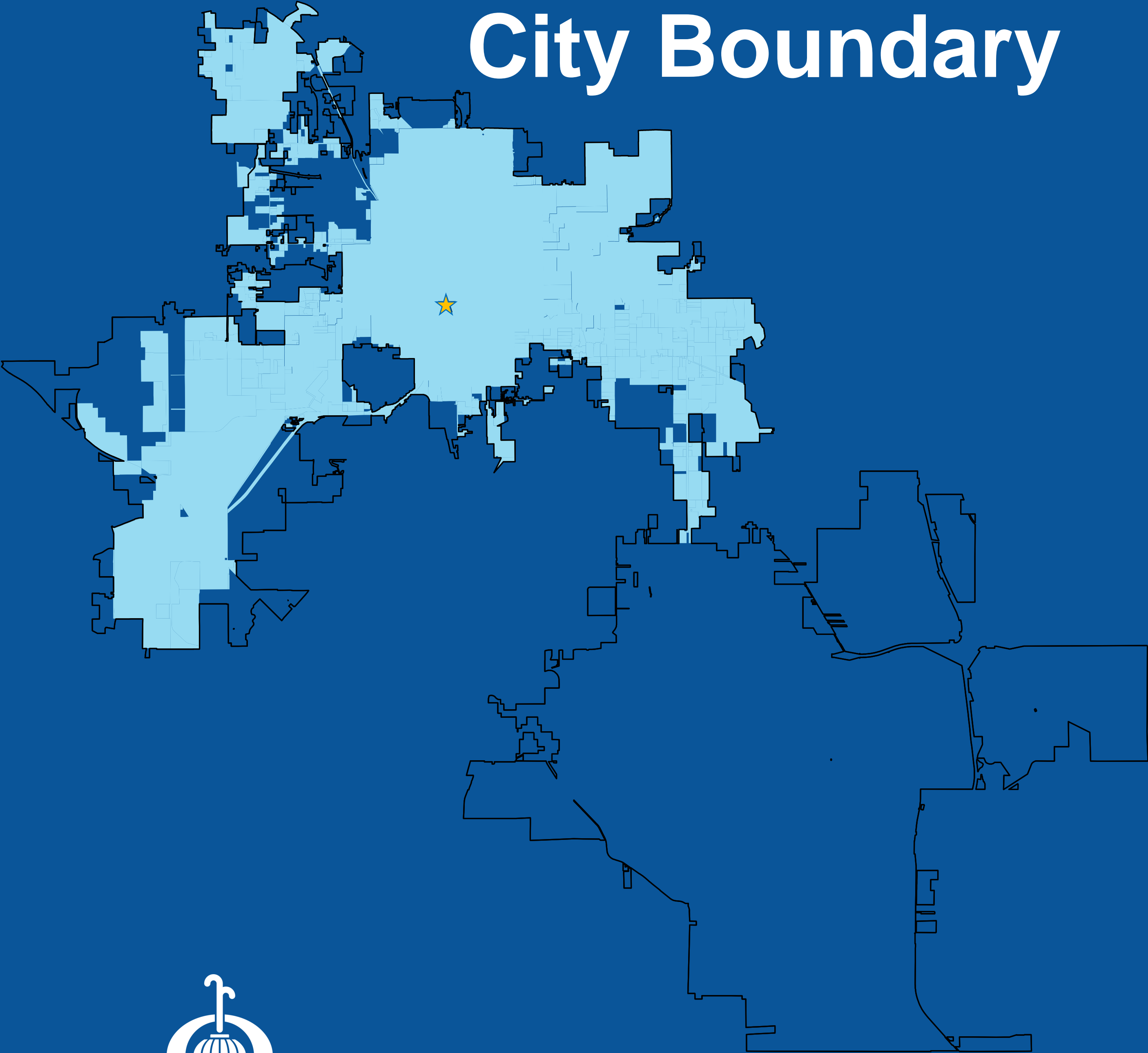
Population

City Boundary



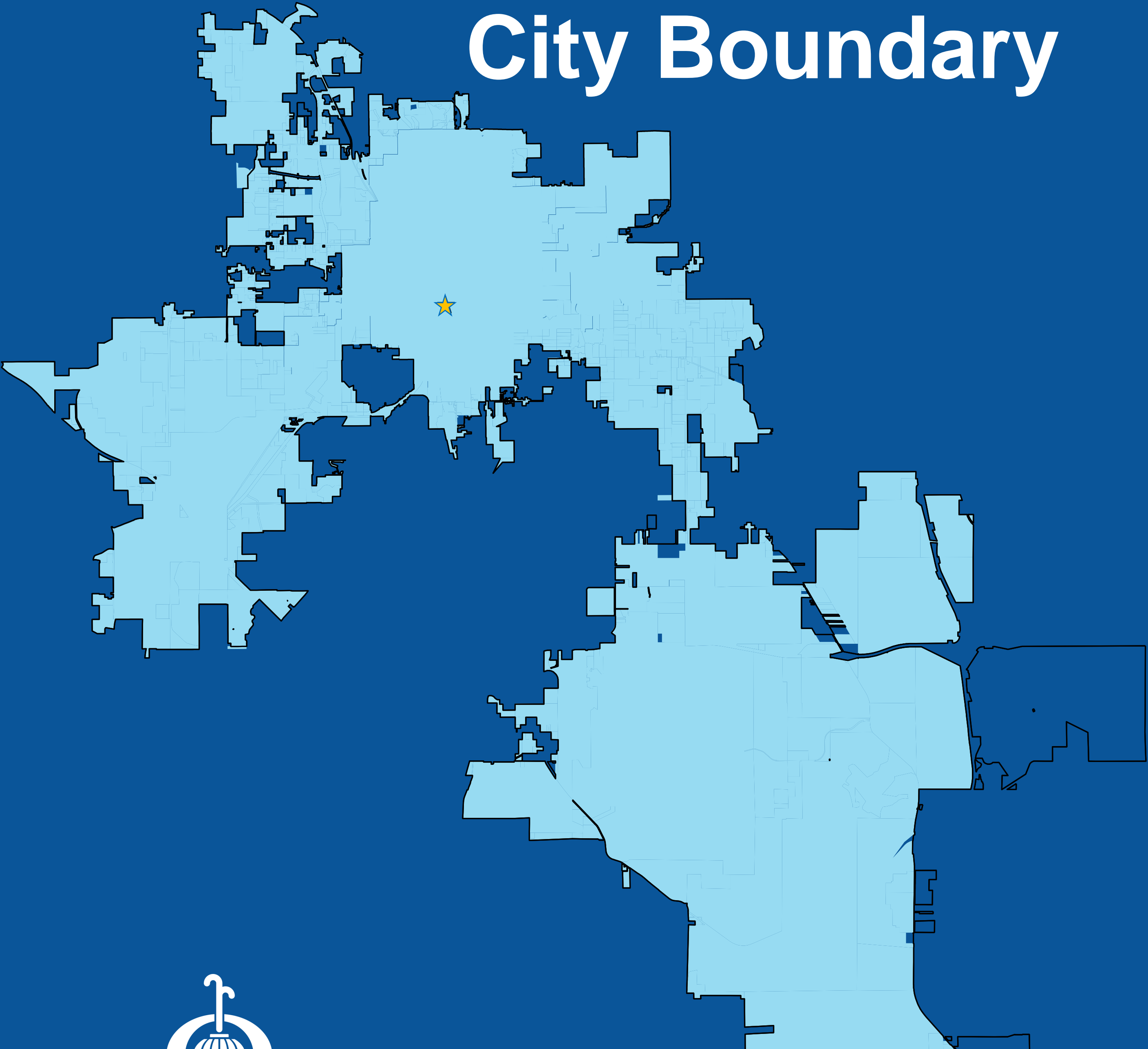
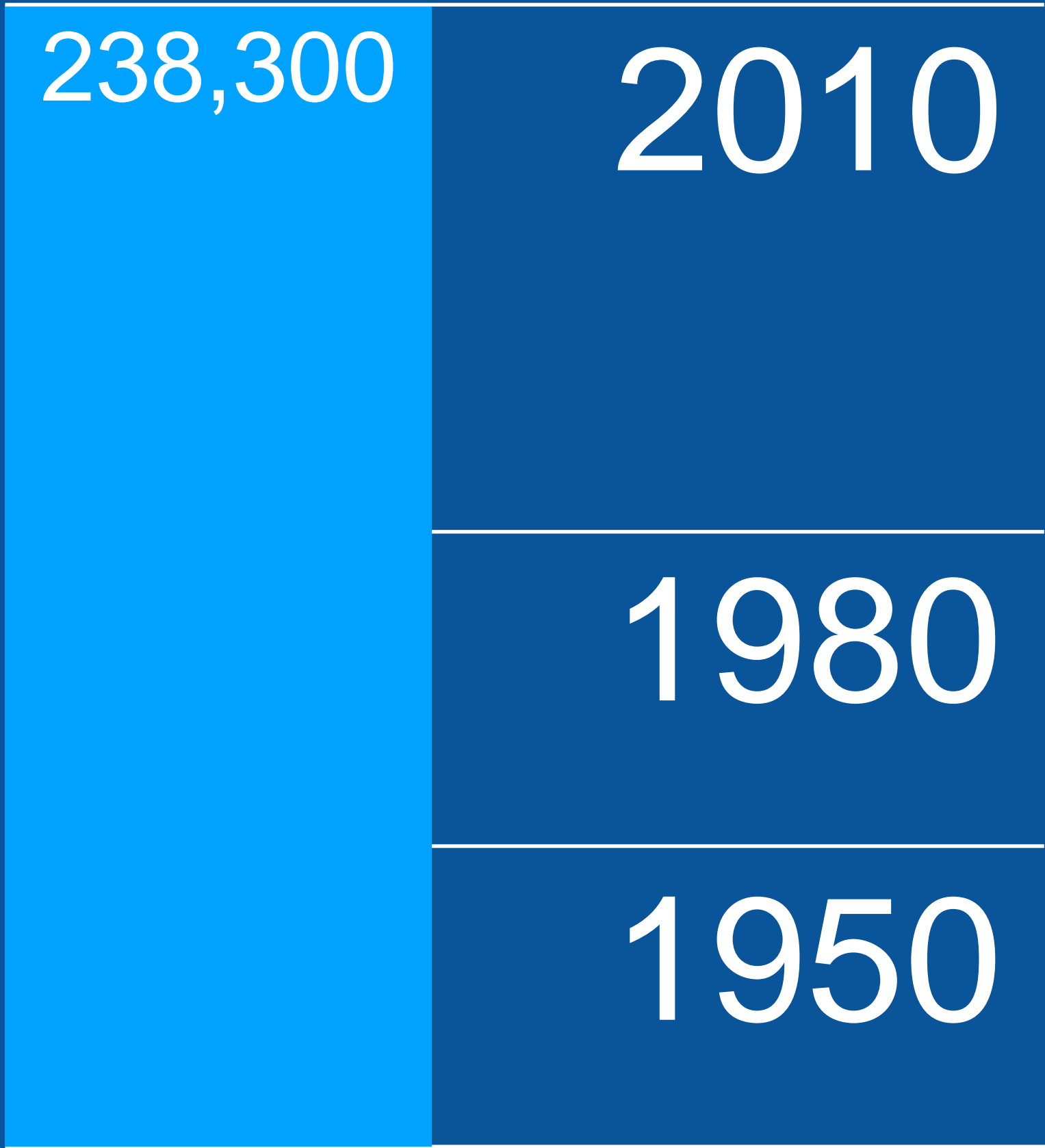
Population

City Boundary



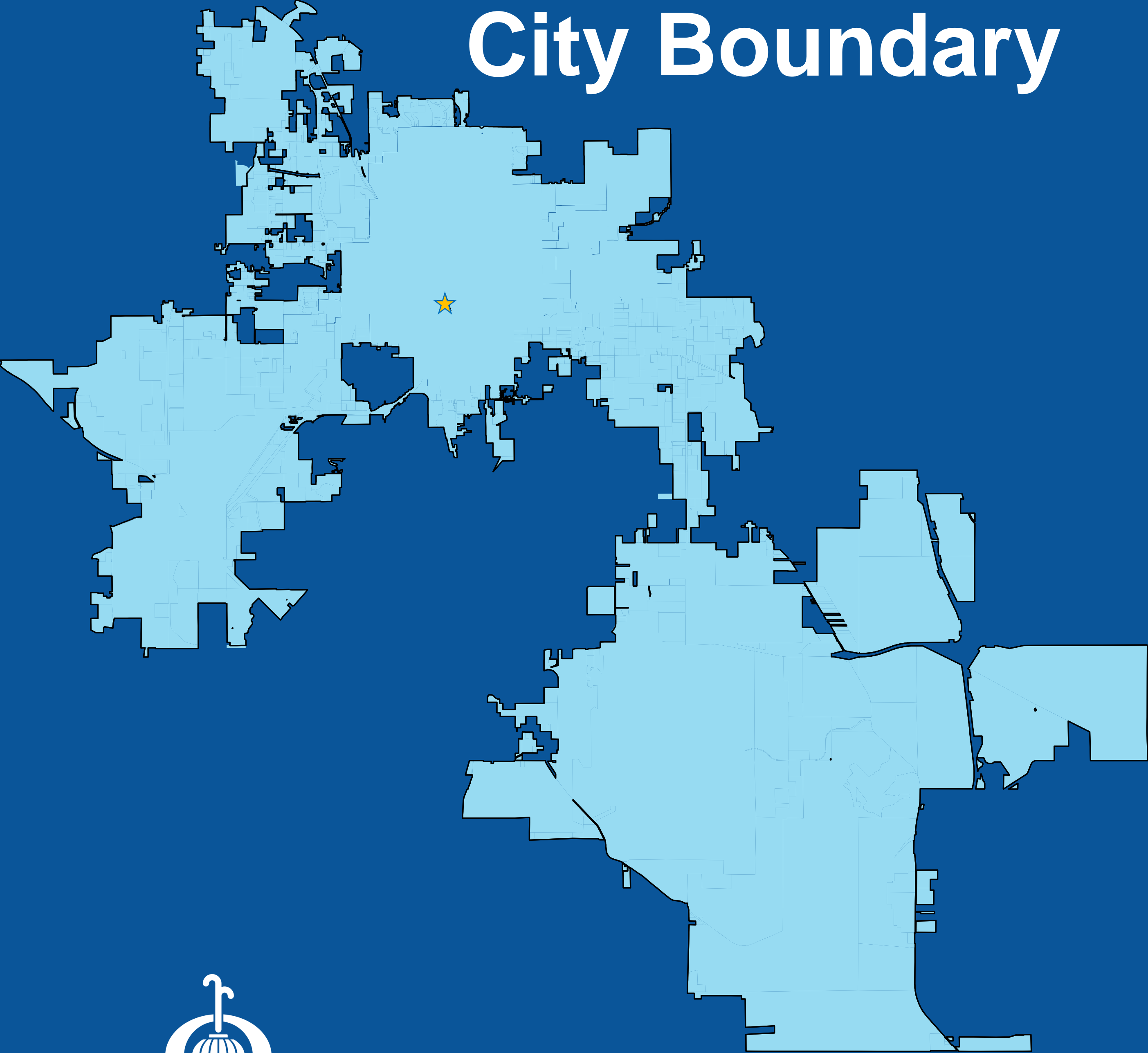
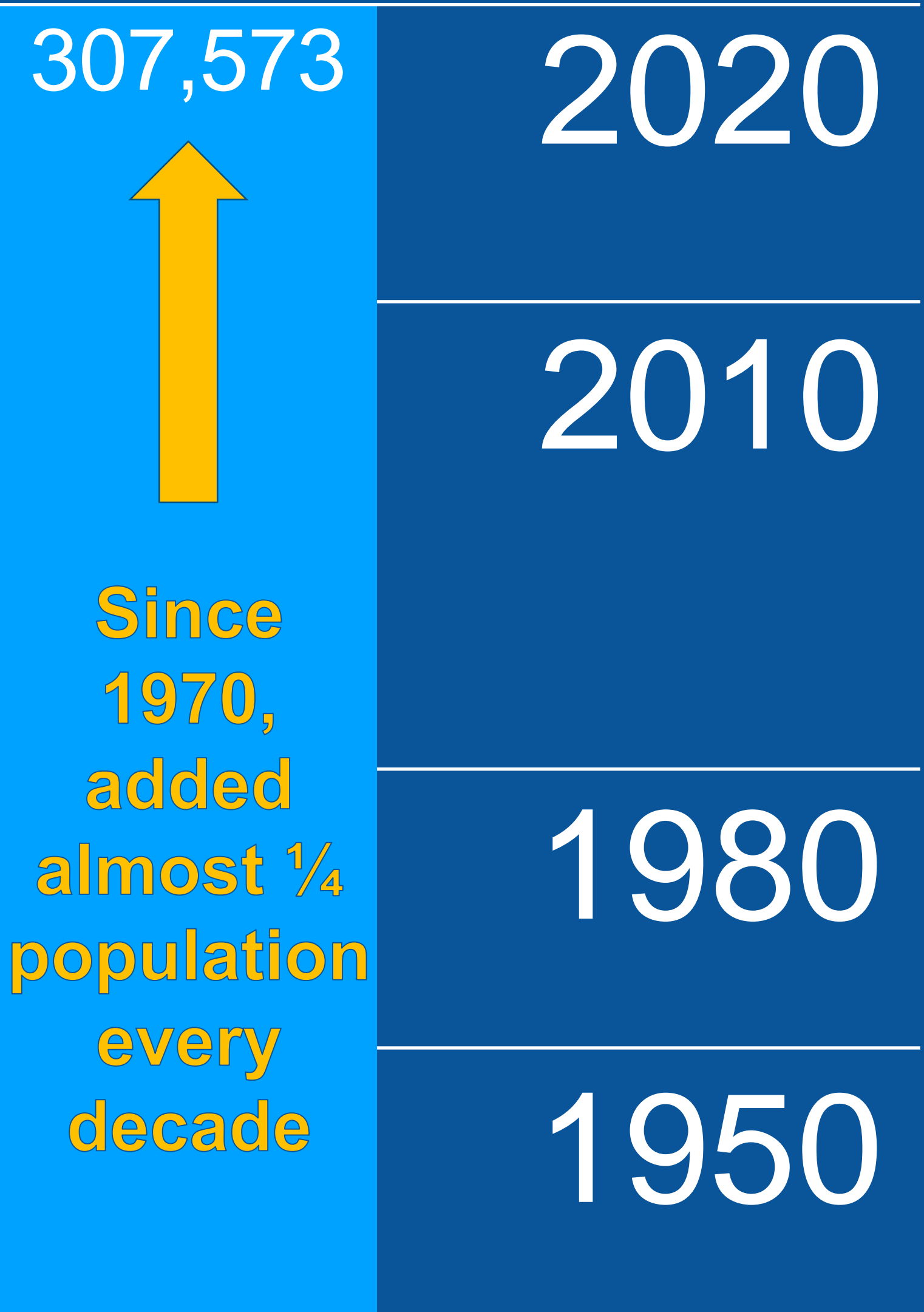
Population

City Boundary



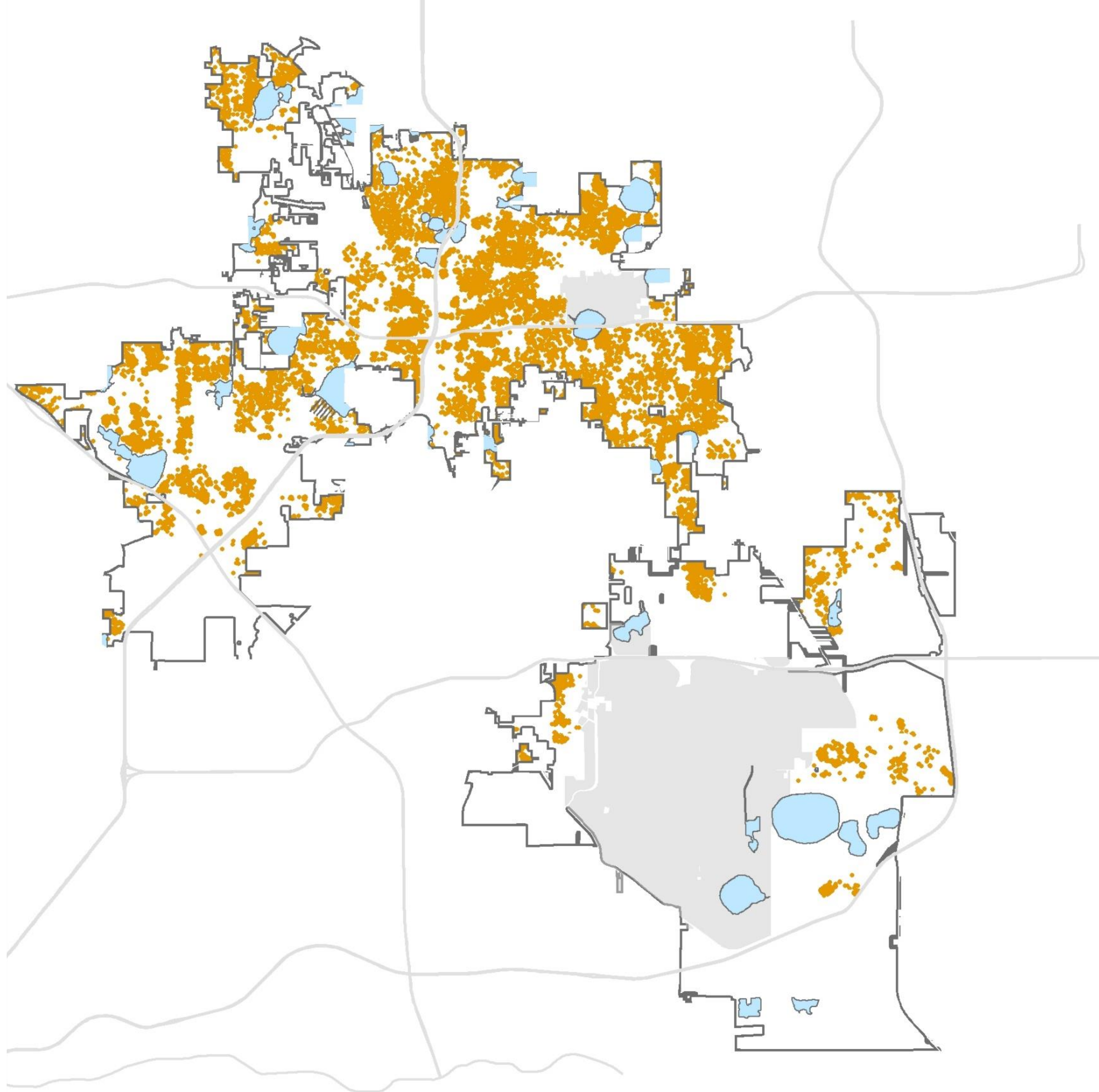
Population

City Boundary



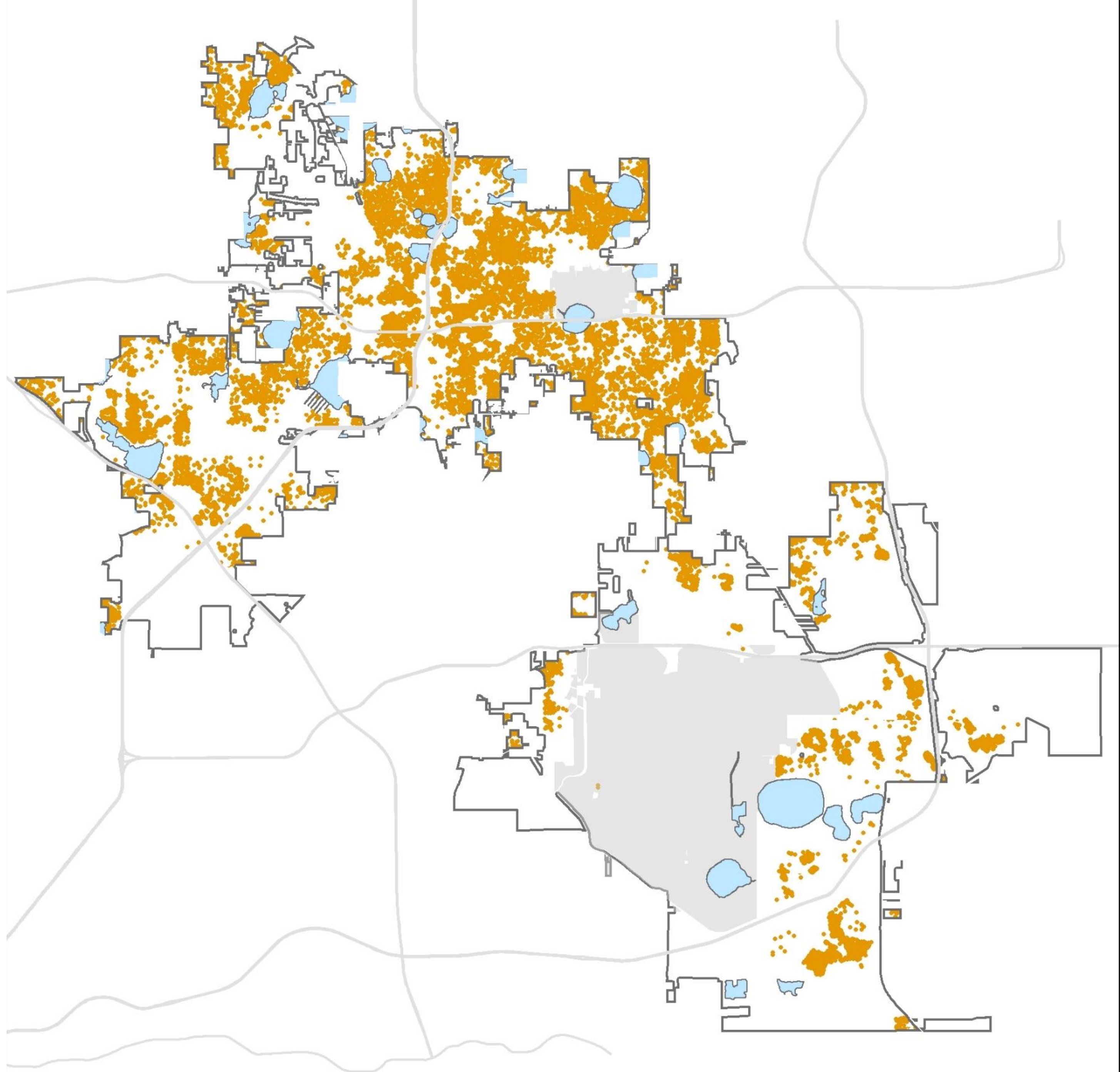
Population Density 2010

2 people per acre
Range: 0.005 to 300



Population Density 2020

2 people per acre
Range: 0.005 to 300



Demographics



Citywide Demographics

2011

Population	Redistricting	2020	% Change
Total	238,916	307,573	↑ 29.1%
White	137,576	122,998	↓ -10.6%
Black	66,966	76,387	↑ 14.1%
Asian	8,980	15,590	↑ 73.6%
Other*	25,394	92,598	↑ 264.6%

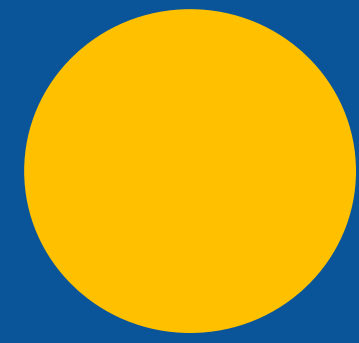
Hispanic or Latino Ethnicity

25%

33%



*Includes those who marked two, three, or more races; those who marked some other race; and those who wrote in Hispanic/Latino as a race



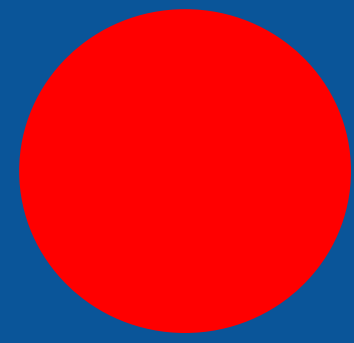
District 1 Demographics

2011

Population	Redistricting	2020	% Change
Total	38,325	67,110	↑ 75.1%
White	26,375	27,882	↑ 5.7%
Black	4,318	7,372	↑ 70.7%
Asian	2,580	5,573	↑ 116.0%
Other*	5,052	26,283	↑ 420.2%
<i>Hispanic or Latino Ethnicity</i>	41%	46%	



*Includes those who marked two, three, or more races; those who marked some other race; and those who wrote in Hispanic/Latino as a race



District 2 Demographics

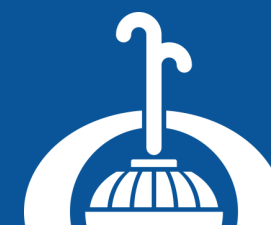
2011

Population	Redistricting	2020	% Change
Total	38,848	44,489	↑ 14.5%
White	26,504	16,429	↓ -38.0%
Black	4,456	5,163	↑ 15.9%
Asian	785	1,121	↑ 42.8%
Other*	7,103	21,776	↑ 206.6%

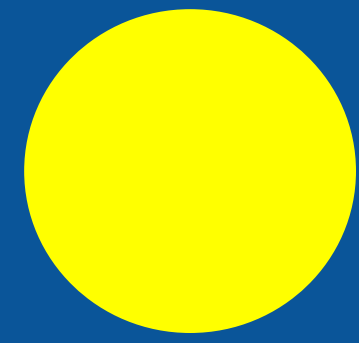
Hispanic or Latino Ethnicity

52%

60%



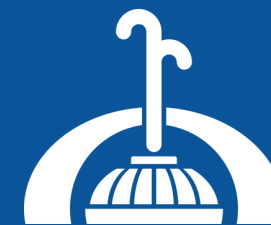
*Includes those who marked two, three, or more races; those who marked some other race; and those who wrote in Hispanic/Latino as a race



District 3 Demographics

2011

Population	Redistricting	2020	% Change
Total	39,455	48,218	↑ 22.2%
White	26,390	27,924	↑ 5.8%
Black	9,824	11,509	↑ 17.2%
Asian	1,203	2,280	↑ 89.5%
Other*	2,038	6,505	↑ 219.2%
<i>Hispanic or Latino Ethnicity</i>	10%	15%	



*Includes those who marked two, three, or more races; those who marked some other race; and those who wrote in Hispanic/Latino as a race



District 4 Demographics

2011

Population	Redistricting	2020	% Change
Total	41,693	49,840	↑ 20.0%
White	31,484	28,674	↓ -8.9%
Black	5,403	7,210	↑ 33.4%
Asian	1,315	2,361	↑ 79.5%
Other*	3,491	11,595	↑ 232.1%

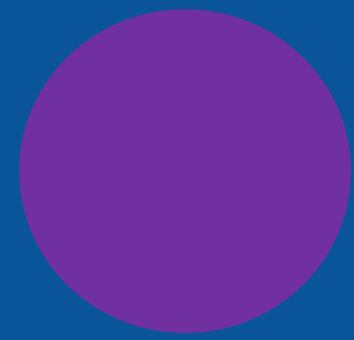
Hispanic or Latino Ethnicity

18%

25%



*Includes those who marked two, three, or more races; those who marked some other race; and those who wrote in Hispanic/Latino as a race



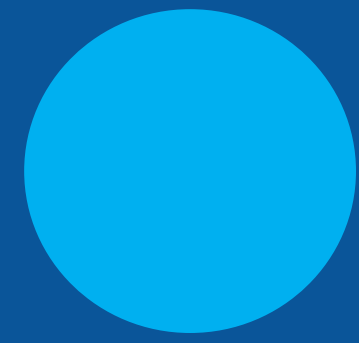
District 5 Demographics

2011

Population	Redistricting	2020	% Change
Total	39,652	48,164	↑ 21.5%
White	11,152	9,625	↓ -13.7%
Black	23,829	25,660	↑ 7.7%
Asian	1,011	1,433	↑ 41.7%
Other*	3,660	11,446	↑ 212.7%
<i>Hispanic or Latino Ethnicity</i>	15%	22%	



*Includes those who marked two, three, or more races; those who marked some other race; and those who wrote in Hispanic/Latino as a race



District 6 Demographics

2011

Population	Redistricting	2020	% Change
Total	40,943	49,752	↑ 19.8%
White	15,671	12,464	↓ -20.5%
Black	19,136	19,473	↑ 1.8%
Asian	2,086	2,822	↑ 35.3%
Other*	4,050	14,993	↑ 270.2%

Hispanic or Latino Ethnicity

17%

26%



*Includes those who marked two, three, or more races; those who marked some other race; and those who wrote in Hispanic/Latino as a race

Notable Points, 2010-2020

- Hispanic or Latino residents increased citywide. The greatest proportional growth was in Districts 2 and 6 (at 9 and 8 percentage points, respectively).
- White residents declined in all districts except 1 and 3; those each saw a rise of about 5.7%.
- Black residents increased in all districts. District 5 began the decade with the greatest gross number and increased 7%.
- District 4's changes most closely reflected the citywide trends, followed by Districts 5 and 3.