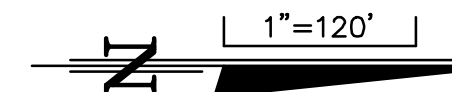


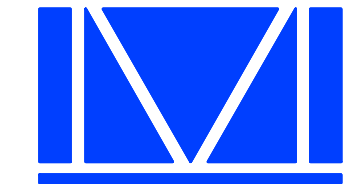
DONALD W. MCINTOSH ASSOCIATES, INC. RESERVES THE EXCLUSIVE COPYRIGHT AND PROPERTY RIGHTS TO THIS DRAWING WHICH MAY NOT BE REPRODUCED, CHANGED, OR COPIED IN ANY FORM OR MANNER, NOR CAN IT BE ASSIGNED TO ANY PARTY WITHOUT DONALD W. MCINTOSH ASSOCIATES, INC.'S WRITTEN CONSENT.

GENERAL NOTES:

1. THE SCALE OF THIS DRAWING MAY HAVE CHANGED DUE TO REPRODUCTION.



NOT FOR CONSTRUCTION (06/17/24)



McINTOSH ASSOCIATES
an LJA company

1950 SUMMIT PARK DRIVE, SUITE 600
ORLANDO, FL 32810 407.844.4068

Seals

DATE: _____

SPECIFIC PARCEL MASTER PLAN

**VISTA PARK
PHASE 4 AND PASSAIC PARKWAY**

CITY OF ORLANDO

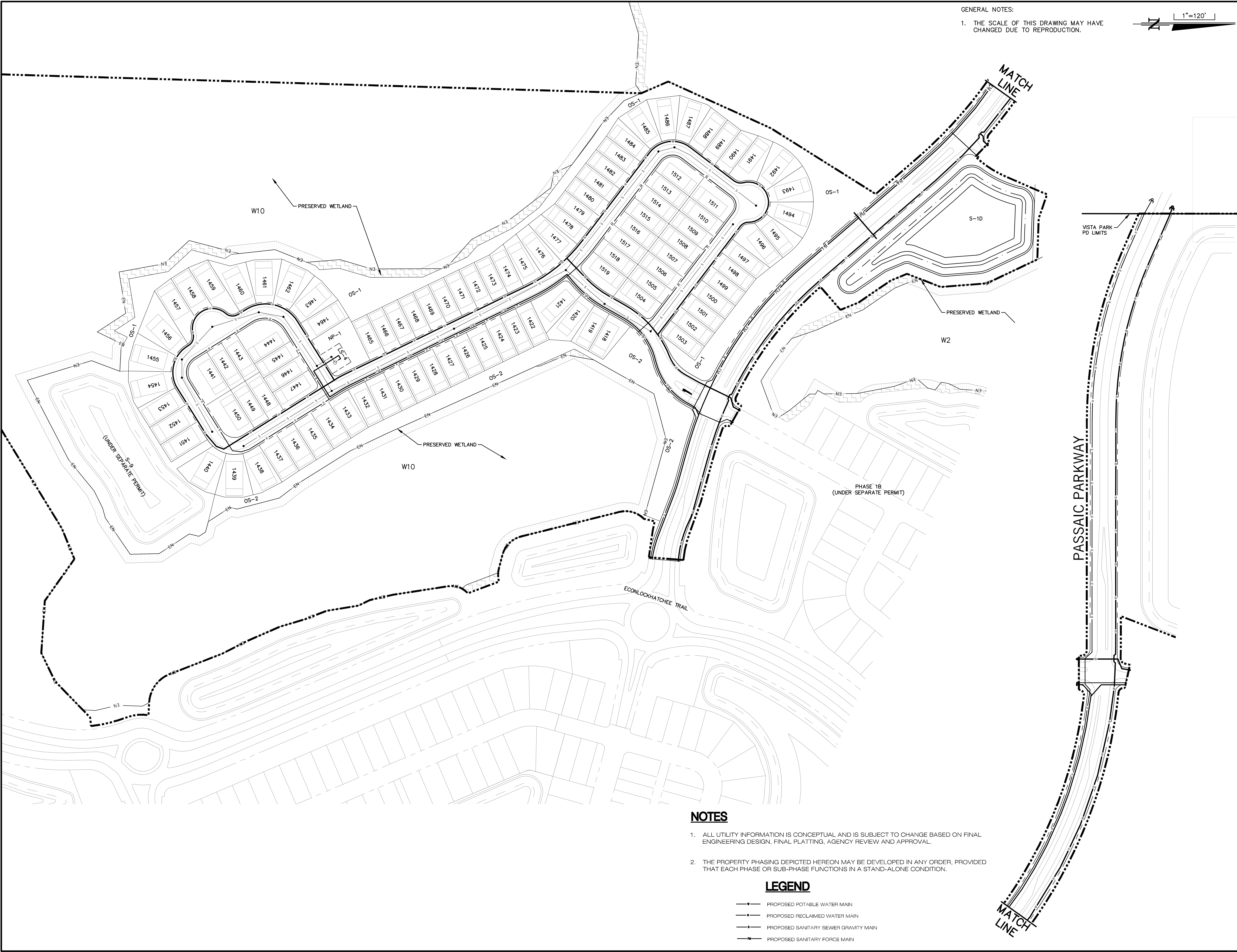
DOCUMENT CHANGES

Description	Date

Issue Description	
Issue Date	6/18/24
Project No	19088
Drawn/Designed	DSW / DSW
Checked By	DT
Drawing Title	

**WATER, SEWER &
RECLAIMED
MASTER PLAN**

Sheet Number
5
5 OF 6



NOTES

1. ALL UTILITY INFORMATION IS CONCEPTUAL AND IS SUBJECT TO CHANGE BASED ON FINAL ENGINEERING DESIGN, FINAL PLATTING, AGENCY REVIEW AND APPROVAL.
2. THE PROPERTY PHASING DEPICTED HEREON MAY BE DEVELOPED IN ANY ORDER, PROVIDED THAT EACH PHASE OR SUB-PHASE FUNCTIONS IN A STAND-ALONE CONDITION.

LEGEND

- PROPOSED POTABLE WATER MAIN
- PROPOSED RECLAIMED WATER MAIN
- PROPOSED SANITARY SEWER GRAVITY MAIN
- PROPOSED SANITARY FORCE MAIN