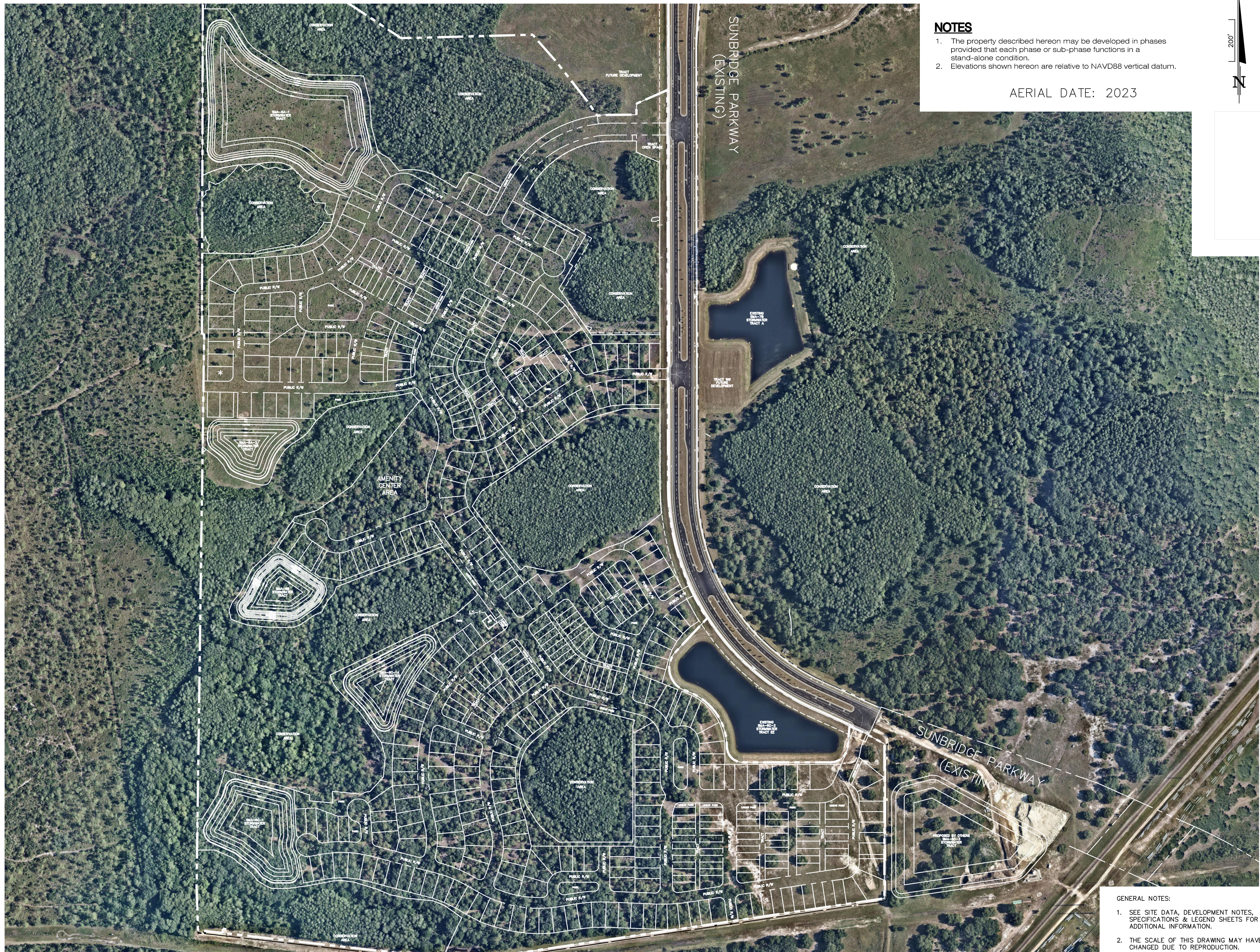


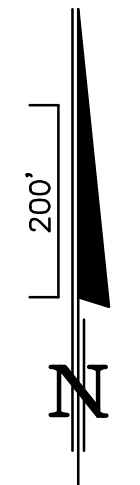
DONALD W. MCINTOSH ASSOCIATES, INC. RESERVES THE EXCLUSIVE COPYRIGHT AND PROPERTY RIGHTS TO THIS DRAWING WHICH MAY NOT BE REPRODUCED, CHANGED, OR COPIED IN ANY FORM OR MANNER, NOR CAN IT BE ASSIGNED TO ANY PARTY WITHOUT DONALD W. MCINTOSH ASSOCIATES, INC.'S WRITTEN CONSENT.



NOTES

1. The property described herein may be developed in phases provided that each phase or sub-phase functions in a stand-alone condition.
2. Elevations shown herein are relative to NAVD88 vertical datum.

AERIAL DATE: 2023



McINTOSH ASSOCIATES
an **LJA** company
1950 SUMMIT PARK DRIVE, SUITE 600
ORLANDO, FL 32810 407.844.4068

Seals

DATE: _____

MASTER PLAN / PRELIMINARY PLAT
SUNBRIDGE N-6
 CITY OF ORLANDO, FLORIDA

DOCUMENT CHANGES	
Description	Date

Issue Description	
Issue Date	10/17/2024
Project No	24546
Drawn/Designed	EOL / JAF
Checked By	MCS
Drawing Title	

AERIAL

Sheet Number

- GENERAL NOTES:
1. SEE SITE DATA, DEVELOPMENT NOTES, SPECIFICATIONS & LEGEND SHEETS FOR ADDITIONAL INFORMATION.
 2. THE SCALE OF THIS DRAWING MAY HAVE CHANGED DUE TO REPRODUCTION.