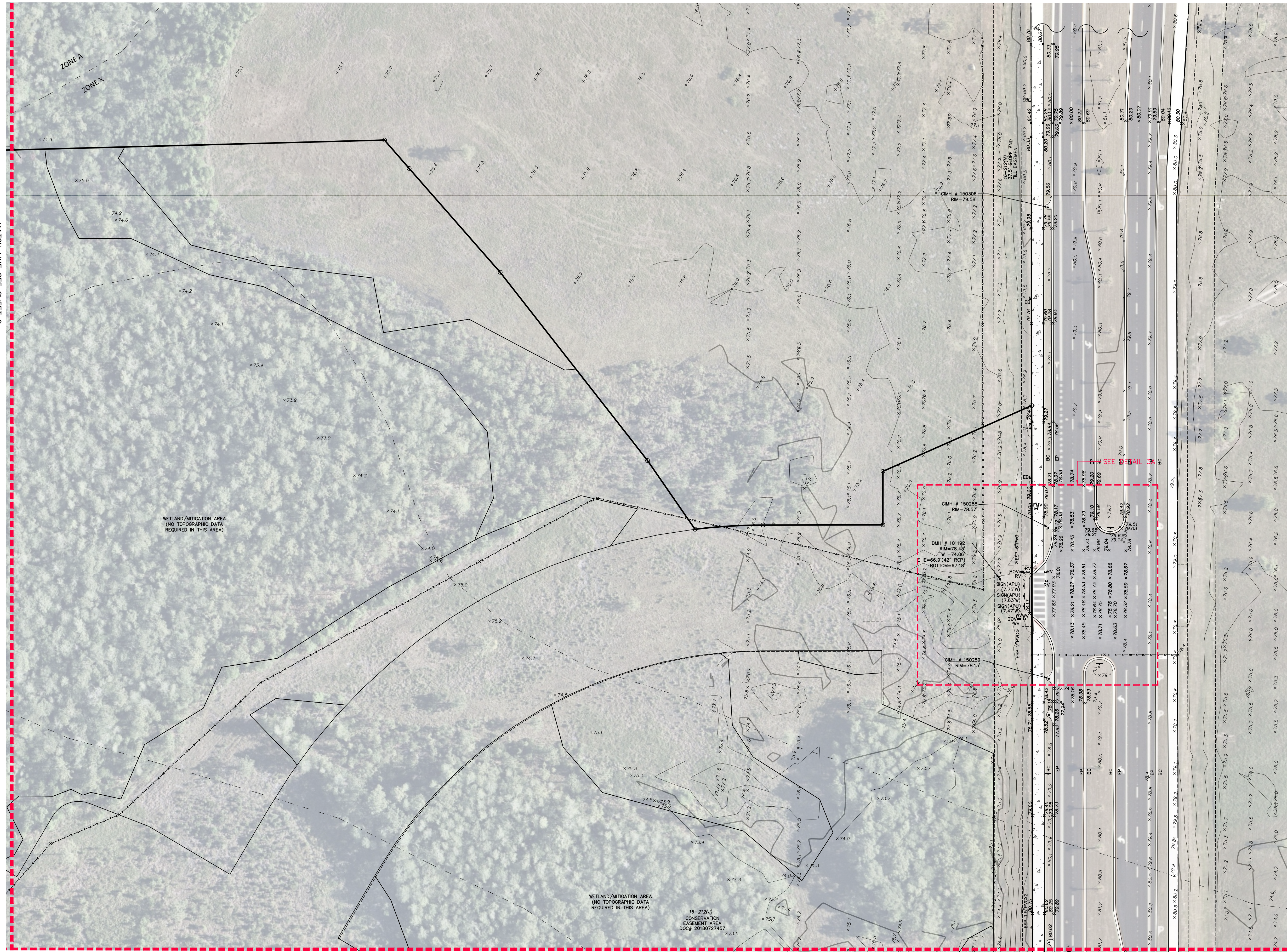
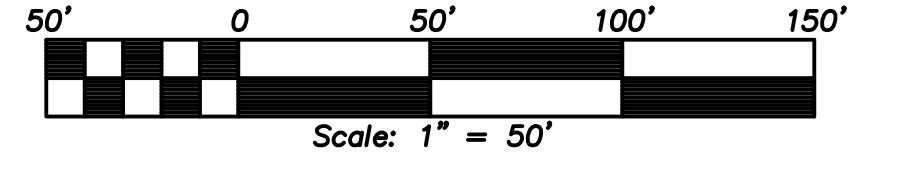


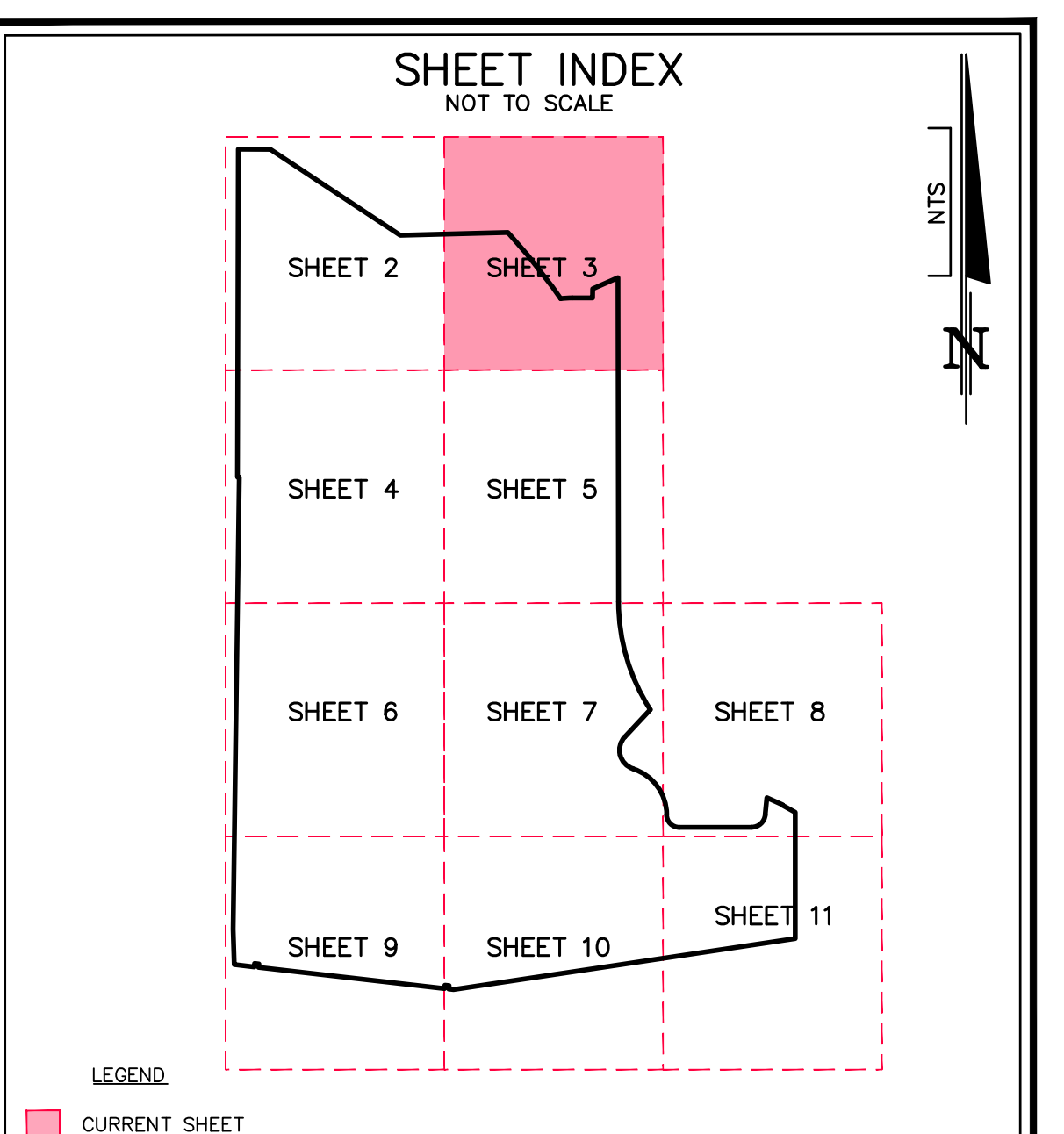
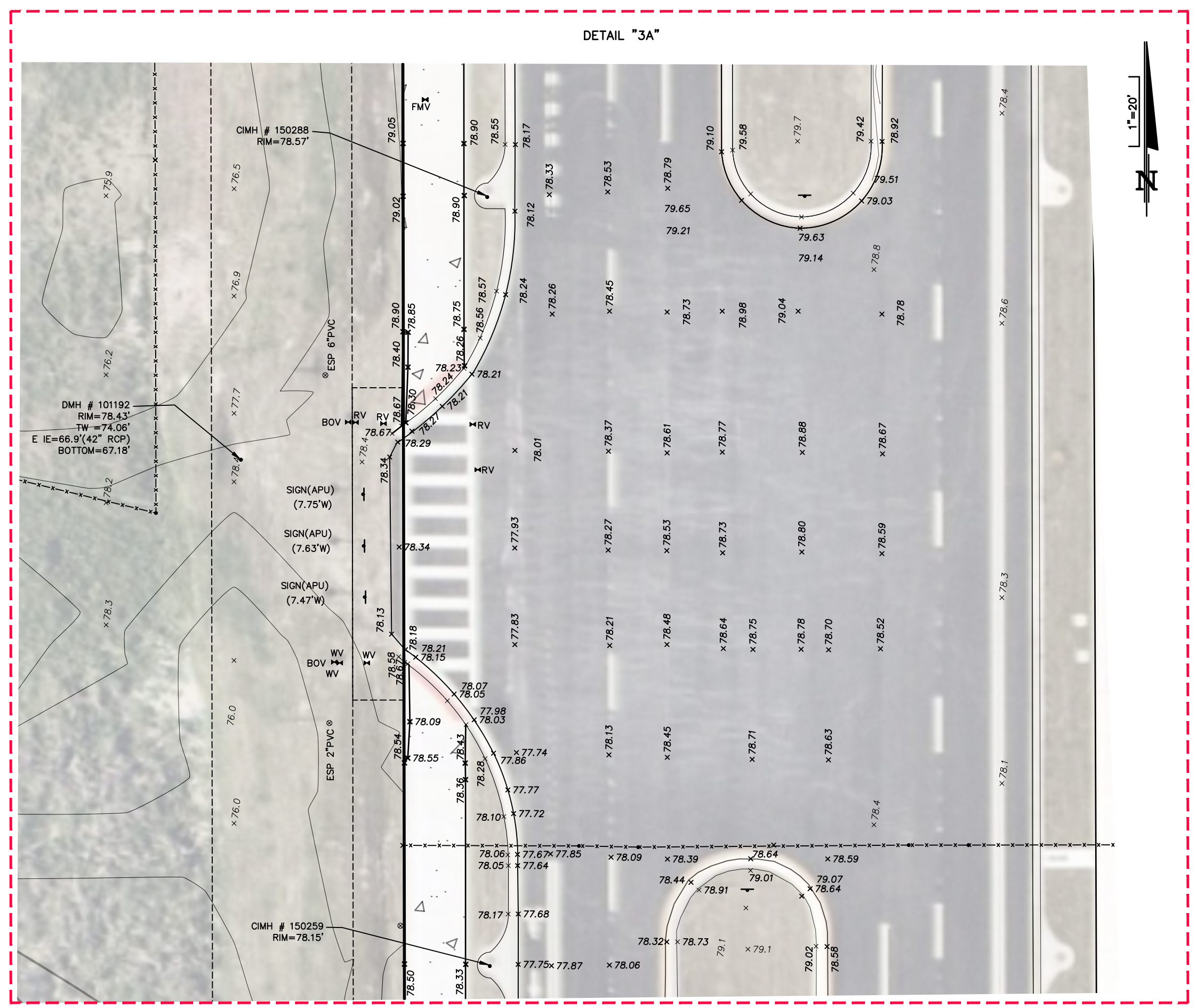




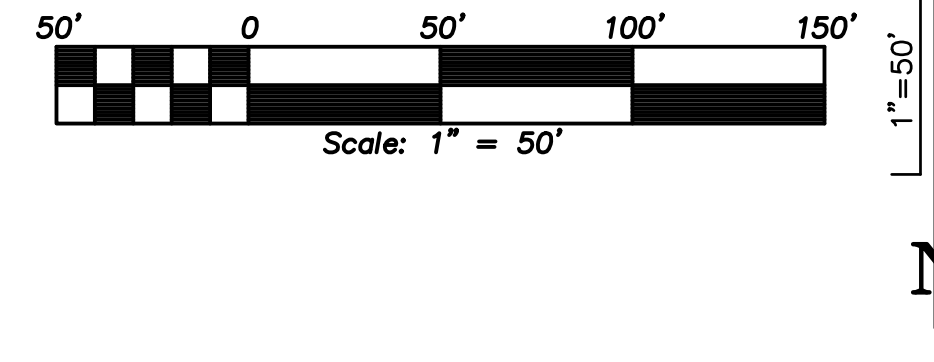
# TOPOGRAPHIC SURVEY



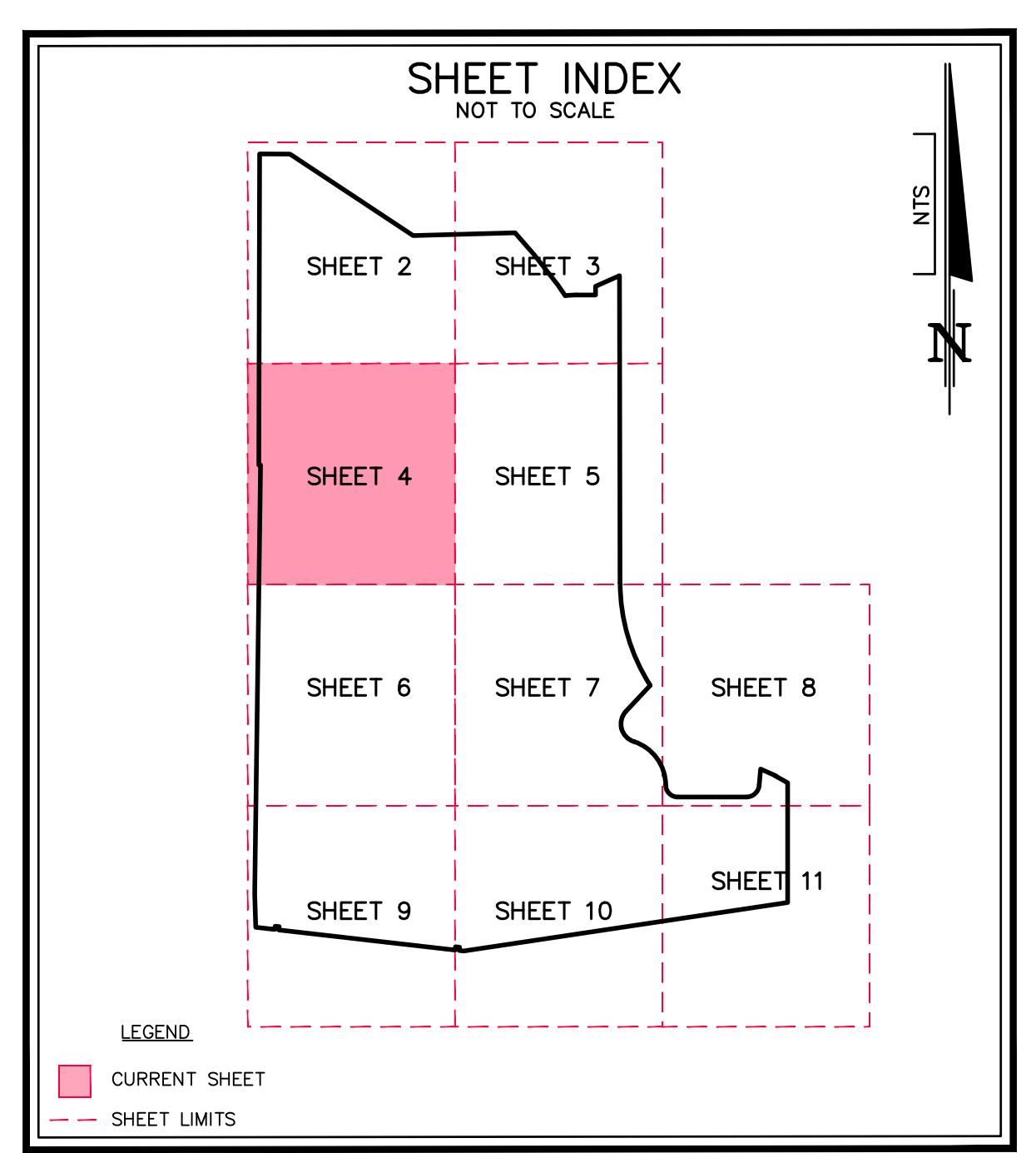
- | SYMBOLS |                                | LEGEND |                     | ABBREVIATIONS |                                 |
|---------|--------------------------------|--------|---------------------|---------------|---------------------------------|
| LI      | LINE NUMBER (SEE LINE TABLE)   | SPY    | SHORTCUT PRE-CENTER | ALP           | AMERICAN LAND TITLE ASSOCIATION |
| CL      | CURVE NUMBER (SEE CURVE TABLE) | BSV    | BLOW OFF VALVE      | APP           | APPROPRIATION                   |
| CP      | CENTER POINT                   | WMS    | WATER METER         | APV           | APPROPRIATION                   |
| RA      | RADIUS                         | WMT    | WATER METER TIE     | BC            | BACK OF CURVE                   |
| DL      | DRIVER LEADING                 | WMS    | WATER METER SET     | BE            | BEARING                         |
| CS      | CORNER                         | WMS    | WATER METER STOP    | BEI           | BEARING AND DISTANCE            |
| SD      | SPOT ELEVATION EXISTING        | WMS    | WATER METER STOP    | BL            | BLIND POINT                     |
| SP      | SPOT                           | WMS    | WATER METER STOP    | BN            | BORING                          |
| SON     | SECTION                        | WMS    | WATER METER STOP    | BR            | BURNED                          |
| SE      | SECTION                        | WMS    | WATER METER STOP    | BS            | BURNED SURFACE                  |
| SE      | SECTION                        | WMS    | WATER METER STOP    | BS            | BURNED SURFACE                  |
| SE      | SECTION                        | WMS    | WATER METER STOP    | BS            | BURNED SURFACE                  |
| SE      | SECTION                        | WMS    | WATER METER STOP    | BS            | BURNED SURFACE                  |



# TOPOGRAPHIC SURVEY



SYMBOLS		LEGEND		ABBREVIATIONS	
11	LINE NUMBER (SEE LINE TABLE)	BSV	BANK/LOW PRECEDENT	ALTA	AMERICAN LAND TITLE ASSOCIATION
12	CURVE NUMBER (SEE CURVE TABLE)	UMV	UNDERGROUND WATER MARKER	APR	APPROPRIATE
13	RADIUS	WV	WATER VALVE	ASD	ASBESTOS
14	ARC BEARING	WV	WATER VALVE	ASD	ASBESTOS
15	CHORD BEARING	WV	WATER VALVE	ASD	ASBESTOS
16	CHORD BEARING	WV	WATER VALVE	ASD	ASBESTOS
17	CHORD BEARING	WV	WATER VALVE	ASD	ASBESTOS
18	CHORD BEARING	WV	WATER VALVE	ASD	ASBESTOS
19	CHORD BEARING	WV	WATER VALVE	ASD	ASBESTOS
20	CHORD BEARING	WV	WATER VALVE	ASD	ASBESTOS
21	CHORD BEARING	WV	WATER VALVE	ASD	ASBESTOS
22	CHORD BEARING	WV	WATER VALVE	ASD	ASBESTOS
23	CHORD BEARING	WV	WATER VALVE	ASD	ASBESTOS
24	CHORD BEARING	WV	WATER VALVE	ASD	ASBESTOS
25	CHORD BEARING	WV	WATER VALVE	ASD	ASBESTOS
26	CHORD BEARING	WV	WATER VALVE	ASD	ASBESTOS
27	CHORD BEARING	WV	WATER VALVE	ASD	ASBESTOS
28	CHORD BEARING	WV	WATER VALVE	ASD	ASBESTOS
29	CHORD BEARING	WV	WATER VALVE	ASD	ASBESTOS
30	CHORD BEARING	WV	WATER VALVE	ASD	ASBESTOS
31	CHORD BEARING	WV	WATER VALVE	ASD	ASBESTOS
32	CHORD BEARING	WV	WATER VALVE	ASD	ASBESTOS
33	CHORD BEARING	WV	WATER VALVE	ASD	ASBESTOS
34	CHORD BEARING	WV	WATER VALVE	ASD	ASBESTOS
35	CHORD BEARING	WV	WATER VALVE	ASD	ASBESTOS
36	CHORD BEARING	WV	WATER VALVE	ASD	ASBESTOS
37	CHORD BEARING	WV	WATER VALVE	ASD	ASBESTOS
38	CHORD BEARING	WV	WATER VALVE	ASD	ASBESTOS
39	CHORD BEARING	WV	WATER VALVE	ASD	ASBESTOS
40	CHORD BEARING	WV	WATER VALVE	ASD	ASBESTOS
41	CHORD BEARING	WV	WATER VALVE	ASD	ASBESTOS
42	CHORD BEARING	WV	WATER VALVE	ASD	ASBESTOS
43	CHORD BEARING	WV	WATER VALVE	ASD	ASBESTOS
44	CHORD BEARING	WV	WATER VALVE	ASD	ASBESTOS
45	CHORD BEARING	WV	WATER VALVE	ASD	ASBESTOS
46	CHORD BEARING	WV	WATER VALVE	ASD	ASBESTOS
47	CHORD BEARING	WV	WATER VALVE	ASD	ASBESTOS
48	CHORD BEARING	WV	WATER VALVE	ASD	ASBESTOS
49	CHORD BEARING	WV	WATER VALVE	ASD	ASBESTOS
50	CHORD BEARING	WV	WATER VALVE	ASD	ASBESTOS
51	CHORD BEARING	WV	WATER VALVE	ASD	ASBESTOS
52	CHORD BEARING	WV	WATER VALVE	ASD	ASBESTOS
53	CHORD BEARING	WV	WATER VALVE	ASD	ASBESTOS
54	CHORD BEARING	WV	WATER VALVE	ASD	ASBESTOS
55	CHORD BEARING	WV	WATER VALVE	ASD	ASBESTOS
56	CHORD BEARING	WV	WATER VALVE	ASD	ASBESTOS
57	CHORD BEARING	WV	WATER VALVE	ASD	ASBESTOS
58	CHORD BEARING	WV	WATER VALVE	ASD	ASBESTOS
59	CHORD BEARING	WV	WATER VALVE	ASD	ASBESTOS
60	CHORD BEARING	WV	WATER VALVE	ASD	ASBESTOS
61	CHORD BEARING	WV	WATER VALVE	ASD	ASBESTOS
62	CHORD BEARING	WV	WATER VALVE	ASD	ASBESTOS
63	CHORD BEARING	WV	WATER VALVE	ASD	ASBESTOS
64	CHORD BEARING	WV	WATER VALVE	ASD	ASBESTOS
65	CHORD BEARING	WV	WATER VALVE	ASD	ASBESTOS
66	CHORD BEARING	WV	WATER VALVE	ASD	ASBESTOS
67	CHORD BEARING	WV	WATER VALVE	ASD	ASBESTOS
68	CHORD BEARING	WV	WATER VALVE	ASD	ASBESTOS
69	CHORD BEARING	WV	WATER VALVE	ASD	ASBESTOS
70	CHORD BEARING	WV	WATER VALVE	ASD	ASBESTOS
71	CHORD BEARING	WV	WATER VALVE	ASD	ASBESTOS
72	CHORD BEARING	WV	WATER VALVE	ASD	ASBESTOS
73	CHORD BEARING	WV	WATER VALVE	ASD	ASBESTOS
74	CHORD BEARING	WV	WATER VALVE	ASD	ASBESTOS
75	CHORD BEARING	WV	WATER VALVE	ASD	ASBESTOS
76	CHORD BEARING	WV	WATER VALVE	ASD	ASBESTOS
77	CHORD BEARING	WV	WATER VALVE	ASD	ASBESTOS
78	CHORD BEARING	WV	WATER VALVE	ASD	ASBESTOS
79	CHORD BEARING	WV	WATER VALVE	ASD	ASBESTOS
80	CHORD BEARING	WV	WATER VALVE	ASD	ASBESTOS
81	CHORD BEARING	WV	WATER VALVE	ASD	ASBESTOS
82	CHORD BEARING	WV	WATER VALVE	ASD	ASBESTOS
83	CHORD BEARING	WV	WATER VALVE	ASD	ASBESTOS
84	CHORD BEARING	WV	WATER VALVE	ASD	ASBESTOS
85	CHORD BEARING	WV	WATER VALVE	ASD	ASBESTOS
86	CHORD BEARING	WV	WATER VALVE	ASD	ASBESTOS
87	CHORD BEARING	WV	WATER VALVE	ASD	ASBESTOS
88	CHORD BEARING	WV	WATER VALVE	ASD	ASBESTOS
89	CHORD BEARING	WV	WATER VALVE	ASD	ASBESTOS
90	CHORD BEARING	WV	WATER VALVE	ASD	ASBESTOS
91	CHORD BEARING	WV	WATER VALVE	ASD	ASBESTOS
92	CHORD BEARING	WV	WATER VALVE	ASD	ASBESTOS
93	CHORD BEARING	WV	WATER VALVE	ASD	ASBESTOS
94	CHORD BEARING	WV	WATER VALVE	ASD	ASBESTOS
95	CHORD BEARING	WV	WATER VALVE	ASD	ASBESTOS
96	CHORD BEARING	WV	WATER VALVE	ASD	ASBESTOS
97	CHORD BEARING	WV	WATER VALVE	ASD	ASBESTOS
98	CHORD BEARING	WV	WATER VALVE	ASD	ASBESTOS
99	CHORD BEARING	WV	WATER VALVE	ASD	ASBESTOS
100	CHORD BEARING	WV	WATER VALVE	ASD	ASBESTOS



DRAWING CS-16-212(B1)	PREPARED FOR:	<b>Tavistock East Services, LLC</b> SUNBRIDGE ORANGE COUNTY PARCEL N-6	DONALD W. McINTOSH ASSOCIATES, INC. ENGINEERS PLANNERS 1950 SUMMIT PARK DRIVE SUITE 600 ORLANDO, FLORIDA 32810 (407) 644-4068 CERTIFICATE OF AUTHORIZATION NO. LB88	NO. DATE REVISIONS CHK.
	SHEET			
4 OF 11				

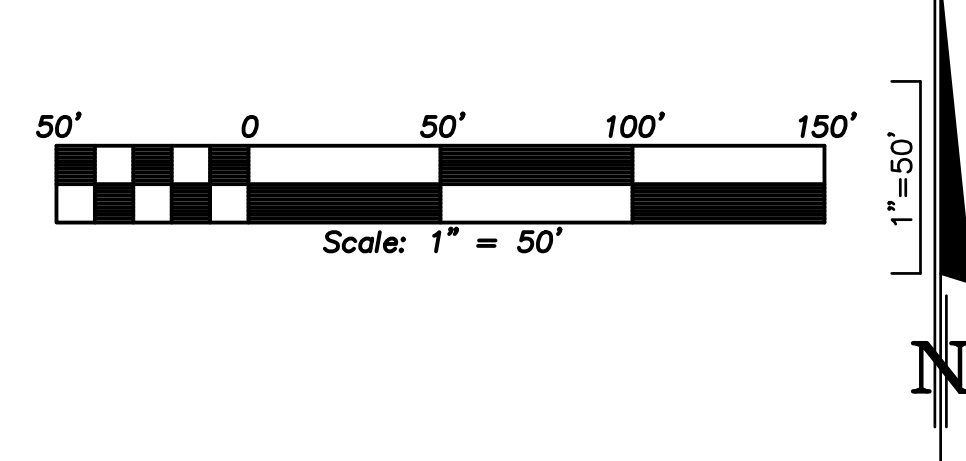
Printed: Tue 15-06-2024 - 08:04 AM  
 P:\Projects\151212\SUNBRIDGE\DWG\16-212(B1)\_ALTA-NPS SUNBRIDGE N6 PARCEL.dwg

DONALD W. McINTOSH ASSOCIATES, INC. ENGINEERS PLANNERS  
 1950 SUMMIT PARK DRIVE SUITE 600 ORLANDO, FLORIDA 32810 (407) 644-4068  
 CERTIFICATE OF AUTHORIZATION NO. LB88

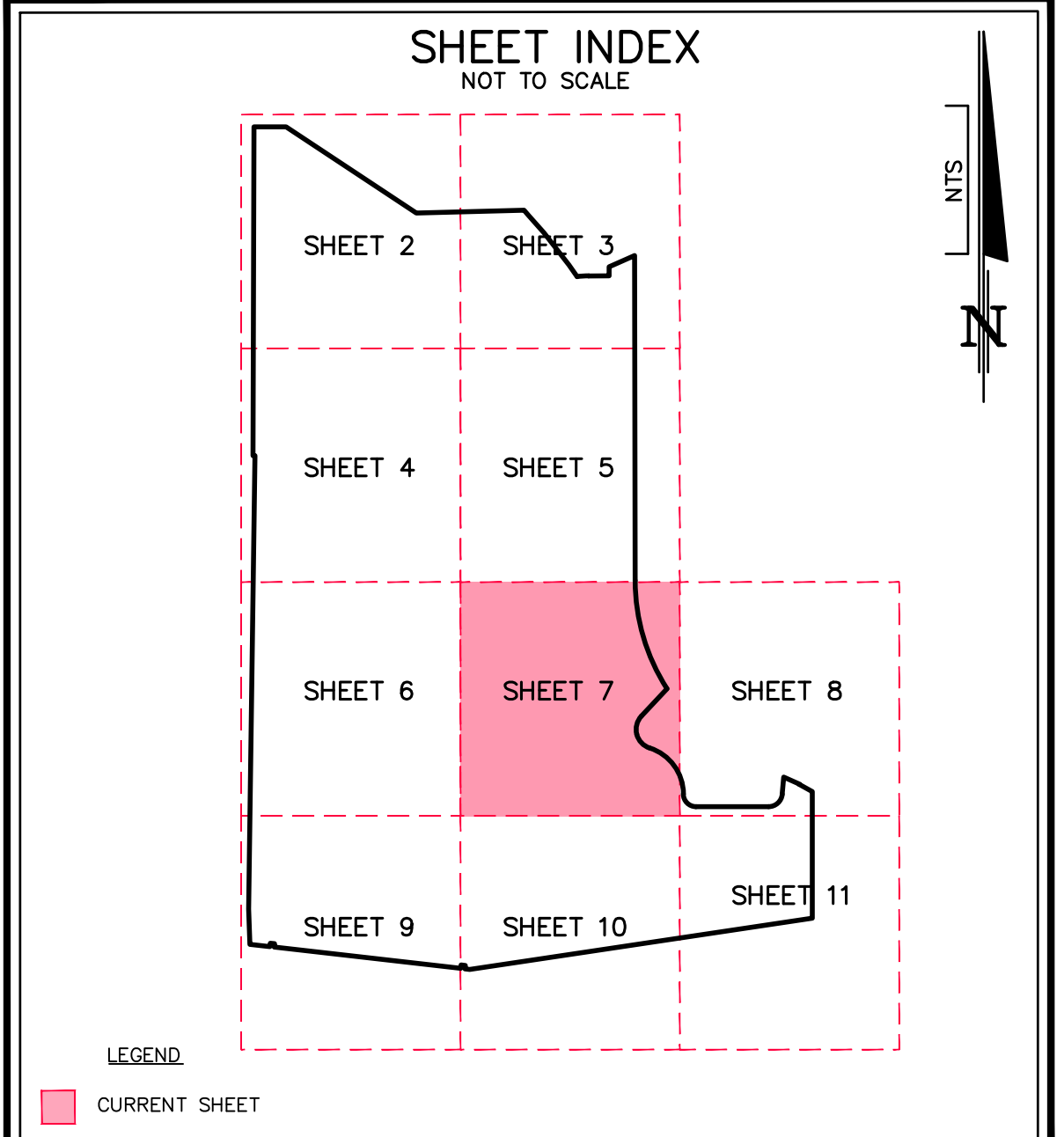




# TOPOGRAPHIC SURVEY



SYMBOLS		LEGEND		ABBREVIATIONS	
11	LINE NUMBER (SEE LINE TABLE)	BS	BENCHMARK	ALTA	AMERICAN LAND TITLE ASSOCIATION
12	CURVE NUMBER (SEE CURVE TABLE)	BM	BENCH MARK	AP	APPROPRIATE
13	RADIUS	BS	BENCH MARK	AS	ASSOCIATION OF SURVEYORS
14	ARC LENGTH	BS	BENCH MARK	AS	ASSOCIATION OF SURVEYORS
15	CHORD BEARING	BS	BENCH MARK	AS	ASSOCIATION OF SURVEYORS
16	CHORD BEARING	BS	BENCH MARK	AS	ASSOCIATION OF SURVEYORS
17	CHORD BEARING	BS	BENCH MARK	AS	ASSOCIATION OF SURVEYORS
18	CHORD BEARING	BS	BENCH MARK	AS	ASSOCIATION OF SURVEYORS
19	CHORD BEARING	BS	BENCH MARK	AS	ASSOCIATION OF SURVEYORS
20	CHORD BEARING	BS	BENCH MARK	AS	ASSOCIATION OF SURVEYORS
21	CHORD BEARING	BS	BENCH MARK	AS	ASSOCIATION OF SURVEYORS
22	CHORD BEARING	BS	BENCH MARK	AS	ASSOCIATION OF SURVEYORS
23	CHORD BEARING	BS	BENCH MARK	AS	ASSOCIATION OF SURVEYORS
24	CHORD BEARING	BS	BENCH MARK	AS	ASSOCIATION OF SURVEYORS
25	CHORD BEARING	BS	BENCH MARK	AS	ASSOCIATION OF SURVEYORS
26	CHORD BEARING	BS	BENCH MARK	AS	ASSOCIATION OF SURVEYORS
27	CHORD BEARING	BS	BENCH MARK	AS	ASSOCIATION OF SURVEYORS
28	CHORD BEARING	BS	BENCH MARK	AS	ASSOCIATION OF SURVEYORS
29	CHORD BEARING	BS	BENCH MARK	AS	ASSOCIATION OF SURVEYORS
30	CHORD BEARING	BS	BENCH MARK	AS	ASSOCIATION OF SURVEYORS
31	CHORD BEARING	BS	BENCH MARK	AS	ASSOCIATION OF SURVEYORS
32	CHORD BEARING	BS	BENCH MARK	AS	ASSOCIATION OF SURVEYORS
33	CHORD BEARING	BS	BENCH MARK	AS	ASSOCIATION OF SURVEYORS
34	CHORD BEARING	BS	BENCH MARK	AS	ASSOCIATION OF SURVEYORS
35	CHORD BEARING	BS	BENCH MARK	AS	ASSOCIATION OF SURVEYORS
36	CHORD BEARING	BS	BENCH MARK	AS	ASSOCIATION OF SURVEYORS
37	CHORD BEARING	BS	BENCH MARK	AS	ASSOCIATION OF SURVEYORS
38	CHORD BEARING	BS	BENCH MARK	AS	ASSOCIATION OF SURVEYORS
39	CHORD BEARING	BS	BENCH MARK	AS	ASSOCIATION OF SURVEYORS
40	CHORD BEARING	BS	BENCH MARK	AS	ASSOCIATION OF SURVEYORS
41	CHORD BEARING	BS	BENCH MARK	AS	ASSOCIATION OF SURVEYORS
42	CHORD BEARING	BS	BENCH MARK	AS	ASSOCIATION OF SURVEYORS
43	CHORD BEARING	BS	BENCH MARK	AS	ASSOCIATION OF SURVEYORS
44	CHORD BEARING	BS	BENCH MARK	AS	ASSOCIATION OF SURVEYORS
45	CHORD BEARING	BS	BENCH MARK	AS	ASSOCIATION OF SURVEYORS
46	CHORD BEARING	BS	BENCH MARK	AS	ASSOCIATION OF SURVEYORS
47	CHORD BEARING	BS	BENCH MARK	AS	ASSOCIATION OF SURVEYORS
48	CHORD BEARING	BS	BENCH MARK	AS	ASSOCIATION OF SURVEYORS
49	CHORD BEARING	BS	BENCH MARK	AS	ASSOCIATION OF SURVEYORS
50	CHORD BEARING	BS	BENCH MARK	AS	ASSOCIATION OF SURVEYORS
51	CHORD BEARING	BS	BENCH MARK	AS	ASSOCIATION OF SURVEYORS
52	CHORD BEARING	BS	BENCH MARK	AS	ASSOCIATION OF SURVEYORS
53	CHORD BEARING	BS	BENCH MARK	AS	ASSOCIATION OF SURVEYORS
54	CHORD BEARING	BS	BENCH MARK	AS	ASSOCIATION OF SURVEYORS
55	CHORD BEARING	BS	BENCH MARK	AS	ASSOCIATION OF SURVEYORS
56	CHORD BEARING	BS	BENCH MARK	AS	ASSOCIATION OF SURVEYORS
57	CHORD BEARING	BS	BENCH MARK	AS	ASSOCIATION OF SURVEYORS
58	CHORD BEARING	BS	BENCH MARK	AS	ASSOCIATION OF SURVEYORS
59	CHORD BEARING	BS	BENCH MARK	AS	ASSOCIATION OF SURVEYORS
60	CHORD BEARING	BS	BENCH MARK	AS	ASSOCIATION OF SURVEYORS
61	CHORD BEARING	BS	BENCH MARK	AS	ASSOCIATION OF SURVEYORS
62	CHORD BEARING	BS	BENCH MARK	AS	ASSOCIATION OF SURVEYORS
63	CHORD BEARING	BS	BENCH MARK	AS	ASSOCIATION OF SURVEYORS
64	CHORD BEARING	BS	BENCH MARK	AS	ASSOCIATION OF SURVEYORS
65	CHORD BEARING	BS	BENCH MARK	AS	ASSOCIATION OF SURVEYORS
66	CHORD BEARING	BS	BENCH MARK	AS	ASSOCIATION OF SURVEYORS
67	CHORD BEARING	BS	BENCH MARK	AS	ASSOCIATION OF SURVEYORS
68	CHORD BEARING	BS	BENCH MARK	AS	ASSOCIATION OF SURVEYORS
69	CHORD BEARING	BS	BENCH MARK	AS	ASSOCIATION OF SURVEYORS
70	CHORD BEARING	BS	BENCH MARK	AS	ASSOCIATION OF SURVEYORS
71	CHORD BEARING	BS	BENCH MARK	AS	ASSOCIATION OF SURVEYORS
72	CHORD BEARING	BS	BENCH MARK	AS	ASSOCIATION OF SURVEYORS
73	CHORD BEARING	BS	BENCH MARK	AS	ASSOCIATION OF SURVEYORS
74	CHORD BEARING	BS	BENCH MARK	AS	ASSOCIATION OF SURVEYORS
75	CHORD BEARING	BS	BENCH MARK	AS	ASSOCIATION OF SURVEYORS
76	CHORD BEARING	BS	BENCH MARK	AS	ASSOCIATION OF SURVEYORS
77	CHORD BEARING	BS	BENCH MARK	AS	ASSOCIATION OF SURVEYORS
78	CHORD BEARING	BS	BENCH MARK	AS	ASSOCIATION OF SURVEYORS
79	CHORD BEARING	BS	BENCH MARK	AS	ASSOCIATION OF SURVEYORS
80	CHORD BEARING	BS	BENCH MARK	AS	ASSOCIATION OF SURVEYORS
81	CHORD BEARING	BS	BENCH MARK	AS	ASSOCIATION OF SURVEYORS
82	CHORD BEARING	BS	BENCH MARK	AS	ASSOCIATION OF SURVEYORS
83	CHORD BEARING	BS	BENCH MARK	AS	ASSOCIATION OF SURVEYORS
84	CHORD BEARING	BS	BENCH MARK	AS	ASSOCIATION OF SURVEYORS
85	CHORD BEARING	BS	BENCH MARK	AS	ASSOCIATION OF SURVEYORS
86	CHORD BEARING	BS	BENCH MARK	AS	ASSOCIATION OF SURVEYORS
87	CHORD BEARING	BS	BENCH MARK	AS	ASSOCIATION OF SURVEYORS
88	CHORD BEARING	BS	BENCH MARK	AS	ASSOCIATION OF SURVEYORS
89	CHORD BEARING	BS	BENCH MARK	AS	ASSOCIATION OF SURVEYORS
90	CHORD BEARING	BS	BENCH MARK	AS	ASSOCIATION OF SURVEYORS
91	CHORD BEARING	BS	BENCH MARK	AS	ASSOCIATION OF SURVEYORS
92	CHORD BEARING	BS	BENCH MARK	AS	ASSOCIATION OF SURVEYORS
93	CHORD BEARING	BS	BENCH MARK	AS	ASSOCIATION OF SURVEYORS
94	CHORD BEARING	BS	BENCH MARK	AS	ASSOCIATION OF SURVEYORS
95	CHORD BEARING	BS	BENCH MARK	AS	ASSOCIATION OF SURVEYORS
96	CHORD BEARING	BS	BENCH MARK	AS	ASSOCIATION OF SURVEYORS
97	CHORD BEARING	BS	BENCH MARK	AS	ASSOCIATION OF SURVEYORS
98	CHORD BEARING	BS	BENCH MARK	AS	ASSOCIATION OF SURVEYORS
99	CHORD BEARING	BS	BENCH MARK	AS	ASSOCIATION OF SURVEYORS
100	CHORD BEARING	BS	BENCH MARK	AS	ASSOCIATION OF SURVEYORS

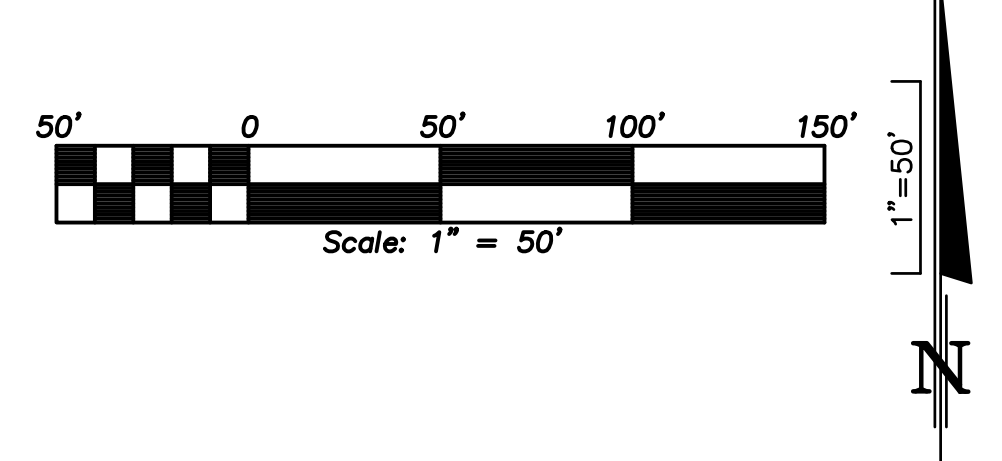


<b>DRAWING</b> CS-16-212(B1)	<b>PREPARED FOR:</b>  Tavistock East Services, LLC	<b>DONALD W. McINTOSH ASSOCIATES, INC.</b> ENGINEERS PLANNERS 1950 SUMMIT PARK DRIVE SUITE 600 ORLANDO, FLORIDA 32810 (407) 644-4066 CERTIFICATE OF AUTHORIZATION NO. LB88	<table border="1" style="width:100%; border-collapse: collapse;"> <tr> <td>DATE: 08/26/24</td> <td>CHECKED BY: RLC</td> <td>FIELD BOOKS: 1419</td> <td>SCALE: 1"=50'</td> <td>JOB NUMBER: 24607.001</td> </tr> </table>	DATE: 08/26/24	CHECKED BY: RLC	FIELD BOOKS: 1419	SCALE: 1"=50'	JOB NUMBER: 24607.001	<table border="1" style="width:100%; border-collapse: collapse;"> <tr> <th>NO.</th> <th>DATE</th> <th>DESCRIPTION</th> <th>CHK.</th> </tr> <tr> <td> </td> <td> </td> <td> </td> <td> </td> </tr> <tr> <td> </td> <td> </td> <td> </td> <td> </td> </tr> </table>	NO.	DATE	DESCRIPTION	CHK.								
DATE: 08/26/24	CHECKED BY: RLC	FIELD BOOKS: 1419	SCALE: 1"=50'	JOB NUMBER: 24607.001																	
NO.	DATE	DESCRIPTION	CHK.																		
7 OF 11 SUNBRIDGE ORANGE COUNTY PARCEL N-6		DONALD W. McINTOSH ASSOCIATES, INC.		PRINTED: Tue 08-26-2024 - 08:04 AM P:\Projects\16212\SUNBRIDGE\DWG\16-212(B1) ALTA-NPS SUNBRIDGE N6 PARCEL.dwg																	





# TOPOGRAPHIC SURVEY

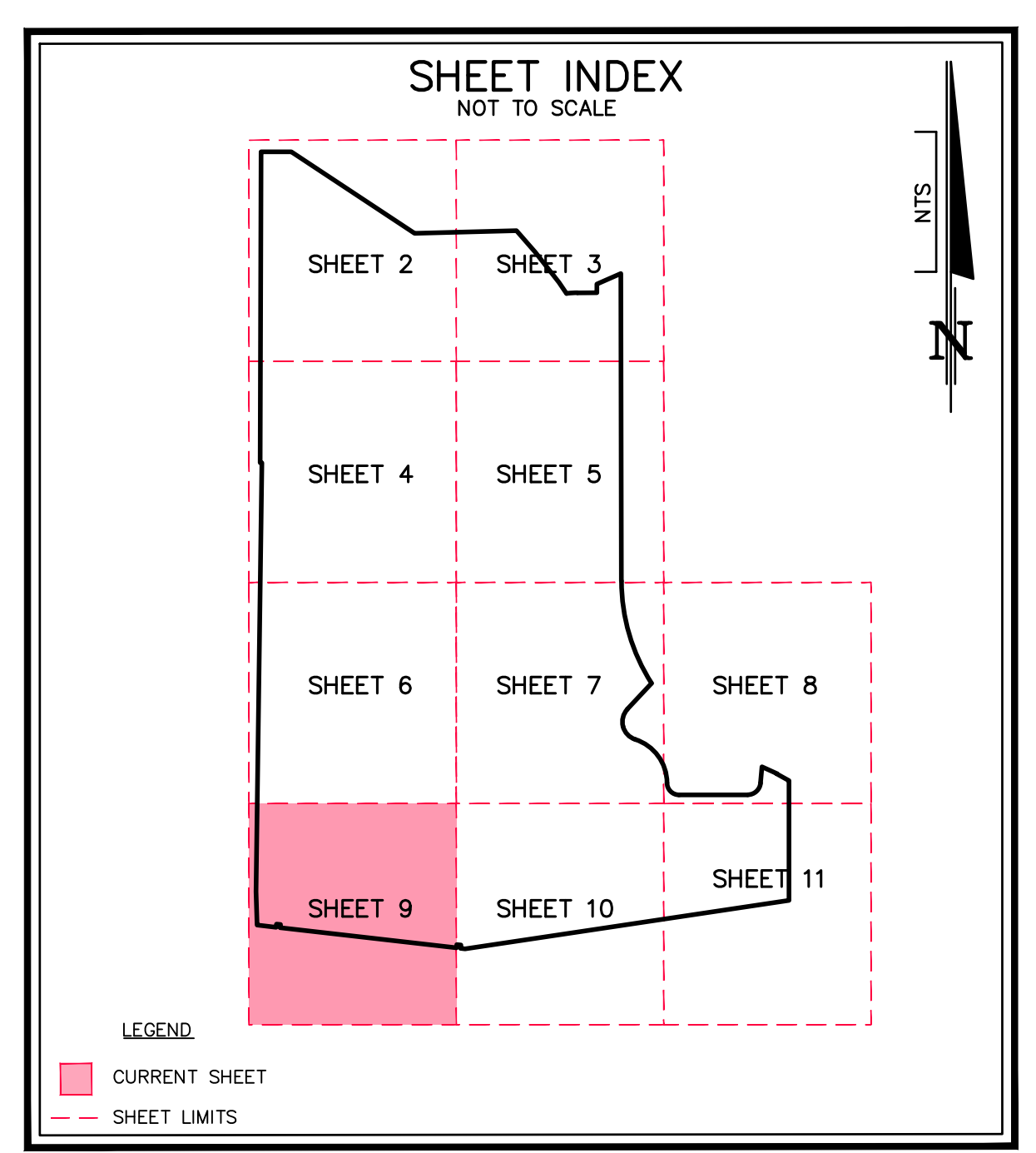


MATCH LINE SEE SHEET 6



MATCH LINE SEE SHEET 10

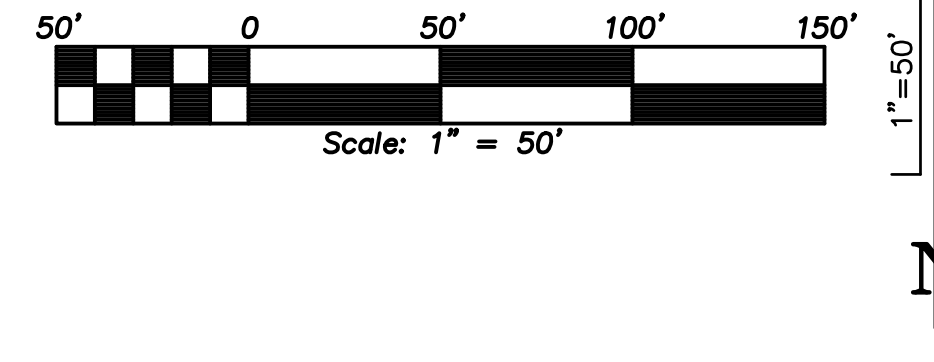
- | SYMBOLS                           | LEGEND | ABBREVIATIONS                   |
|-----------------------------------|--------|---------------------------------|
| 1" LINE NUMBER (SEE LINE TABLE)   | RFV    | AMERICAN LAND TITLE ASSOCIATION |
| 2" CENTER MARK (SEE CENTER TABLE) | RFV    | APPROVED                        |
| 3" RADIUS                         | RFV    | BASE OF CURVE                   |
| 4" CHORD BEARING                  | RFV    | BRIDGE                          |
| 5" CHORD BEARING                  | RFV    | BRIDGE                          |
| 6" CHORD BEARING                  | RFV    | BRIDGE                          |
| 7" CHORD BEARING                  | RFV    | BRIDGE                          |
| 8" CHORD BEARING                  | RFV    | BRIDGE                          |
| 9" CHORD BEARING                  | RFV    | BRIDGE                          |
| 10" CHORD BEARING                 | RFV    | BRIDGE                          |
| 11" CHORD BEARING                 | RFV    | BRIDGE                          |
| 12" CHORD BEARING                 | RFV    | BRIDGE                          |
| 13" CHORD BEARING                 | RFV    | BRIDGE                          |
| 14" CHORD BEARING                 | RFV    | BRIDGE                          |
| 15" CHORD BEARING                 | RFV    | BRIDGE                          |
| 16" CHORD BEARING                 | RFV    | BRIDGE                          |
| 17" CHORD BEARING                 | RFV    | BRIDGE                          |
| 18" CHORD BEARING                 | RFV    | BRIDGE                          |
| 19" CHORD BEARING                 | RFV    | BRIDGE                          |
| 20" CHORD BEARING                 | RFV    | BRIDGE                          |
| 21" CHORD BEARING                 | RFV    | BRIDGE                          |
| 22" CHORD BEARING                 | RFV    | BRIDGE                          |
| 23" CHORD BEARING                 | RFV    | BRIDGE                          |
| 24" CHORD BEARING                 | RFV    | BRIDGE                          |
| 25" CHORD BEARING                 | RFV    | BRIDGE                          |
| 26" CHORD BEARING                 | RFV    | BRIDGE                          |
| 27" CHORD BEARING                 | RFV    | BRIDGE                          |
| 28" CHORD BEARING                 | RFV    | BRIDGE                          |
| 29" CHORD BEARING                 | RFV    | BRIDGE                          |
| 30" CHORD BEARING                 | RFV    | BRIDGE                          |
| 31" CHORD BEARING                 | RFV    | BRIDGE                          |
| 32" CHORD BEARING                 | RFV    | BRIDGE                          |
| 33" CHORD BEARING                 | RFV    | BRIDGE                          |
| 34" CHORD BEARING                 | RFV    | BRIDGE                          |
| 35" CHORD BEARING                 | RFV    | BRIDGE                          |
| 36" CHORD BEARING                 | RFV    | BRIDGE                          |
| 37" CHORD BEARING                 | RFV    | BRIDGE                          |
| 38" CHORD BEARING                 | RFV    | BRIDGE                          |
| 39" CHORD BEARING                 | RFV    | BRIDGE                          |
| 40" CHORD BEARING                 | RFV    | BRIDGE                          |
| 41" CHORD BEARING                 | RFV    | BRIDGE                          |
| 42" CHORD BEARING                 | RFV    | BRIDGE                          |
| 43" CHORD BEARING                 | RFV    | BRIDGE                          |
| 44" CHORD BEARING                 | RFV    | BRIDGE                          |
| 45" CHORD BEARING                 | RFV    | BRIDGE                          |
| 46" CHORD BEARING                 | RFV    | BRIDGE                          |
| 47" CHORD BEARING                 | RFV    | BRIDGE                          |
| 48" CHORD BEARING                 | RFV    | BRIDGE                          |
| 49" CHORD BEARING                 | RFV    | BRIDGE                          |
| 50" CHORD BEARING                 | RFV    | BRIDGE                          |
| 51" CHORD BEARING                 | RFV    | BRIDGE                          |
| 52" CHORD BEARING                 | RFV    | BRIDGE                          |
| 53" CHORD BEARING                 | RFV    | BRIDGE                          |
| 54" CHORD BEARING                 | RFV    | BRIDGE                          |
| 55" CHORD BEARING                 | RFV    | BRIDGE                          |
| 56" CHORD BEARING                 | RFV    | BRIDGE                          |
| 57" CHORD BEARING                 | RFV    | BRIDGE                          |
| 58" CHORD BEARING                 | RFV    | BRIDGE                          |
| 59" CHORD BEARING                 | RFV    | BRIDGE                          |
| 60" CHORD BEARING                 | RFV    | BRIDGE                          |
| 61" CHORD BEARING                 | RFV    | BRIDGE                          |
| 62" CHORD BEARING                 | RFV    | BRIDGE                          |
| 63" CHORD BEARING                 | RFV    | BRIDGE                          |
| 64" CHORD BEARING                 | RFV    | BRIDGE                          |
| 65" CHORD BEARING                 | RFV    | BRIDGE                          |
| 66" CHORD BEARING                 | RFV    | BRIDGE                          |
| 67" CHORD BEARING                 | RFV    | BRIDGE                          |
| 68" CHORD BEARING                 | RFV    | BRIDGE                          |
| 69" CHORD BEARING                 | RFV    | BRIDGE                          |
| 70" CHORD BEARING                 | RFV    | BRIDGE                          |
| 71" CHORD BEARING                 | RFV    | BRIDGE                          |
| 72" CHORD BEARING                 | RFV    | BRIDGE                          |
| 73" CHORD BEARING                 | RFV    | BRIDGE                          |
| 74" CHORD BEARING                 | RFV    | BRIDGE                          |
| 75" CHORD BEARING                 | RFV    | BRIDGE                          |
| 76" CHORD BEARING                 | RFV    | BRIDGE                          |
| 77" CHORD BEARING                 | RFV    | BRIDGE                          |
| 78" CHORD BEARING                 | RFV    | BRIDGE                          |
| 79" CHORD BEARING                 | RFV    | BRIDGE                          |
| 80" CHORD BEARING                 | RFV    | BRIDGE                          |
| 81" CHORD BEARING                 | RFV    | BRIDGE                          |
| 82" CHORD BEARING                 | RFV    | BRIDGE                          |
| 83" CHORD BEARING                 | RFV    | BRIDGE                          |
| 84" CHORD BEARING                 | RFV    | BRIDGE                          |
| 85" CHORD BEARING                 | RFV    | BRIDGE                          |
| 86" CHORD BEARING                 | RFV    | BRIDGE                          |
| 87" CHORD BEARING                 | RFV    | BRIDGE                          |
| 88" CHORD BEARING                 | RFV    | BRIDGE                          |
| 89" CHORD BEARING                 | RFV    | BRIDGE                          |
| 90" CHORD BEARING                 | RFV    | BRIDGE                          |
| 91" CHORD BEARING                 | RFV    | BRIDGE                          |
| 92" CHORD BEARING                 | RFV    | BRIDGE                          |
| 93" CHORD BEARING                 | RFV    | BRIDGE                          |
| 94" CHORD BEARING                 | RFV    | BRIDGE                          |
| 95" CHORD BEARING                 | RFV    | BRIDGE                          |
| 96" CHORD BEARING                 | RFV    | BRIDGE                          |
| 97" CHORD BEARING                 | RFV    | BRIDGE                          |
| 98" CHORD BEARING                 | RFV    | BRIDGE                          |
| 99" CHORD BEARING                 | RFV    | BRIDGE                          |
| 100" CHORD BEARING                | RFV    | BRIDGE                          |



Printed: Tue 15-Oct-2024 - 08:09PM  
P:\Projects\1502\SUNBRIDGE\PARCEL N-6-212(B1)\ALTA-NRPS SUNBRIDGE N6 PARCEL.dwg

Drawn by: CAA  
Checked by: RLC  
Field Books: 1419  
Scale: 1"=50'  
Job Number: 24607.001  
No. Date Description Chk.

# TOPOGRAPHIC SURVEY



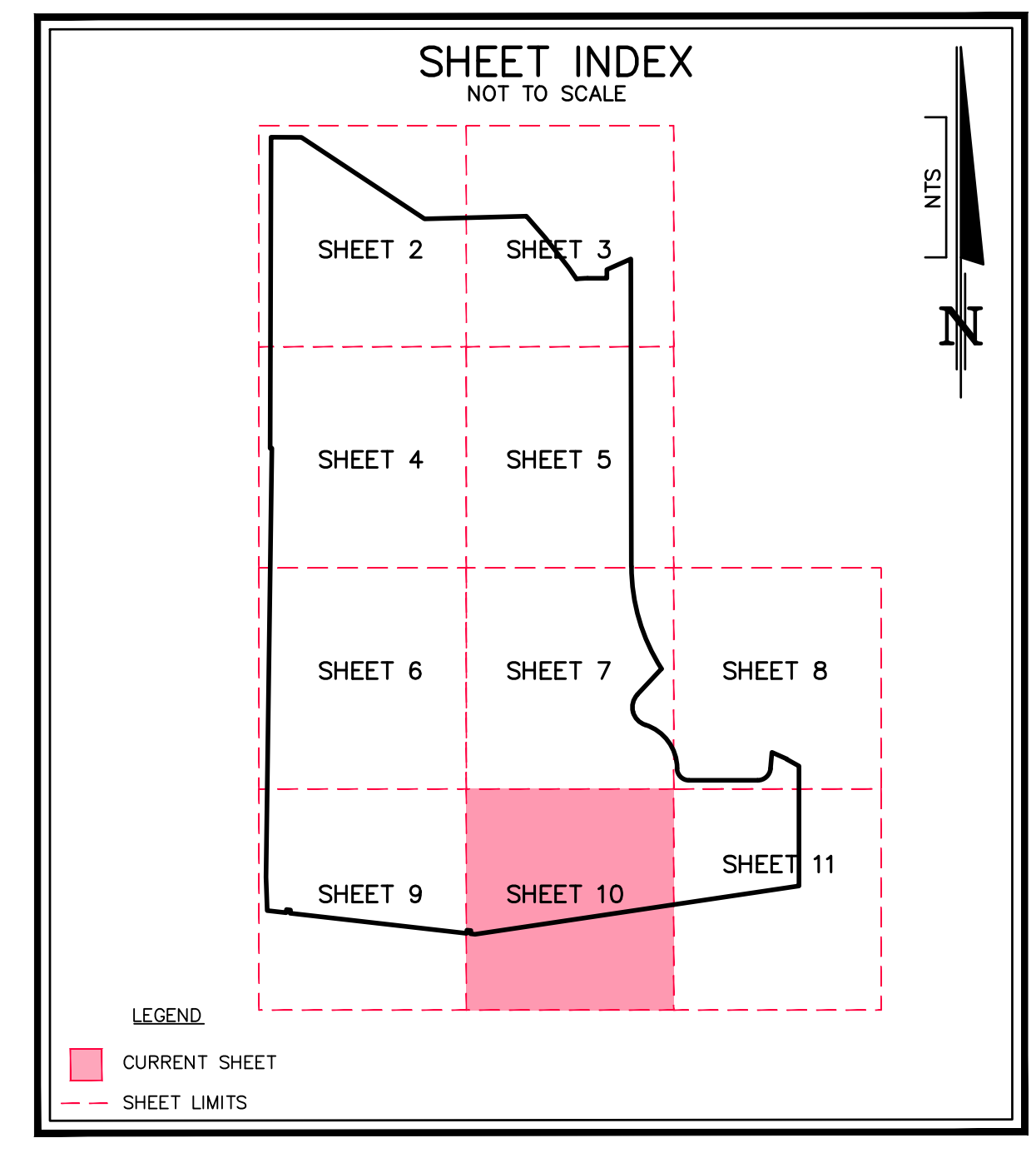
MATCH LINE SEE SHEET 7



MATCH LINE SEE SHEET 9

MATCH LINE SEE SHEET 11

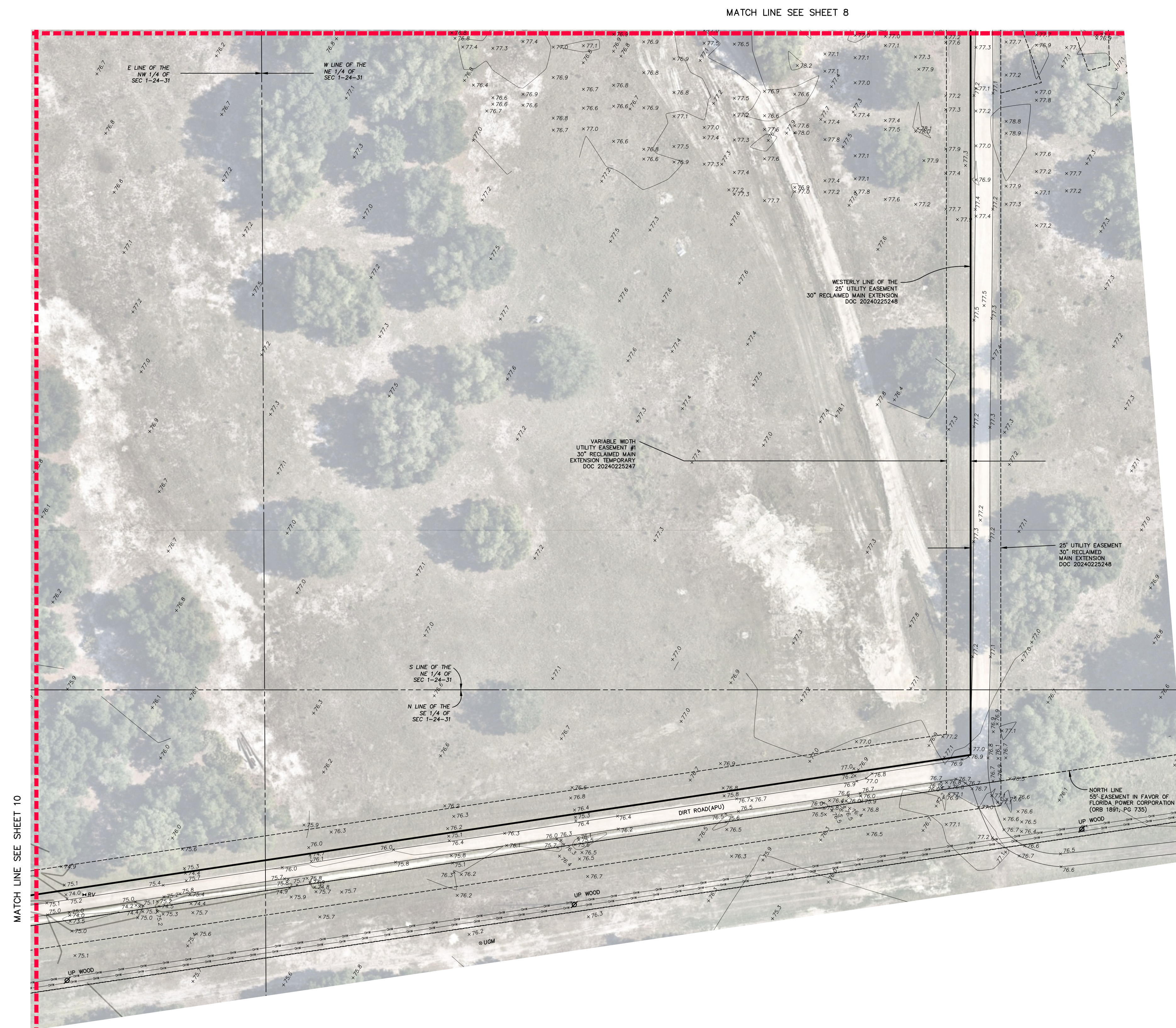
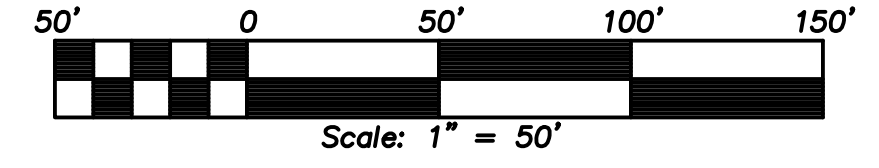
SYMBOLS		LEGEND		ABBREVIATIONS	
11	LINE NUMBER (SEE LINE TABLE)	RFV	RAISED VALVE	ALTA	AMERICAN LAND TITLE ASSOCIATION
12	CENTER MARK (SEE CENTER TABLE)	UM	UNDERGROUND WATER MARKER	APPROX	APPROXIMATE
13	RADIUS	RFV	RAISED VALVE	ASPT	ASBESTOS
14	CHORD BEARING	RFV	RAISED VALVE	BLD	BLIND
15	CHORD BEARING	RFV	RAISED VALVE	CD	COURT DEED
16	CHORD BEARING	RFV	RAISED VALVE	CO	COUNTY
17	CHORD BEARING	RFV	RAISED VALVE	COJ	COASTAL JUDICIAL
18	CHORD BEARING	RFV	RAISED VALVE	COU	COURT ORDER
19	CHORD BEARING	RFV	RAISED VALVE	COU	COURT ORDER
20	CHORD BEARING	RFV	RAISED VALVE	COU	COURT ORDER
21	CHORD BEARING	RFV	RAISED VALVE	COU	COURT ORDER
22	CHORD BEARING	RFV	RAISED VALVE	COU	COURT ORDER
23	CHORD BEARING	RFV	RAISED VALVE	COU	COURT ORDER
24	CHORD BEARING	RFV	RAISED VALVE	COU	COURT ORDER
25	CHORD BEARING	RFV	RAISED VALVE	COU	COURT ORDER
26	CHORD BEARING	RFV	RAISED VALVE	COU	COURT ORDER
27	CHORD BEARING	RFV	RAISED VALVE	COU	COURT ORDER
28	CHORD BEARING	RFV	RAISED VALVE	COU	COURT ORDER
29	CHORD BEARING	RFV	RAISED VALVE	COU	COURT ORDER
30	CHORD BEARING	RFV	RAISED VALVE	COU	COURT ORDER
31	CHORD BEARING	RFV	RAISED VALVE	COU	COURT ORDER
32	CHORD BEARING	RFV	RAISED VALVE	COU	COURT ORDER
33	CHORD BEARING	RFV	RAISED VALVE	COU	COURT ORDER
34	CHORD BEARING	RFV	RAISED VALVE	COU	COURT ORDER
35	CHORD BEARING	RFV	RAISED VALVE	COU	COURT ORDER
36	CHORD BEARING	RFV	RAISED VALVE	COU	COURT ORDER
37	CHORD BEARING	RFV	RAISED VALVE	COU	COURT ORDER
38	CHORD BEARING	RFV	RAISED VALVE	COU	COURT ORDER
39	CHORD BEARING	RFV	RAISED VALVE	COU	COURT ORDER
40	CHORD BEARING	RFV	RAISED VALVE	COU	COURT ORDER
41	CHORD BEARING	RFV	RAISED VALVE	COU	COURT ORDER
42	CHORD BEARING	RFV	RAISED VALVE	COU	COURT ORDER
43	CHORD BEARING	RFV	RAISED VALVE	COU	COURT ORDER
44	CHORD BEARING	RFV	RAISED VALVE	COU	COURT ORDER
45	CHORD BEARING	RFV	RAISED VALVE	COU	COURT ORDER
46	CHORD BEARING	RFV	RAISED VALVE	COU	COURT ORDER
47	CHORD BEARING	RFV	RAISED VALVE	COU	COURT ORDER
48	CHORD BEARING	RFV	RAISED VALVE	COU	COURT ORDER
49	CHORD BEARING	RFV	RAISED VALVE	COU	COURT ORDER
50	CHORD BEARING	RFV	RAISED VALVE	COU	COURT ORDER
51	CHORD BEARING	RFV	RAISED VALVE	COU	COURT ORDER
52	CHORD BEARING	RFV	RAISED VALVE	COU	COURT ORDER
53	CHORD BEARING	RFV	RAISED VALVE	COU	COURT ORDER
54	CHORD BEARING	RFV	RAISED VALVE	COU	COURT ORDER
55	CHORD BEARING	RFV	RAISED VALVE	COU	COURT ORDER
56	CHORD BEARING	RFV	RAISED VALVE	COU	COURT ORDER
57	CHORD BEARING	RFV	RAISED VALVE	COU	COURT ORDER
58	CHORD BEARING	RFV	RAISED VALVE	COU	COURT ORDER
59	CHORD BEARING	RFV	RAISED VALVE	COU	COURT ORDER
60	CHORD BEARING	RFV	RAISED VALVE	COU	COURT ORDER
61	CHORD BEARING	RFV	RAISED VALVE	COU	COURT ORDER
62	CHORD BEARING	RFV	RAISED VALVE	COU	COURT ORDER
63	CHORD BEARING	RFV	RAISED VALVE	COU	COURT ORDER
64	CHORD BEARING	RFV	RAISED VALVE	COU	COURT ORDER
65	CHORD BEARING	RFV	RAISED VALVE	COU	COURT ORDER
66	CHORD BEARING	RFV	RAISED VALVE	COU	COURT ORDER
67	CHORD BEARING	RFV	RAISED VALVE	COU	COURT ORDER
68	CHORD BEARING	RFV	RAISED VALVE	COU	COURT ORDER
69	CHORD BEARING	RFV	RAISED VALVE	COU	COURT ORDER
70	CHORD BEARING	RFV	RAISED VALVE	COU	COURT ORDER
71	CHORD BEARING	RFV	RAISED VALVE	COU	COURT ORDER
72	CHORD BEARING	RFV	RAISED VALVE	COU	COURT ORDER
73	CHORD BEARING	RFV	RAISED VALVE	COU	COURT ORDER
74	CHORD BEARING	RFV	RAISED VALVE	COU	COURT ORDER
75	CHORD BEARING	RFV	RAISED VALVE	COU	COURT ORDER
76	CHORD BEARING	RFV	RAISED VALVE	COU	COURT ORDER
77	CHORD BEARING	RFV	RAISED VALVE	COU	COURT ORDER
78	CHORD BEARING	RFV	RAISED VALVE	COU	COURT ORDER
79	CHORD BEARING	RFV	RAISED VALVE	COU	COURT ORDER
80	CHORD BEARING	RFV	RAISED VALVE	COU	COURT ORDER
81	CHORD BEARING	RFV	RAISED VALVE	COU	COURT ORDER
82	CHORD BEARING	RFV	RAISED VALVE	COU	COURT ORDER
83	CHORD BEARING	RFV	RAISED VALVE	COU	COURT ORDER
84	CHORD BEARING	RFV	RAISED VALVE	COU	COURT ORDER
85	CHORD BEARING	RFV	RAISED VALVE	COU	COURT ORDER
86	CHORD BEARING	RFV	RAISED VALVE	COU	COURT ORDER
87	CHORD BEARING	RFV	RAISED VALVE	COU	COURT ORDER
88	CHORD BEARING	RFV	RAISED VALVE	COU	COURT ORDER
89	CHORD BEARING	RFV	RAISED VALVE	COU	COURT ORDER
90	CHORD BEARING	RFV	RAISED VALVE	COU	COURT ORDER
91	CHORD BEARING	RFV	RAISED VALVE	COU	COURT ORDER
92	CHORD BEARING	RFV	RAISED VALVE	COU	COURT ORDER
93	CHORD BEARING	RFV	RAISED VALVE	COU	COURT ORDER
94	CHORD BEARING	RFV	RAISED VALVE	COU	COURT ORDER
95	CHORD BEARING	RFV	RAISED VALVE	COU	COURT ORDER
96	CHORD BEARING	RFV	RAISED VALVE	COU	COURT ORDER
97	CHORD BEARING	RFV	RAISED VALVE	COU	COURT ORDER
98	CHORD BEARING	RFV	RAISED VALVE	COU	COURT ORDER
99	CHORD BEARING	RFV	RAISED VALVE	COU	COURT ORDER
100	CHORD BEARING	RFV	RAISED VALVE	COU	COURT ORDER



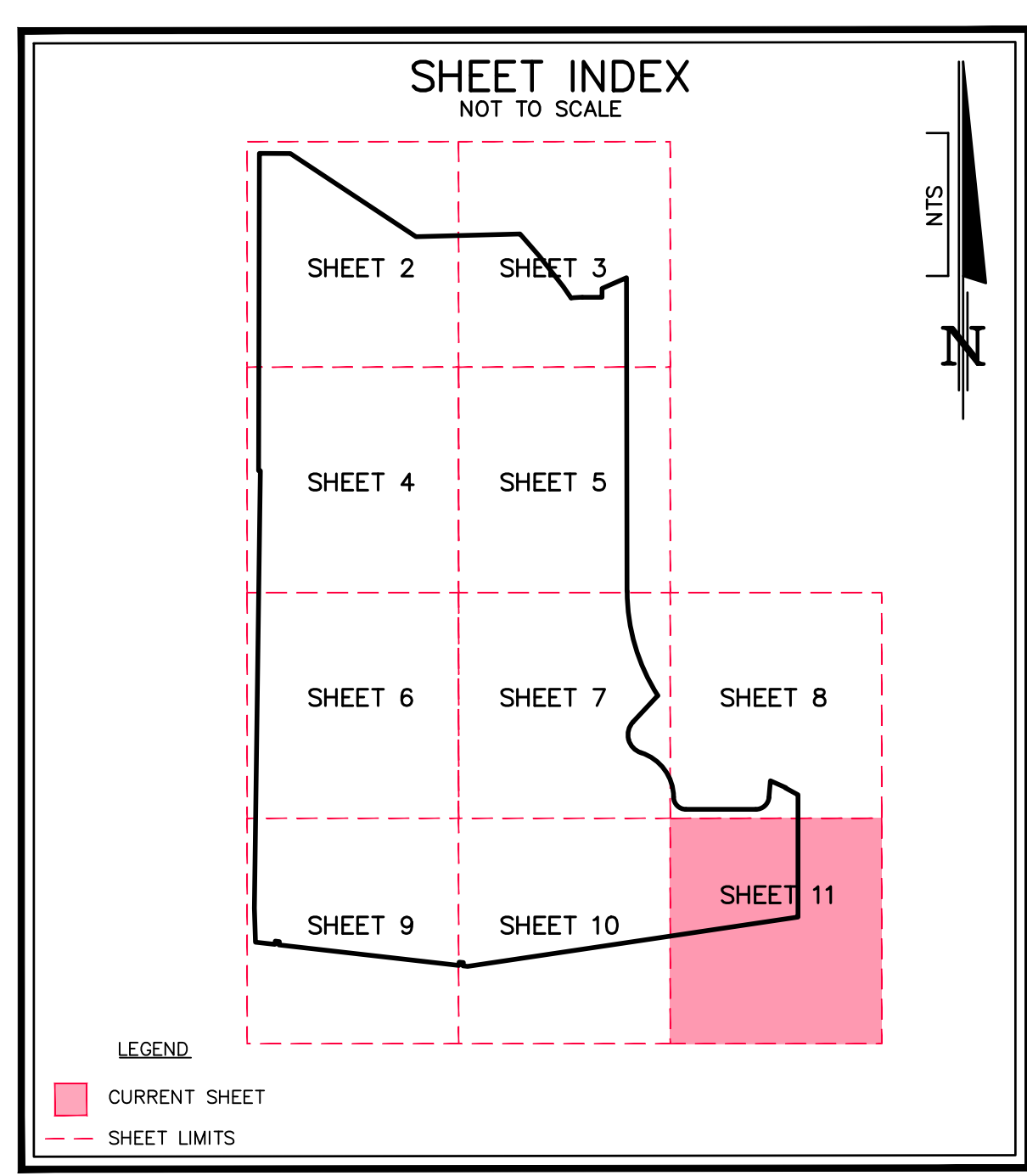
<p>DRAWING: CS-16-212(B1)</p> <p>SHEET: 10 OF 11</p>	<p>PREPARED FOR: <b>Tavistock East Services, LLC</b></p> <p>SUNBRIDGE ORANGE COUNTY PARCEL N-6</p>	<p><b>DONALD W. McINTOSH ASSOCIATES, INC.</b> ENGINEERS PLANNERS 1950 SUMMIT PARK DRIVE SUITE 600 ORLANDO, FLORIDA 32810 (407) 644-4068 CERTIFICATE OF AUTHORIZATION NO. LB88</p>	<table border="1" style="width:100%; border-collapse: collapse;"> <tr> <td>DATE: 08/26/24</td> <td>CHECKED BY: RLC</td> <td>FIELD BOOKS: 1419</td> <td>SCALE: 1"=50'</td> <td>JOB NUMBER: 24607.001</td> </tr> <tr> <td>NO.</td> <td>DATE</td> <td>DESCRIPTION</td> <td>CHK.</td> <td></td> </tr> <tr> <td> </td> <td> </td> <td> </td> <td> </td> <td> </td> </tr> <tr> <td> </td> <td> </td> <td> </td> <td> </td> <td> </td> </tr> </table>	DATE: 08/26/24	CHECKED BY: RLC	FIELD BOOKS: 1419	SCALE: 1"=50'	JOB NUMBER: 24607.001	NO.	DATE	DESCRIPTION	CHK.											
DATE: 08/26/24	CHECKED BY: RLC	FIELD BOOKS: 1419	SCALE: 1"=50'	JOB NUMBER: 24607.001																			
NO.	DATE	DESCRIPTION	CHK.																				

Printed: Tue 08-26-2024 - 08:09PM  
P:\Projects\1625\Drawings\Map\16-212(B1) ALTA-NPS SUNBRIDGE N6 PARCEL.dwg

# TOPOGRAPHIC SURVEY



SYMBOLS		LEGEND		ABBREVIATIONS	
11	LINE NUMBER (SEE LINE TABLE)	BY	BACKFLOW PREVENTOR	ALTA	AMERICAN LAND TITLE ASSOCIATION
12	CENTER MARK (SEE CENTER TABLE)	BY	BLOW OFF VALVE	AP	APPROPRIATE
13	RADIUS	BY	UNDERGROUND WATER MARKER	NT	NON-TAXED
14	CHORD BEARING	BY	IRIGATION VALVE	NAL & DISK	NATIONAL RECORDS BOOK
15	CHORD BEARING	BY	RISE WATER METER	ORSD	ORLANDO RECORDS BOOK
16	CHORD BEARING	BY	RISE WATER STUB OUT	OC	ORLANDO UTILITIES COMMISSION
17	CHORD BEARING	BY	RISE WATER STUB OUT	OCU	ORANGE COUNTY UTILITIES
18	CHORD BEARING	BY	ELECTRIC METER	PC	POINT OF COMMENCEMENT
19	CHORD BEARING	BY	ELECTRIC METER	PC	POINT OF COMMENCEMENT
20	CHORD BEARING	BY	ELECTRIC METER	PC	POINT OF COMMENCEMENT
21	CHORD BEARING	BY	ELECTRIC METER	PC	POINT OF COMMENCEMENT
22	CHORD BEARING	BY	ELECTRIC METER	PC	POINT OF COMMENCEMENT
23	CHORD BEARING	BY	ELECTRIC METER	PC	POINT OF COMMENCEMENT
24	CHORD BEARING	BY	ELECTRIC METER	PC	POINT OF COMMENCEMENT
25	CHORD BEARING	BY	ELECTRIC METER	PC	POINT OF COMMENCEMENT
26	CHORD BEARING	BY	ELECTRIC METER	PC	POINT OF COMMENCEMENT
27	CHORD BEARING	BY	ELECTRIC METER	PC	POINT OF COMMENCEMENT
28	CHORD BEARING	BY	ELECTRIC METER	PC	POINT OF COMMENCEMENT
29	CHORD BEARING	BY	ELECTRIC METER	PC	POINT OF COMMENCEMENT
30	CHORD BEARING	BY	ELECTRIC METER	PC	POINT OF COMMENCEMENT
31	CHORD BEARING	BY	ELECTRIC METER	PC	POINT OF COMMENCEMENT
32	CHORD BEARING	BY	ELECTRIC METER	PC	POINT OF COMMENCEMENT
33	CHORD BEARING	BY	ELECTRIC METER	PC	POINT OF COMMENCEMENT
34	CHORD BEARING	BY	ELECTRIC METER	PC	POINT OF COMMENCEMENT
35	CHORD BEARING	BY	ELECTRIC METER	PC	POINT OF COMMENCEMENT
36	CHORD BEARING	BY	ELECTRIC METER	PC	POINT OF COMMENCEMENT
37	CHORD BEARING	BY	ELECTRIC METER	PC	POINT OF COMMENCEMENT
38	CHORD BEARING	BY	ELECTRIC METER	PC	POINT OF COMMENCEMENT
39	CHORD BEARING	BY	ELECTRIC METER	PC	POINT OF COMMENCEMENT
40	CHORD BEARING	BY	ELECTRIC METER	PC	POINT OF COMMENCEMENT
41	CHORD BEARING	BY	ELECTRIC METER	PC	POINT OF COMMENCEMENT
42	CHORD BEARING	BY	ELECTRIC METER	PC	POINT OF COMMENCEMENT
43	CHORD BEARING	BY	ELECTRIC METER	PC	POINT OF COMMENCEMENT
44	CHORD BEARING	BY	ELECTRIC METER	PC	POINT OF COMMENCEMENT
45	CHORD BEARING	BY	ELECTRIC METER	PC	POINT OF COMMENCEMENT
46	CHORD BEARING	BY	ELECTRIC METER	PC	POINT OF COMMENCEMENT
47	CHORD BEARING	BY	ELECTRIC METER	PC	POINT OF COMMENCEMENT
48	CHORD BEARING	BY	ELECTRIC METER	PC	POINT OF COMMENCEMENT
49	CHORD BEARING	BY	ELECTRIC METER	PC	POINT OF COMMENCEMENT
50	CHORD BEARING	BY	ELECTRIC METER	PC	POINT OF COMMENCEMENT
51	CHORD BEARING	BY	ELECTRIC METER	PC	POINT OF COMMENCEMENT
52	CHORD BEARING	BY	ELECTRIC METER	PC	POINT OF COMMENCEMENT
53	CHORD BEARING	BY	ELECTRIC METER	PC	POINT OF COMMENCEMENT
54	CHORD BEARING	BY	ELECTRIC METER	PC	POINT OF COMMENCEMENT
55	CHORD BEARING	BY	ELECTRIC METER	PC	POINT OF COMMENCEMENT
56	CHORD BEARING	BY	ELECTRIC METER	PC	POINT OF COMMENCEMENT
57	CHORD BEARING	BY	ELECTRIC METER	PC	POINT OF COMMENCEMENT
58	CHORD BEARING	BY	ELECTRIC METER	PC	POINT OF COMMENCEMENT
59	CHORD BEARING	BY	ELECTRIC METER	PC	POINT OF COMMENCEMENT
60	CHORD BEARING	BY	ELECTRIC METER	PC	POINT OF COMMENCEMENT
61	CHORD BEARING	BY	ELECTRIC METER	PC	POINT OF COMMENCEMENT
62	CHORD BEARING	BY	ELECTRIC METER	PC	POINT OF COMMENCEMENT
63	CHORD BEARING	BY	ELECTRIC METER	PC	POINT OF COMMENCEMENT
64	CHORD BEARING	BY	ELECTRIC METER	PC	POINT OF COMMENCEMENT
65	CHORD BEARING	BY	ELECTRIC METER	PC	POINT OF COMMENCEMENT
66	CHORD BEARING	BY	ELECTRIC METER	PC	POINT OF COMMENCEMENT
67	CHORD BEARING	BY	ELECTRIC METER	PC	POINT OF COMMENCEMENT
68	CHORD BEARING	BY	ELECTRIC METER	PC	POINT OF COMMENCEMENT
69	CHORD BEARING	BY	ELECTRIC METER	PC	POINT OF COMMENCEMENT
70	CHORD BEARING	BY	ELECTRIC METER	PC	POINT OF COMMENCEMENT
71	CHORD BEARING	BY	ELECTRIC METER	PC	POINT OF COMMENCEMENT
72	CHORD BEARING	BY	ELECTRIC METER	PC	POINT OF COMMENCEMENT
73	CHORD BEARING	BY	ELECTRIC METER	PC	POINT OF COMMENCEMENT
74	CHORD BEARING	BY	ELECTRIC METER	PC	POINT OF COMMENCEMENT
75	CHORD BEARING	BY	ELECTRIC METER	PC	POINT OF COMMENCEMENT
76	CHORD BEARING	BY	ELECTRIC METER	PC	POINT OF COMMENCEMENT
77	CHORD BEARING	BY	ELECTRIC METER	PC	POINT OF COMMENCEMENT
78	CHORD BEARING	BY	ELECTRIC METER	PC	POINT OF COMMENCEMENT
79	CHORD BEARING	BY	ELECTRIC METER	PC	POINT OF COMMENCEMENT
80	CHORD BEARING	BY	ELECTRIC METER	PC	POINT OF COMMENCEMENT
81	CHORD BEARING	BY	ELECTRIC METER	PC	POINT OF COMMENCEMENT
82	CHORD BEARING	BY	ELECTRIC METER	PC	POINT OF COMMENCEMENT
83	CHORD BEARING	BY	ELECTRIC METER	PC	POINT OF COMMENCEMENT
84	CHORD BEARING	BY	ELECTRIC METER	PC	POINT OF COMMENCEMENT
85	CHORD BEARING	BY	ELECTRIC METER	PC	POINT OF COMMENCEMENT
86	CHORD BEARING	BY	ELECTRIC METER	PC	POINT OF COMMENCEMENT
87	CHORD BEARING	BY	ELECTRIC METER	PC	POINT OF COMMENCEMENT
88	CHORD BEARING	BY	ELECTRIC METER	PC	POINT OF COMMENCEMENT
89	CHORD BEARING	BY	ELECTRIC METER	PC	POINT OF COMMENCEMENT
90	CHORD BEARING	BY	ELECTRIC METER	PC	POINT OF COMMENCEMENT
91	CHORD BEARING	BY	ELECTRIC METER	PC	POINT OF COMMENCEMENT
92	CHORD BEARING	BY	ELECTRIC METER	PC	POINT OF COMMENCEMENT
93	CHORD BEARING	BY	ELECTRIC METER	PC	POINT OF COMMENCEMENT
94	CHORD BEARING	BY	ELECTRIC METER	PC	POINT OF COMMENCEMENT
95	CHORD BEARING	BY	ELECTRIC METER	PC	POINT OF COMMENCEMENT
96	CHORD BEARING	BY	ELECTRIC METER	PC	POINT OF COMMENCEMENT
97	CHORD BEARING	BY	ELECTRIC METER	PC	POINT OF COMMENCEMENT
98	CHORD BEARING	BY	ELECTRIC METER	PC	POINT OF COMMENCEMENT
99	CHORD BEARING	BY	ELECTRIC METER	PC	POINT OF COMMENCEMENT
100	CHORD BEARING	BY	ELECTRIC METER	PC	POINT OF COMMENCEMENT



DRAWING CS-16-212(B1)	PREPARED FOR:  <b>Tavistock East Services, LLC</b>	<b>DONALD W. McINTOSH ASSOCIATES, INC.</b> ENGINEERS PLANNERS SURVEYORS 1950 SUMMIT PARK DRIVE SUITE 600 ORLANDO, FLORIDA 32810 (407) 644-4068 CERTIFICATE OF AUTHORIZATION NO. LB88	NO. DATE		REVISIONS	CHK.
			NO. DATE		REVISIONS	CHK.
SHEET <b>11 of 11</b>	SUNBRIDGE ORANGE COUNTY PARCEL N-6	DRAWN BY: CAA DATE: 08/26/24 CHECKED BY: RLC FIELD BOOKS: 1419 SCALE: 1"=50' JOB NUMBER: 24607.001	NO. DATE REVISIONS CHK.			

Printed: Tue 15-06-2024 - 08:09AM  
 P:\Projects\15252\Sunbridge\Map\16-212(B1) ALTA-NPS SUNBRIDGE N6 PARCEL.dwg