

International Corporate Park
GMP amendments and zoning to Planned Development

GMP2024-10012; GMP2024-10013; ZON2024-10010

MTG2024-10398

ICP- International Corporate Park-14850 Aerospace Pkwy- ±370 acres (City Initiated)

- GMP2024-10012 ICP-Change the Future Land Use designation from Orange County’s Industrial (IND) designation to the City’s Industrial (INDUST) and Conservation (CONSERV).
- GMP2024-10013 Amendment to Growth Management Plan to create a new subarea policy S.41.2 for the development program of the International Corporate Park.
- ZON2024-10010 Establishing an initial zoning of Planned Development (PD) for the ICP area.

Subarea Policy 41.2 – Language proposed

1. The maximum development program of this area shall be as follows:
Industrial Uses= 3,107,900 sq. ft.

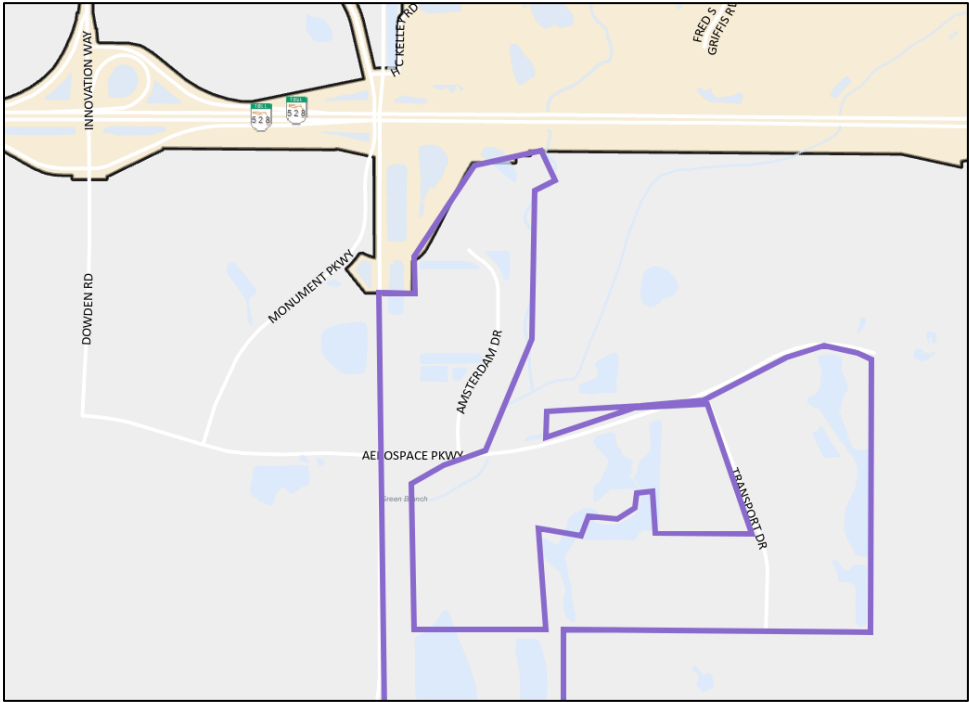
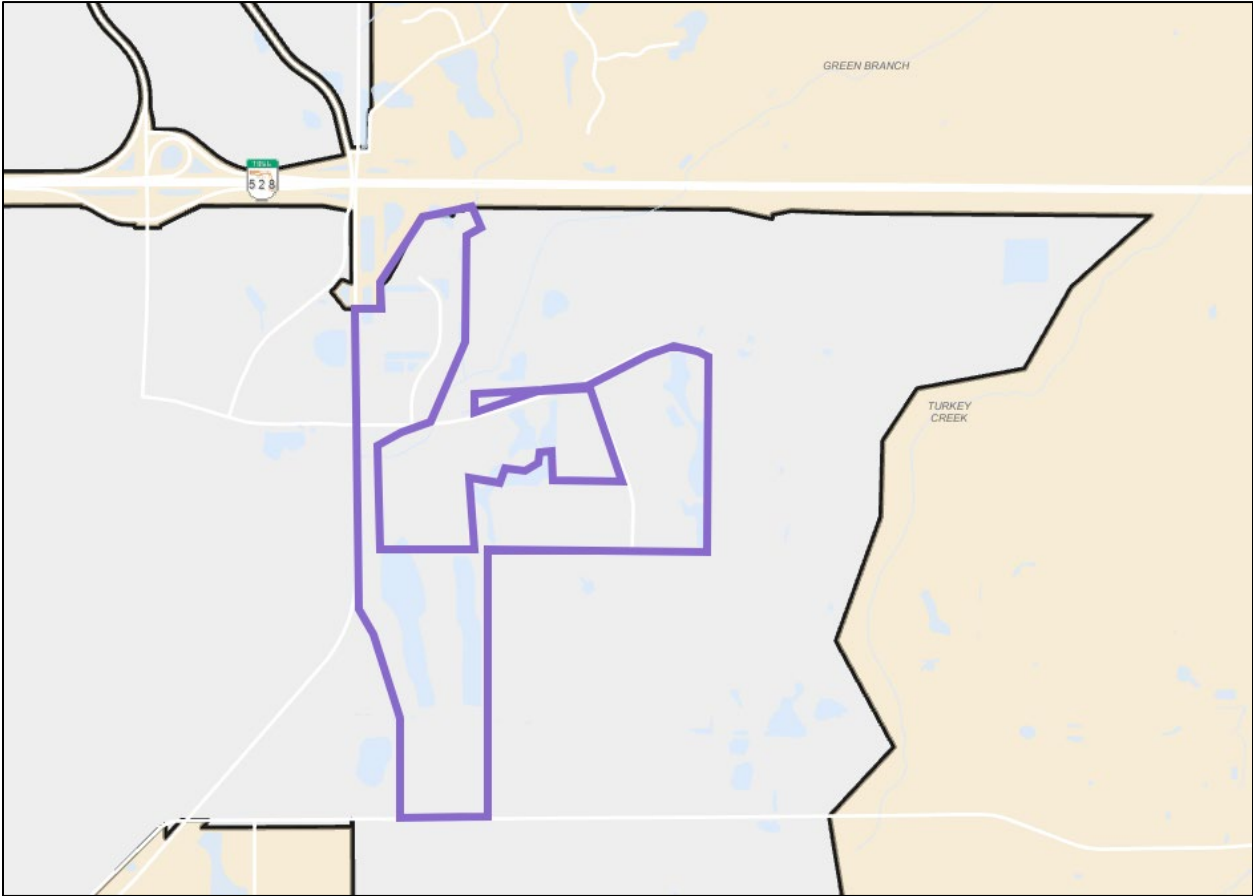
2. Any increase in development capacity over 20%, beyond that allowed by this subarea policy shall require a GMP amendment and shall be supported by data and analysis that demonstrates adequate public facilities or services are available to accommodate the proposed density and intensity of development.

3. Prior to development, a Planned Development ordinance (PD) that addresses the entire land area and maximum development program shall be reviewed and approved by the City Council. The PD must address the following:
 - a. Natural Features. Natural features must be treated as amenities.
 - b. Transportation System-The proposed roadway network must conform to the City of Orlando’s Major Thoroughfare Plan, as may be amended from time to time.

4. Any proposed development within identified environmentally sensitive areas shall be coordinated with all government agencies to minimize adverse impacts.

Orange County	City- Proposed
FLU= Industrial	FLU= Industrial (INDUST) and (CONSERV)
ZON= PD ICP	ZON= Planned Development (PD)

Location Map



Aerial

