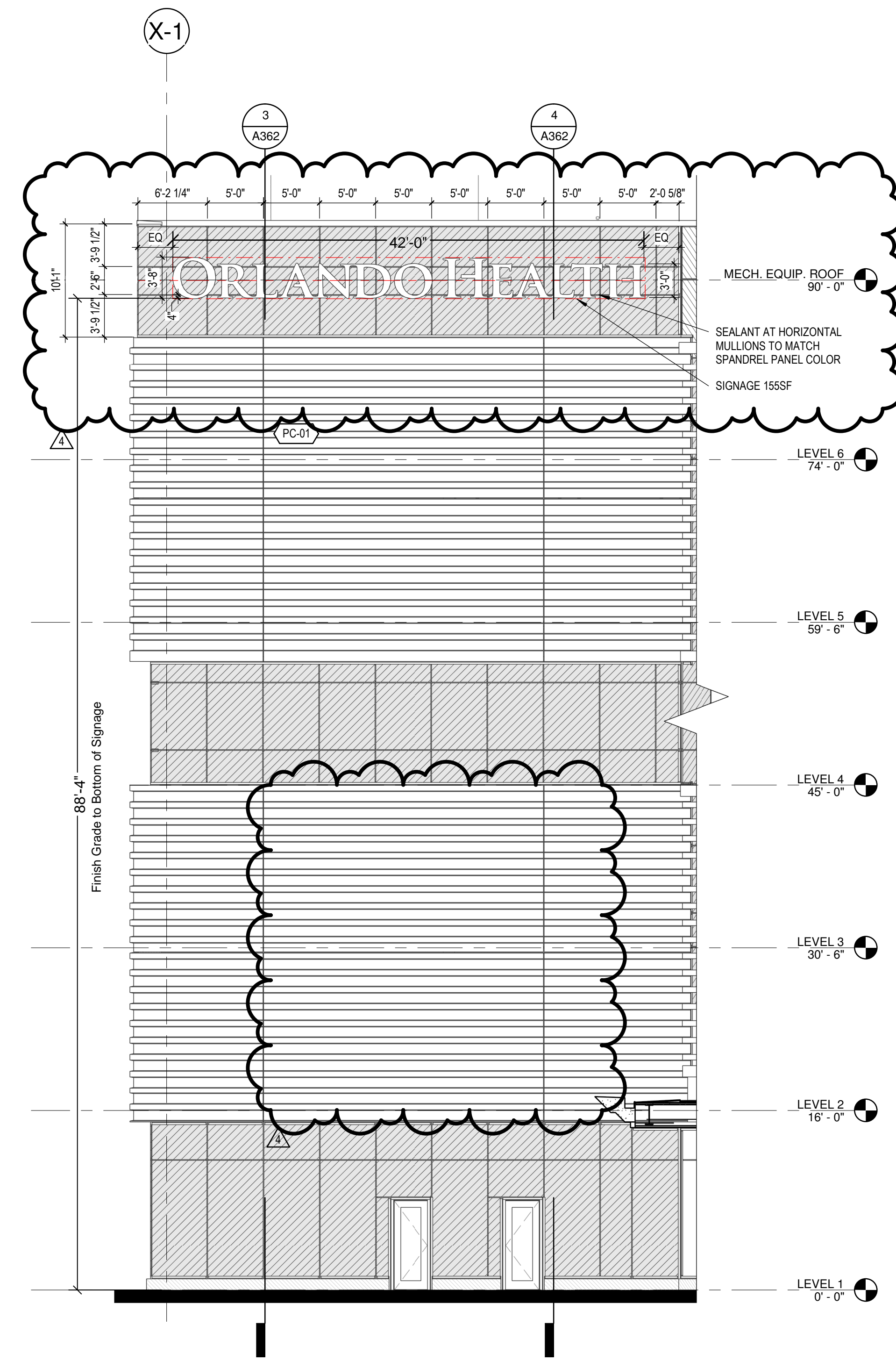
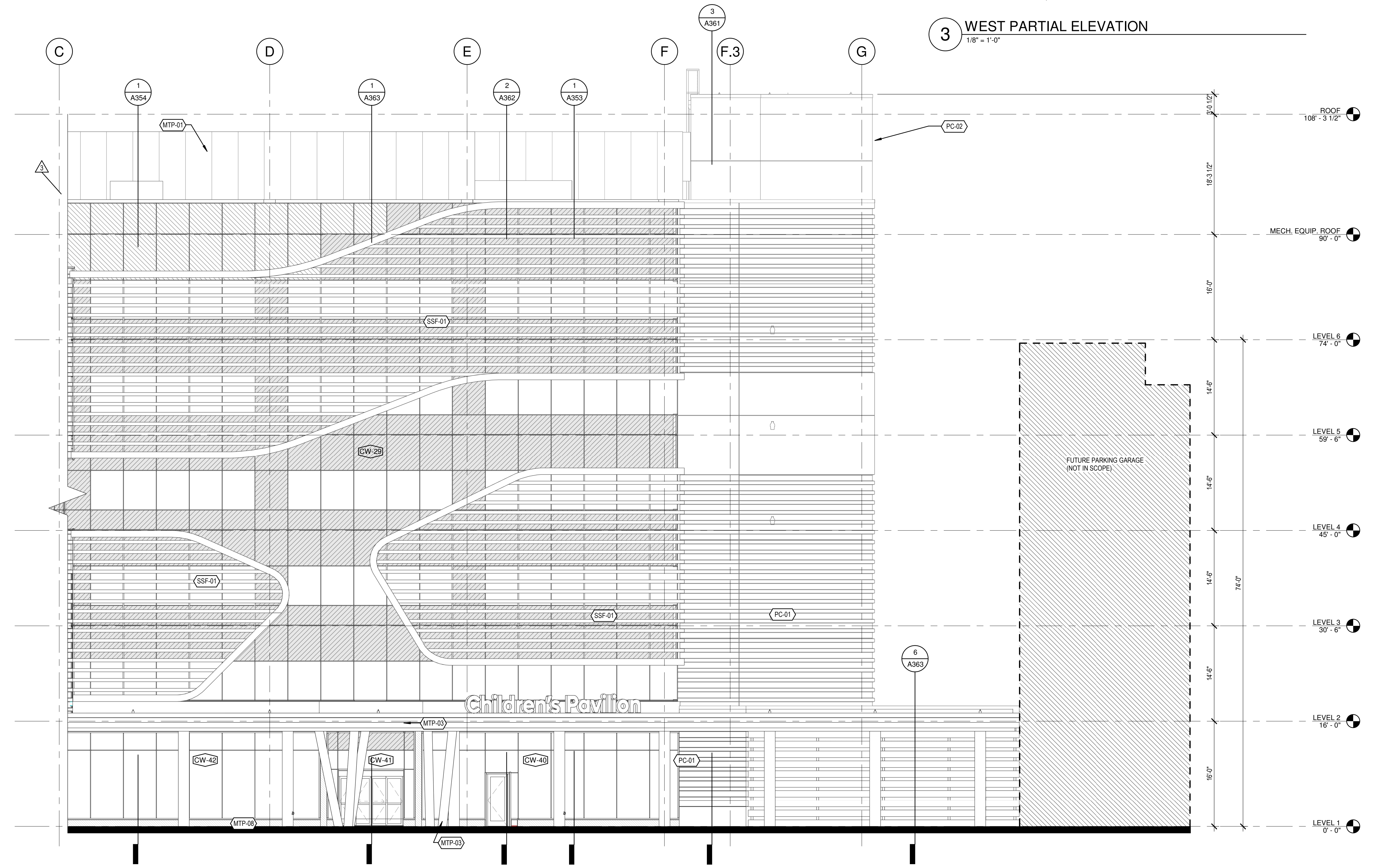




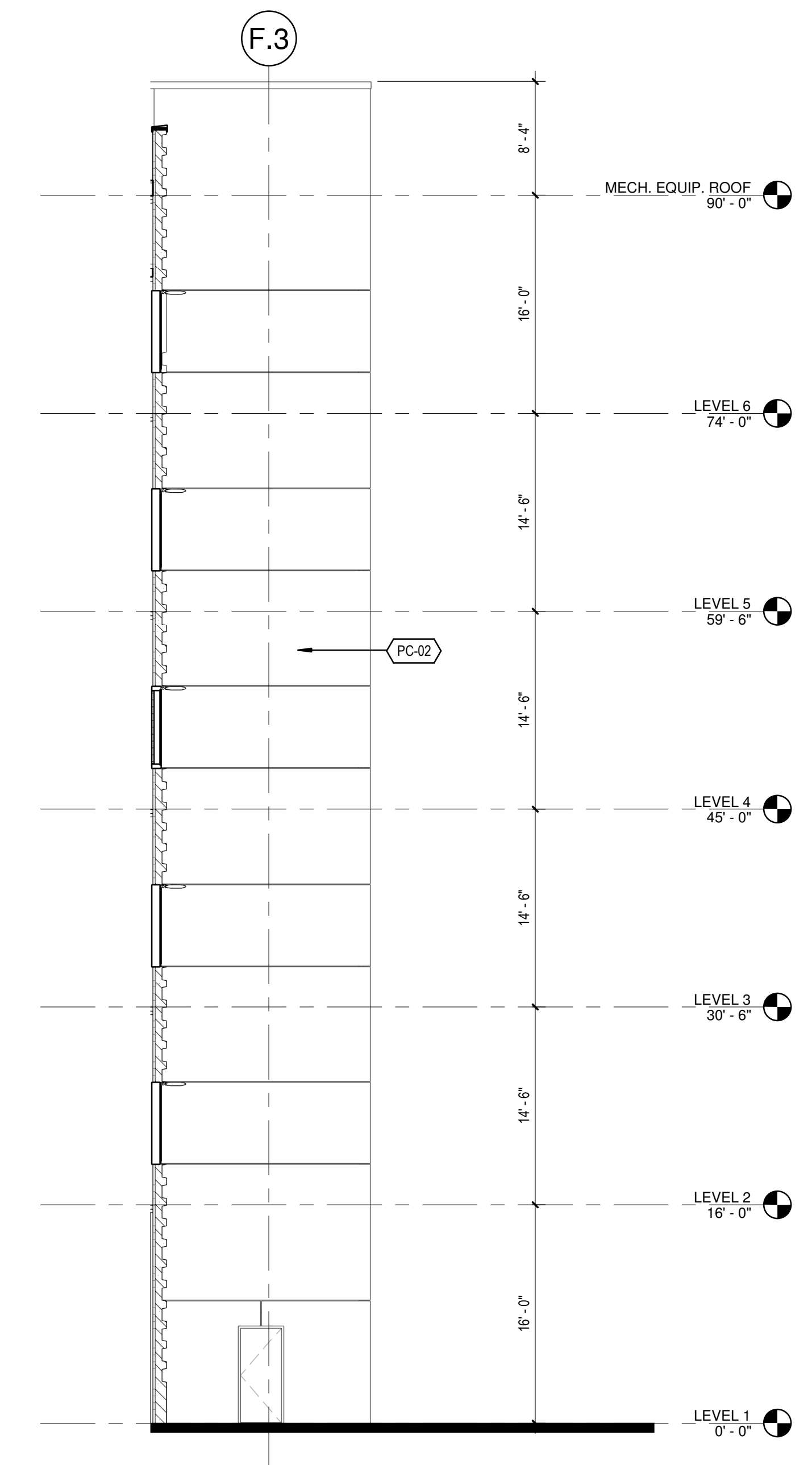
4 WEST ELEVATION VIEW  
NTS



2 SOUTH WEST ELEVATION  
1/8" = 1'-0"



1 WEST ELEVATION  
1/8" = 1'-0"



3 WEST PARTIAL ELEVATION  
1/8" = 1'-0"

**ELEVATIONS LEGEND**

|  |                                       |  |                                      |
|--|---------------------------------------|--|--------------------------------------|
|  | RIBBED PRECAST ARCHITECTURAL CONCRETE |  | GL-04 SPANDREL GLASS - FRITTED       |
|  | GL-01 VISION GLASS - CLEAR            |  | GL-05 PRIVACY GLASS - W/ SILK SCREEN |
|  | GL-02 SPANDREL GLASS                  |  | GL-06 VISION GLASS - MID-IRON        |
|  | GL-03 VISION GLASS - FRITTED          |  |                                      |

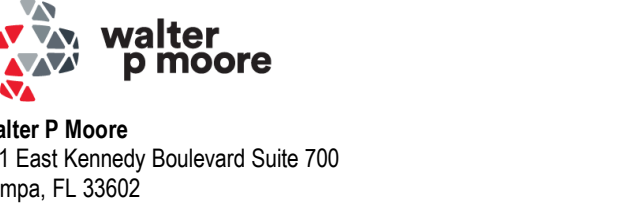
**KEY NOTES**

|   |   |
|---|---|
| CWS-01 ALUMINUM CURTAIN WALL SYSTEM WITH INSULATED GLASS UNITS - PPG UC106705XL STEEL CITY SILVER | MTP-01 METAL PANEL SCREEN WALL SYSTEM - PPG UC54983 COLONIAL WHITE  |
| MTP-02 METAL PLATE PANEL SYSTEM - PPG UC54983 COLONIAL WHITE                                      | MTP-03 METAL PLATE PANEL SYSTEM - PPG STEEL CITY SILVER UC 106705XL |
| PC-01 PRECAST ARCHITECTURAL CONCRETE - ALABASTER  | PC-02 PRECAST ARCHITECTURAL CONCRETE - DORIAN GRAY                  |
| SSF-01 ALUMINUM BRISE SOLEIL SUN SHADING SYSTEM - PPG UC54983 COLONIAL WHITE                      |   |



Hellmuth, Obata & Kassabaum, Inc.  
One Tampa City Center, Suite 1800  
Tampa, FL 33602 USA  
T: +1 813 229 0300  
www.hok.com/studios/tampa  
FL Registration No. AR52342

All reproductions without written permission are prohibited.  
© 2024  
In Association with:



Walter P Moore  
201 East Kennedy Boulevard Suite 700  
Tampa, FL 33602



ATLC Engineering Solutions  
265 S. Orange Ave, Suite 1600  
Orlando, FL 32801



HARRIS  
Harris Civil Engineers, LLC  
Harris Civil Engineers, LLC  
700 Hilcrest Street, Suite 200  
Orlando, FL 32803  
EB8914



conner  
landscape architects  
Conner Landscape Architects  
P.O. Box 246965  
Tampa, FL 33694



Cripe  
Solutions by Design Since 1937  
Cripe  
1539 Priority Way West Drive, Suite 100  
Indianapolis, IN 46240

Key Plan

Professional Seals

| No. | Description            | Date       |
|-----|------------------------|------------|
| 1   | ISSUED FOR PERMIT      | 03/15/2024 |
| 2   | CONSTRUCTION DOCUMENTS | 06/01/2024 |
| 3   | ADDENDUM #1            | 06/04/2024 |
| 4   | ADDENDUM #2            | TBD        |