

ANTHEMNET COMMUNITY MEETING MINUTES
Meridian Parks Tower “Boggy Meridian”
December 14, 2023 – 6:00 P.M. – via Zoom



Neighborhood Meeting
Meridian Parks Tower

ANTHEM COMMUNICATIONS GROUP CONFIDENTIAL

Anthemnet - Jennifer Frost – Started Meeting and Introduced Commissioner Jim Gray.

City Commissioner Jim Gray – Spoke about the purpose of the meeting, that is it not a vote and is informational only. The Applicant is here to explain the project and to answer any questions.

Project Overview “Boggy Meridian”



Location: Dowden Road, Orlando, FL

Tower: 150' Monopine-type Stealth Wireless Communications Facility

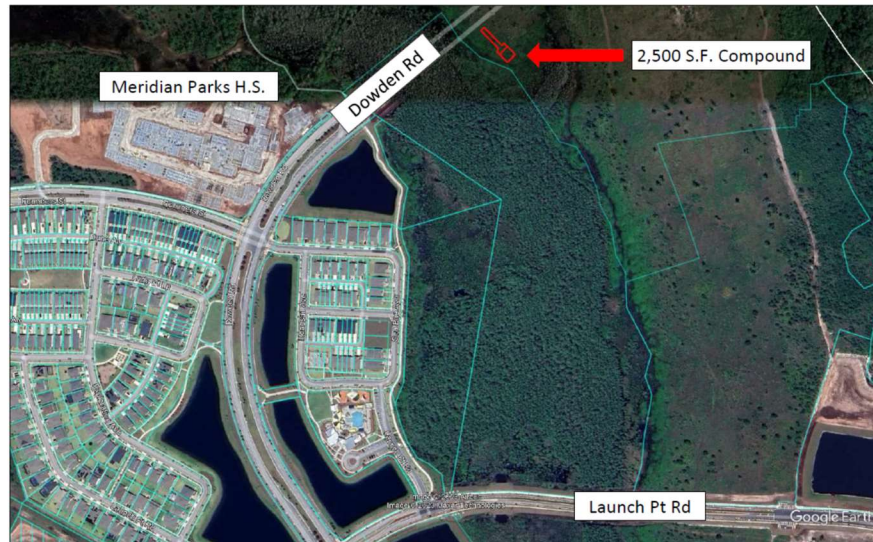
Premises: 2,500 square-foot compound surrounded by fencing

Collocation: Verizon Wireless is the anchor tenant, and the Tower will be able to accommodate AT&T, T-Mobile, DISH, and any future wireless provider

ANTHEM COMMUNICATIONS GROUP CONFIDENTIAL

Anthemnet - Jennifer Frost – Introduced Anthemnet (headquartered in Dallas, but she is the local project manager). Anthemnet works with all the wireless carriers (Verizon Wireless, AT&T, T-Mobile and DISH). We are proposing a 150-foot monopine within a 2,500 square-foot compound, and it will be available to all carriers for collocation.

Aerial Overview



ANTHEM COMMUNICATIONS GROUP CONFIDENTIAL

Anthemnet - Jennifer Frost – Showed slide with view from GoogleEarth, which imagery has not been completely updated to show entire high school. Explained the location in relation to local roads (Launch Point Road & future Dowden Road) and the conservation area. Pointed out 50' by 50' compound location on parent parcel.

Photo Simulation Map – View 1



ANTHEM COMMUNICATIONS GROUP CONFIDENTIAL

View 1 – State Road 528 – looking south



ANTHEM COMMUNICATIONS GROUP CONFIDENTIAL

Anthemnet - Jennifer Frost – This view is from Beachline Expressway, approximately one-half mile away, and the arrow is pointing to the 150 foot tower.

Photo Simulation Map – View 2



ANTHEM COMMUNICATIONS GROUP CONFIDENTIAL

View 2 – Dowden Road – looking northeast



ANTHEM COMMUNICATIONS GROUP CONFIDENTIAL

Anthemnet - Jennifer Frost – The next viewpoint is near the end of the current Dowden Road, looking to the northeast, approximately one-eighth of a mile away, behind the conservation area.

Photo Simulation Map – View 3



ANTHEM COMMUNICATIONS GROUP CONFIDENTIAL

View 3 – Dune Alley



ANTHEM COMMUNICATIONS GROUP CONFIDENTIAL

Anthemnet - Jennifer Frost – View three was taken from the neighborhood, Dune Alley, approximately one-quarter mile away.

Photo Simulation Map – View 4



ANTHEM COMMUNICATIONS GROUP CONFIDENTIAL

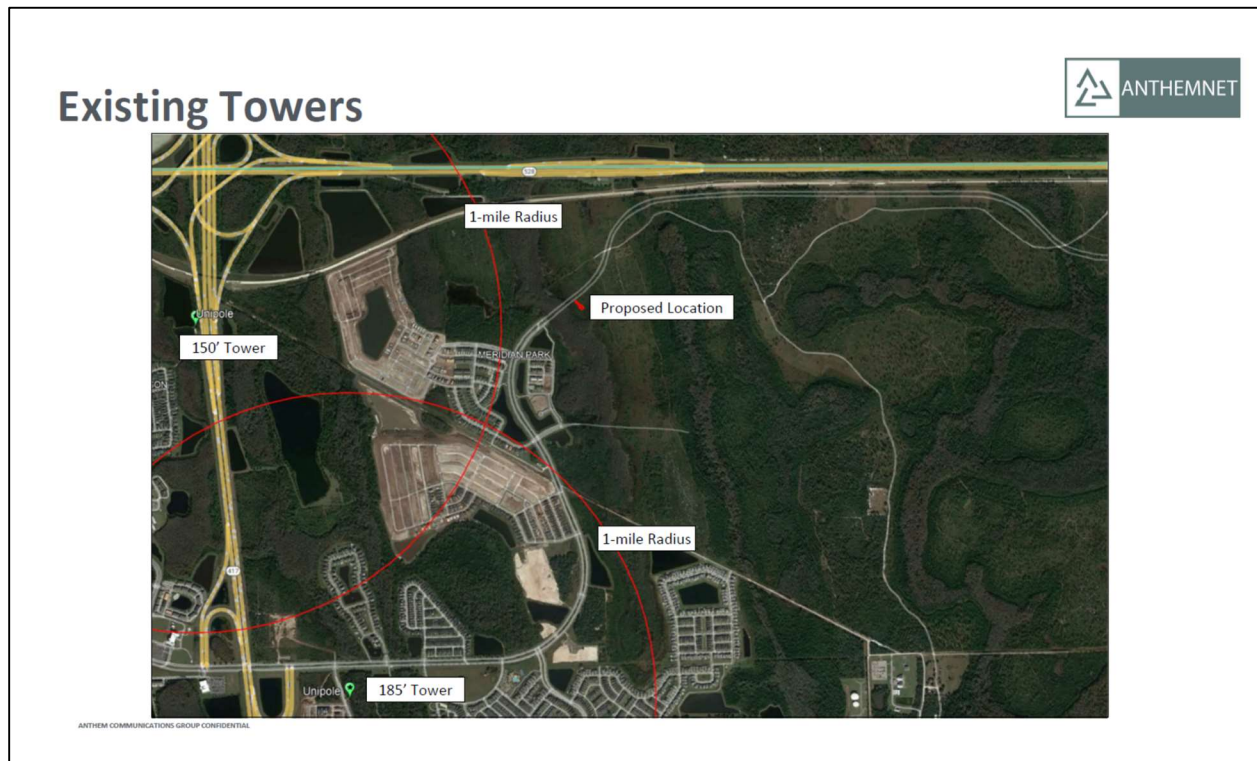
View 4 – Dowden Road and Launch Point Road



ANTHEM COMMUNICATIONS GROUP CONFIDENTIAL

Anthemnet - Jennifer Frost – The final view is from Launch Point Road and Dowden Road, looking north from just under a half mile away.

Anthemnet - Jennifer Frost – Asked everyone to write their name, address, and phone number in the comments along with any questions.



Anthemnet - Jennifer Frost – Showed this slide explaining the need for the tower. The proposed location is 1.25 miles away from 150' tower to the west and 1.5 miles from the 185' tower to the south. In this area, the towers are over a mile away. More residential is coming to this area along with the high school. Current traffic along 417 is about 65,000 average daily trips, and then the current traffic on Beachline expressway is roughly 69,000 average daily trips. The next closest tower to the east is not on the map because it's about three miles away.

Anthemnet - Jennifer Frost – Concluded Slide Presentation and opened the floor to questions.

Resident David Grau – Mentioned there is a Facebook group with a lot of residents in the neighborhood that are generally opposed to or have concerns about the tower. Has conducted research about how towers impact communities, including health level and visual aspects. Stated there is a negative correlation between proximity of towers and home values. Requested to know how Anthemnet picked this location, given a high school within 1,000 feet and potential health impacts on students.

Anthemnet - Jennifer Frost – Stated there is a need for capacity and coverage in this area with amount of population growth. The location was determined based on the carrier's need, the availability of two landowners, and future development. The location on the parcel is close to conservation to conceal the tower. The tower and carriers are regulated by FCC Guidelines. Towers have a negligible impact on property values and people want more reliable indoor coverage to work from home.

Resident David Grau – Stated he has found hundreds of research articles from many countries that show an elevation in cancer rates when being within a quarter-mile of a tower. Restated concerns about a tower being close to a high school and their potential exposure to radiofrequency emissions. Stated the FCC has outdated regulations from 20 years ago, and other first-world countries have more stringent regulations.

Anthemnet - Jennifer Frost – Stated she has not reviewed the data David Grau found. Mentioned Pasco County School Board installs towers at schools and has done a before-and-after study of radiofrequency emissions, which showed a negligible difference.

Resident David Grau – Spoke that science is ever-changing and updating, and he has concerns about the tower being so close to community and the students. He requested that Anthemnet finds a different location one-half mile away. Requested that Anthemnet provide coverage maps and consider alternative locations for the community to consider.

Anthemnet - Jennifer Frost – Stated there are two landowners in this area of need, and the tower was sited based on available land, wetlands and conservation, and future development of residential and commercial.

Resident Carlos – Stated he is a resident and “seconded” David’s questions and concerns. Mentioned the FCC guidelines are outdated and more research is needed about health effects. Stated the residents were not provided enough notice for the informational meeting and asked about future meetings.

Anthemnet - Jennifer Frost – The City of Orlando asked Anthemnet to hold an informational meeting prior to the conditional use application submittal. Once submitted, the application will go before the planning board. Notice was provided per the City of Orlando’s guidelines, but future notification can be sent to the HOA.

Resident Carlos – Asked if a different location could be considered.

Anthemnet - Jennifer Frost – Showed “Existing Towers” slide and explained the available land is somewhat constrained by conservation and wetlands – along with future development. The carriers also have optimal location parameters to fit into existing network.

Resident Carlos – Wanted to clarify the radii shown were one mile.

Anthemnet - Jennifer Frost – Reiterated traffic counts on 417 and 528, the amount of existing residential, the high school under construction, along with future development. It then becomes not only a coverage issue, but also a capacity issue, which may not be completely evident today.

Resident Carlos – Asked for more information on the hearings and notice.

Anthemnet - Jennifer Frost – Anthemnet intends to submit the application for a Tuesday, February 20th, 8:30 A.M. hearing at City Hall.

Resident Carlos – Asked if the parents of the students of the high school have any voice in the matter, since they may not be nearby residents.

Anthemnet - Jennifer Frost – Stated it is a public hearing open to the general public, any interested party can attend to support or oppose. Asked Commissioner Gray to clarify, if needed.

Resident Gina Grau – Asked how many people need to oppose this location for Anthemnet to reassess the site.

Anthemnet - Jennifer Frost – Deferred to Commissioner Gray.

City Commissioner Jim Gray – Stated tonight in an informational meeting, and City Planning Staff is also attending. There may be a public hearing in February, and concerns are being noted. All happenings are posted on the District website, including all applications and public hearing dates. Anybody is welcome to attend.

Resident Alejandra Faggiolly – Asked for clarification on the timing and process of the application.

Anthemnet - Jennifer Frost – Explained Anthemnet has to file a Conditional Use Application with the City of Orlando that proves all Land Development Code requirements are met. Staff will then review and make a recommendation to the Planning Board. The intended meeting is February 20th at 8:30 A.M.

City Commissioner Jim Gray – Added on that the municipal planning board is a group of volunteers that makes a recommendation to the City Council based on the City Planning Staff's report. Then the City Council of six commissioners and the Mayor makes the final vote.

Resident Vincent – Asked about a microwave being installed on the proposed tower to communicate with the other existing towers in the area.

Anthemnet - Jennifer Frost – Anthemnet is designing the tower as a monopine with external branches at a height of 150 feet to communicate with the other towers.

Resident Vincent – Asked for further clarification on the microwave or fiber optics being used, as he has telecommunications experience. Voiced concerns about being so close to a high school and storm events affecting the tower.

Anthemnet - Jennifer Frost – Stated the intent is to use fiber optics, and the development already has a lot of infrastructure in place or is planned. Regarding hurricanes, the proposed tower will be designed to sustain maximum windspeeds from a structural standpoint, and generators and batteries will be installed for back-up power for E911 communications can stay active.

Resident Vincent – Posed one more concern about the generator and asked if it was possible to move the tower farther away from the High School, perhaps by the railway, for safety purposes.

Anthemnet - Jennifer Frost – Clarified the generator will not operate on a continuous basis. Asked Resident Vincent to clarify suggested area on map on "Existing Towers" slide. Anthemnet will review that location.

Resident Vincent – Asked for clarification on design.

Anthemnet - Jennifer Frost – Reiterated it will be a monopine design.

Resident Taylor Place – Pointed out his property on the map and mentioned he is the closest resident to the proposed tower. Stated he does not want a tower so close to his residence or in line-of-sight. Asked if Anthemnet could consider location closer to where Resident Vincent mentioned.

Anthemnet - Jennifer Frost – Stated the lot line is approximately 900 feet from the proposed tower and will be heavily buffered by the existing conservation easement. Regarding location, there are only two landowners in the area, and only one has been responsive. That landowner gave Anthemnet a location that worked for the wireless carrier.

Resident Taylor Place – Voiced concerns that a lot of the trees had been removed for the expansion of Dowden Road and he will have a clear view of the tower.

Anthemnet - Jennifer Frost – Asked all in attendance to write their name and email in the Comments section to send a list to the City.

Resident David Grau – Requested Jennifer post her email as an alternative.

Anthemnet - Jennifer Frost – Provided her email and phone number in case the residents had any further questions. Restated the potential February 20th Planning Board Meeting and the March City Commission Meeting (date TBD).

Meeting concluded around 6:47 P.M.