



# O-LINE

*SODO NID*  
*BOARD UPDATE*

[ October 14, 2020 ]



**TOOLE**  
DESIGN

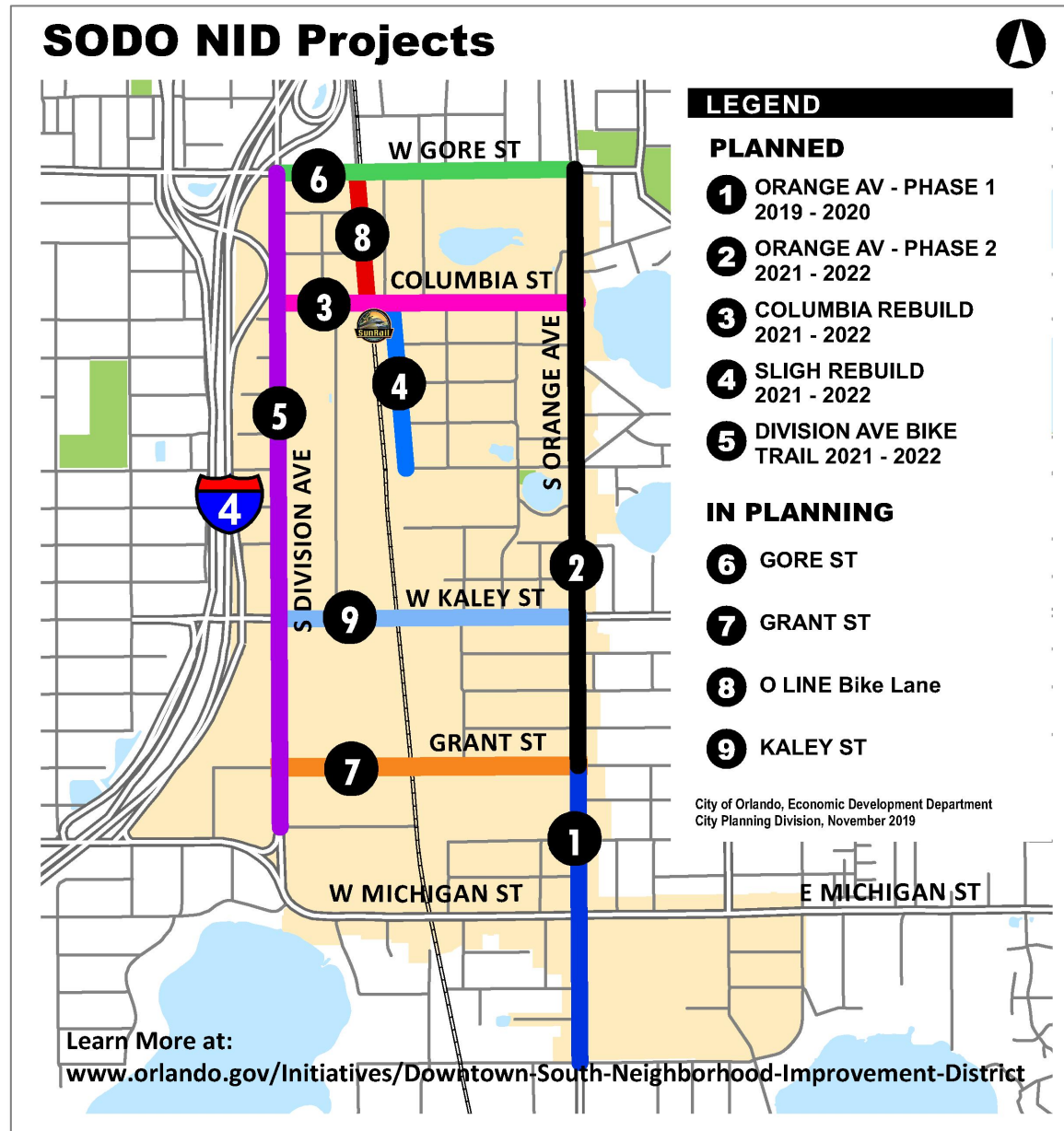




# Welcome

1. *Background*
2. *Context*
3. *Survey Response*
4. *Initial Phase Concept*
5. *Alignment Options*
6. *Questions/Discussions*

# Outline of District Projects



# Background



# Creating Synergies



## Industry

- Support existing successful businesses
- Provide safe access to properties
- Maintain the ability to move heavy equipment



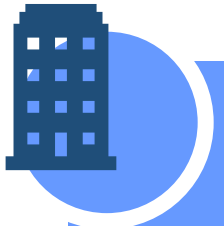
## Pedestrians

- Create an attractive, walkable place
- Establish safe crossings
- Increase foot traffic!
- Design Public Gathering Spaces



## Cyclist

- Design a Bike friendly corridor.
- Designate trail crossings and connections



## Development

- New development
- Improvements to existing development
- Opportunity for redevelopment



## Vehicular

- Improve circulation
- Provide on-street parking
- Calm traffic

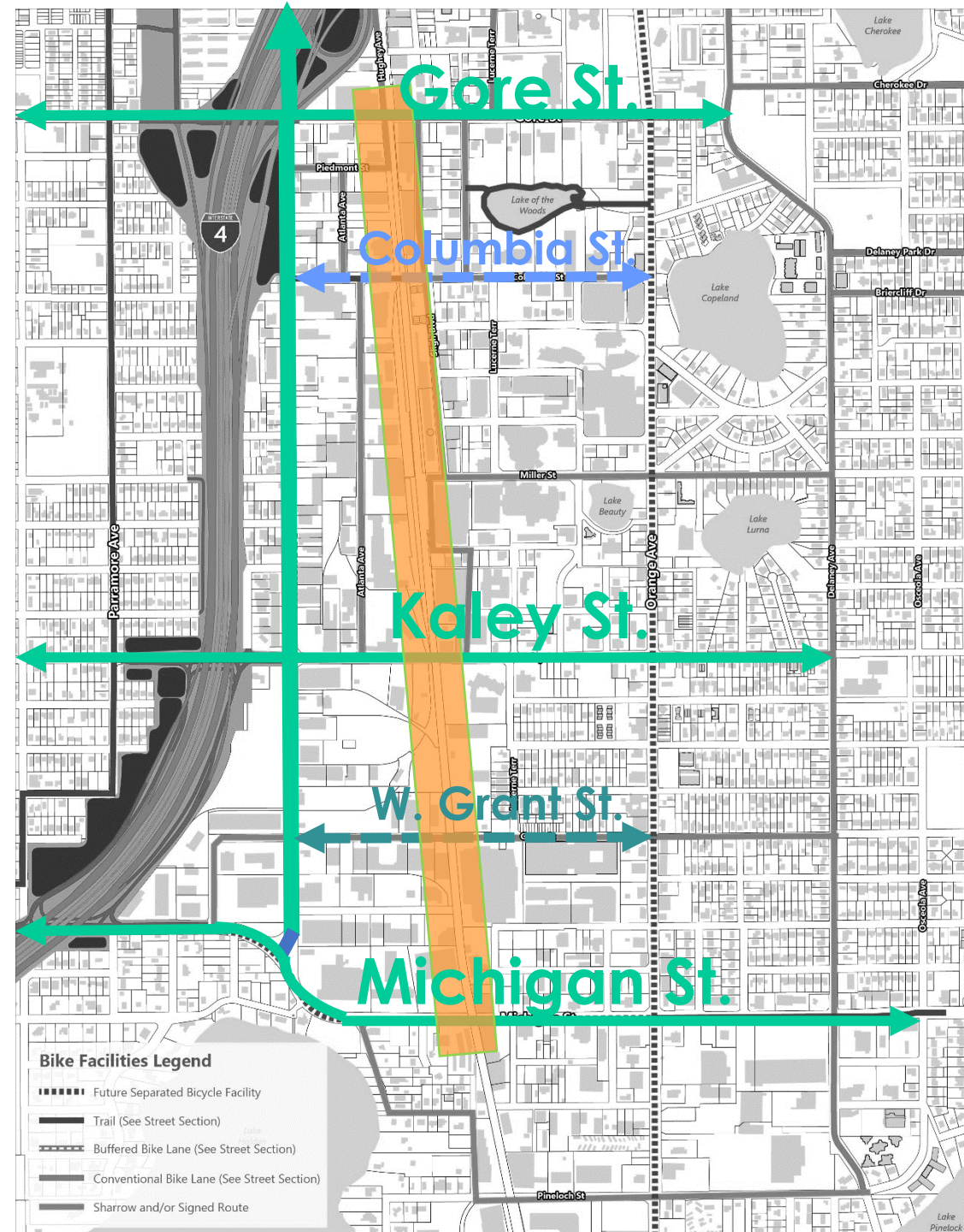


## Enhancements

- Wayfinding
- Public art
- Pedestrian lighting
- Street furnishings
- Unified landscape

# O-Line Support

- *Connectivity*
- *Common Space*
- *Stormwater*
- *Open Space*
- *Some City Owned R/W*
- *Design Guideline for Future Redevelopment*
- *Phasing over time*



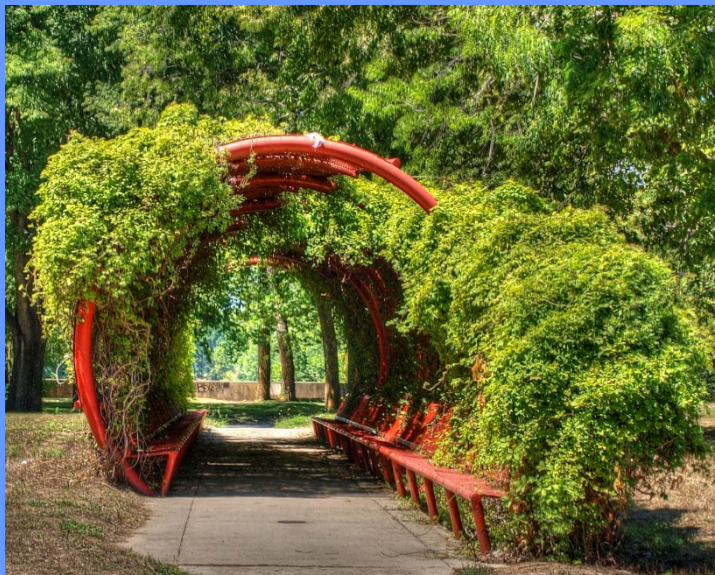


To see the forest from the trees



Orlando Downtown South Neighborhood Improvement District (DNSID)

















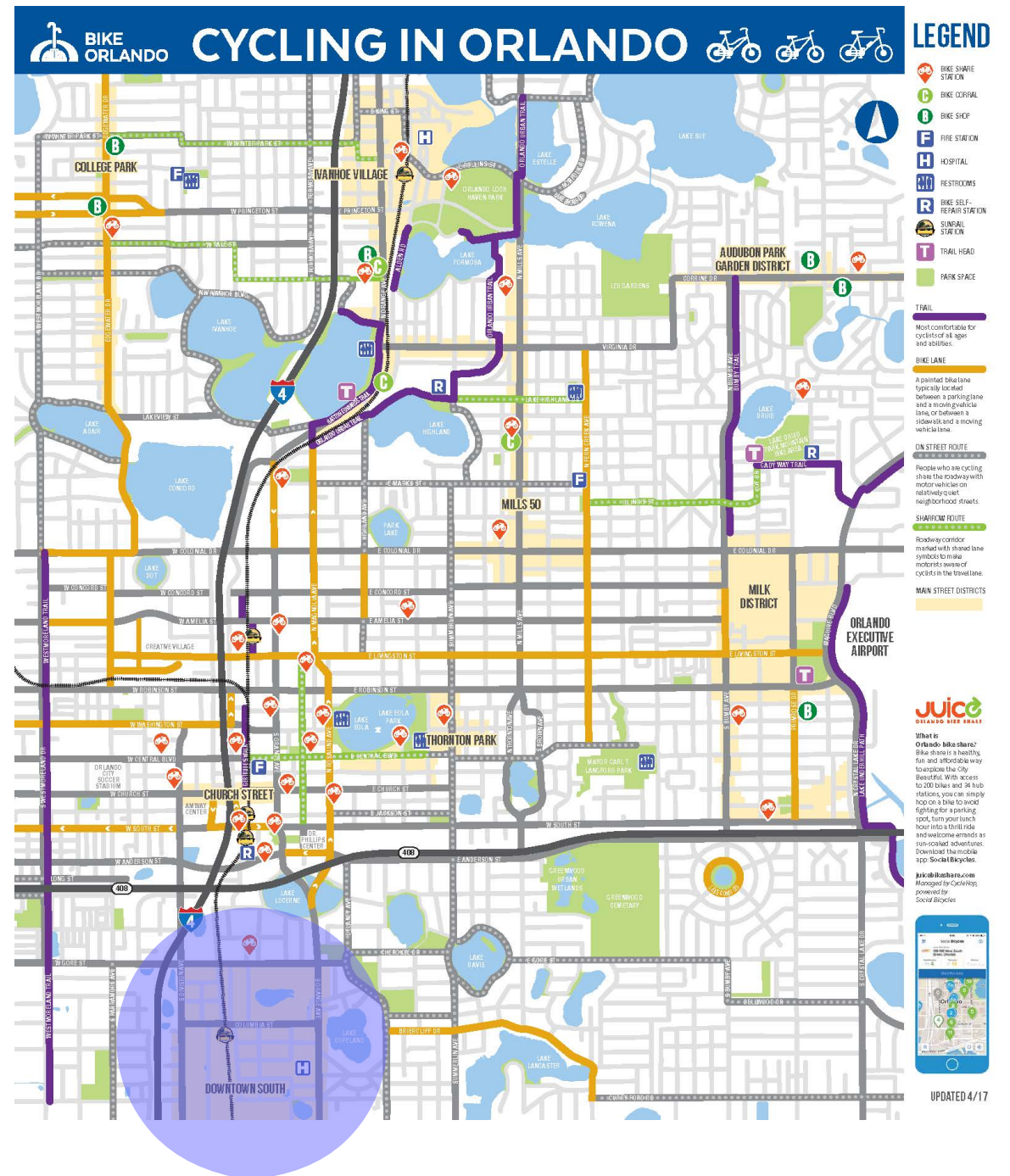


# Context

# Trail Design

## CITY OF ORLANDO CYCLING

- Over 46 miles of off-street trails citywide
- High priority to connect to Downtown Orlando through protected bicycle infrastructure to surrounding districts
- Gertrude's Walk and Colonial Overpass projects currently under construction
- Bicycle connectivity from SoDo to the CBD is needed

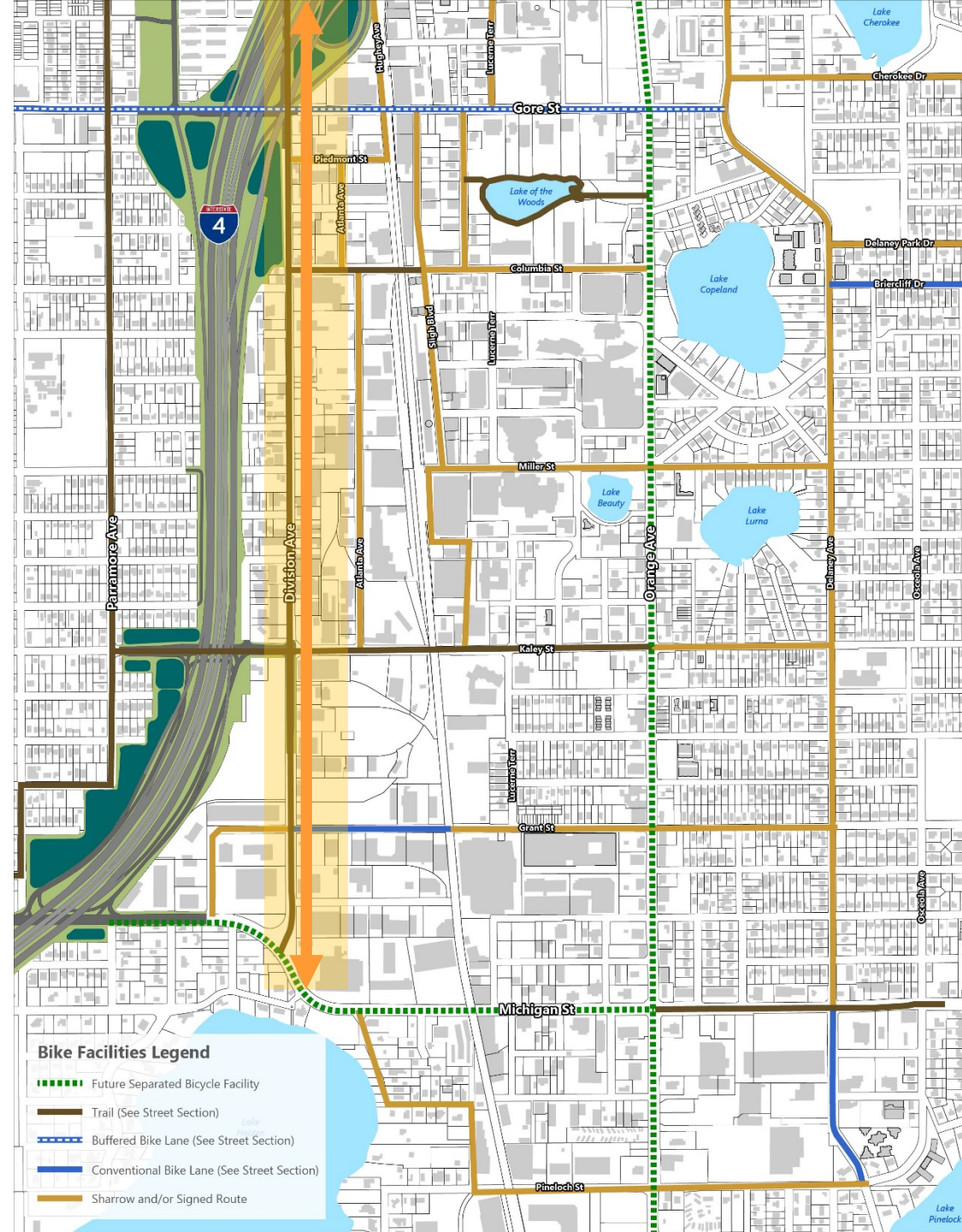
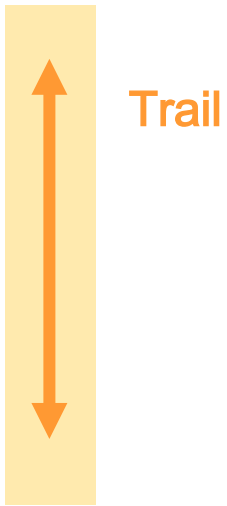




# Bike/Ped Improvements

## DOWNTOWN CENTRAL TRAIL

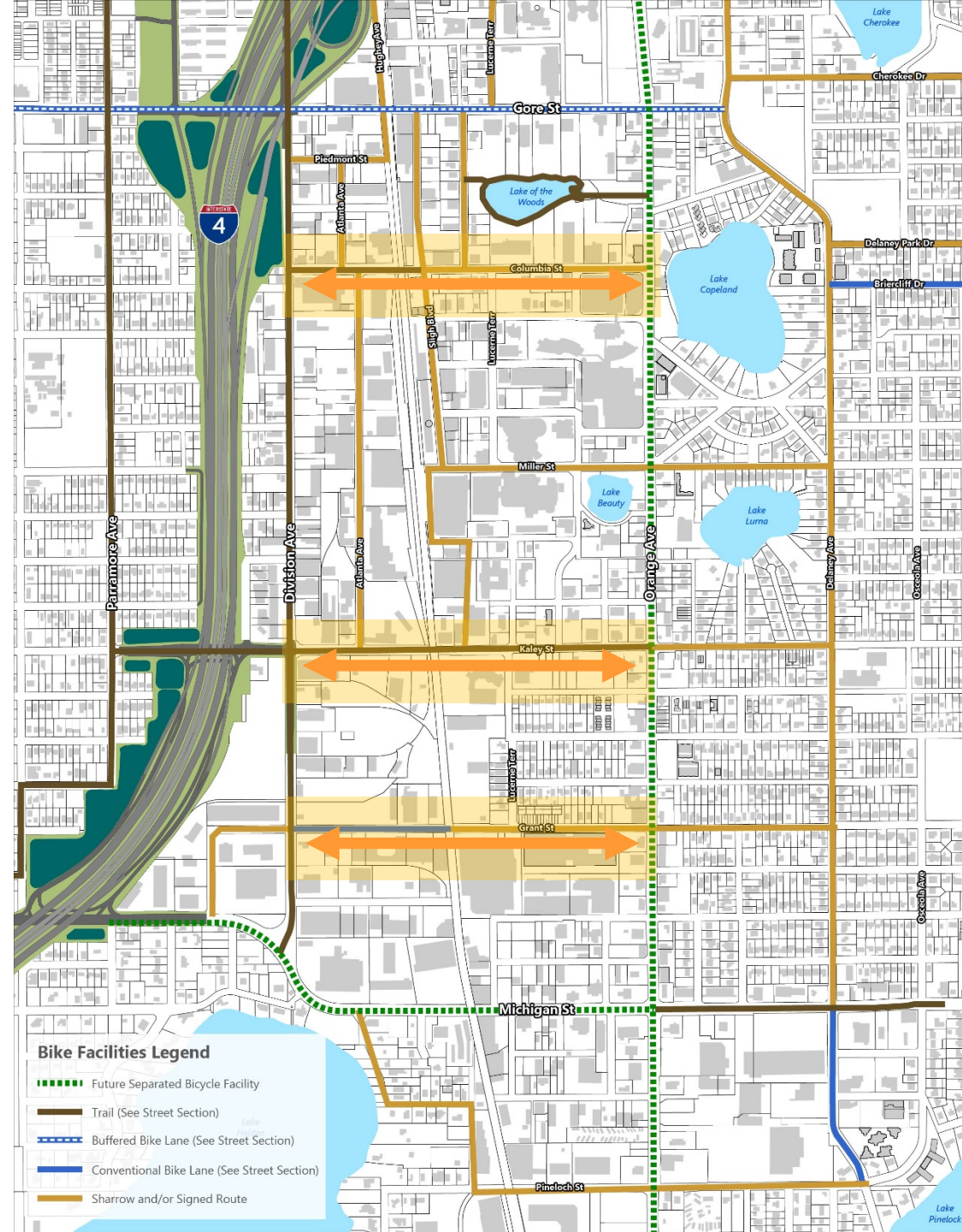
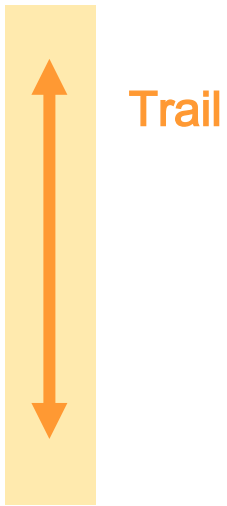
The Division Avenue Complete Street Plan will include the alignment of 1.3 miles of the Downtown Central Trail



# Bike/Ped Improvements

## East/West Streets

*Pedestrian/Bicycle infrastructure improvements are planned on Columbia Street, Kaley Street and Grant Street*

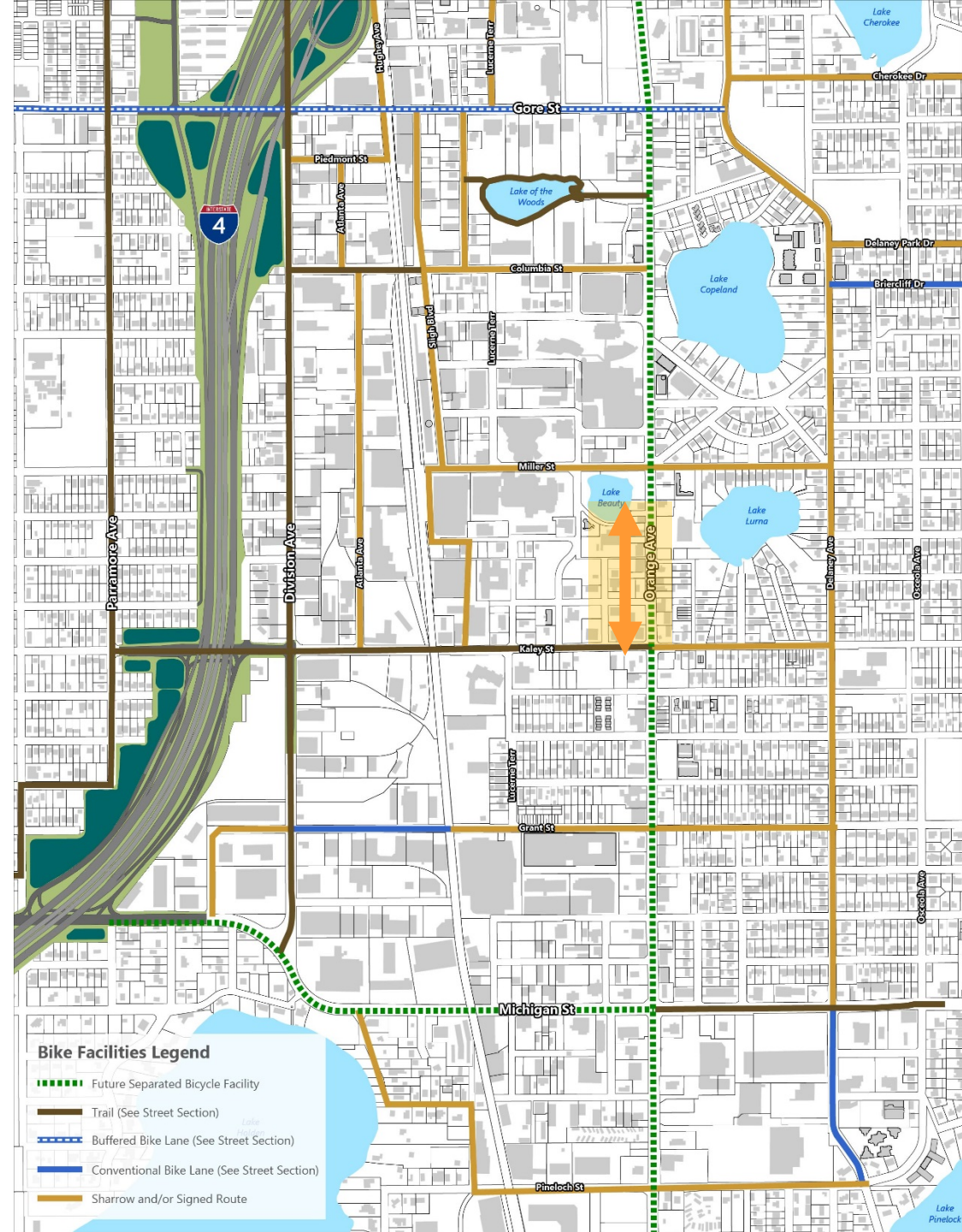
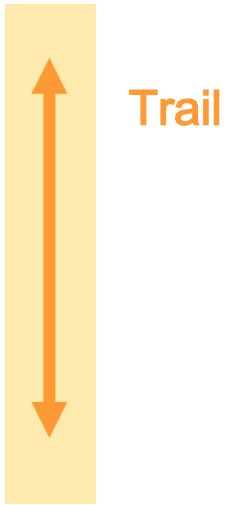




# Bike/Ped Improvements

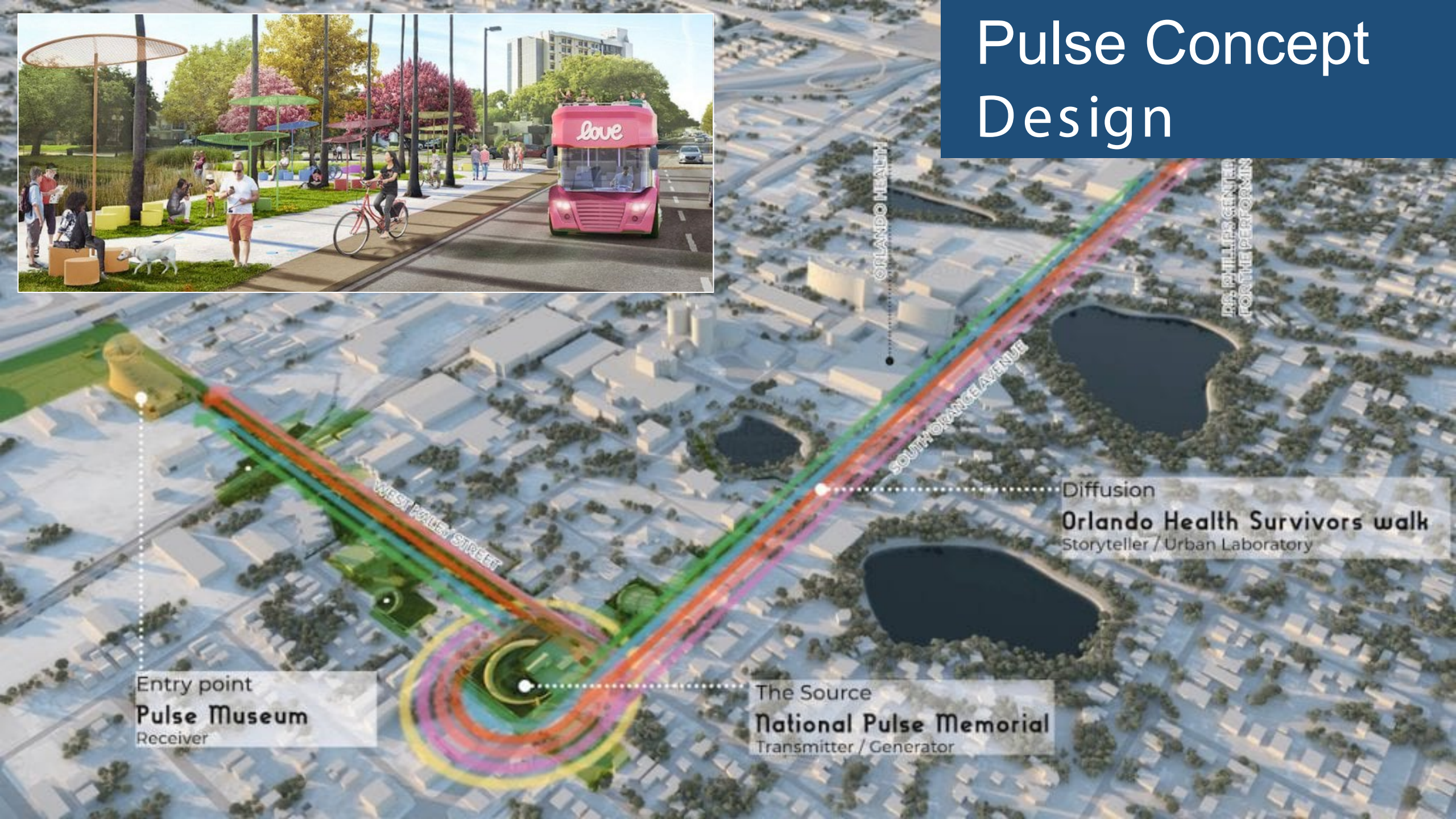
## Survivor's Walk

*Pedestrian/Bicycle infrastructure improvements are planned along Orange Ave. from the Pulse site at Kaley Street to ORMC*





# Pulse Concept Design



Entry point  
**Pulse Museum**  
Receiver

The Source  
**National Pulse Memorial**  
Transmitter / Generator

Diffusion  
**Orlando Health Survivors walk**  
Storyteller / Urban Laboratory

WEST WALKER STREET

SOUTH ORANGE AVENUE

ORLANDO HEALTH

PHILLIPS CENTER  
FOR THE PERFORMING



# O-Line Corridor



# O-Line Potential Alignment

## BENEFITS

- *Transit-oriented development opportunities over time*
- *Spur economic development in the District*
- *Improved mobility infrastructure and network*
- *Improved safety*
- *Improved access to the downtown core*





# O-Line Potential Alignment

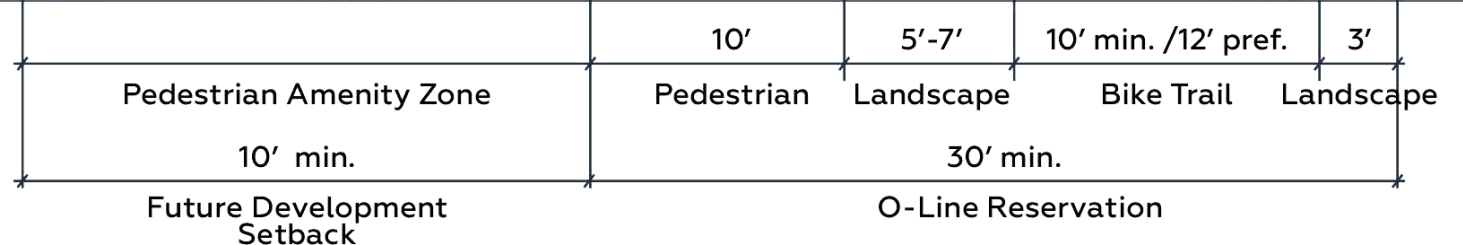
## BENEFITS

- *Transit-oriented development opportunities over time*
- *Spur economic development in the District*
- *Improved mobility infrastructure and network*
- *Improved safety*
- *Improved access to the downtown core*





# Typical Cross Section





# Survey Results



# Public Input Survey



*Complete the quick survey by scanning the QR Code above or click the url here:*

<https://www.surveymonkey.com/r/Q898J33>

# Available: Aug 19 - Aug 31

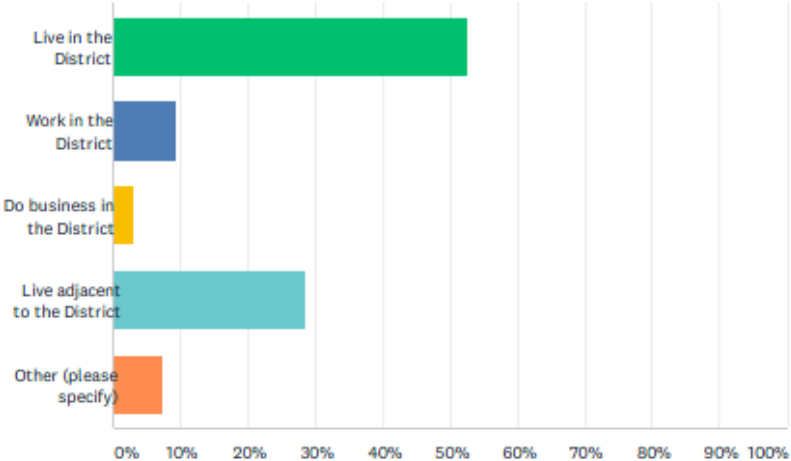
A promotional poster for the O-Line survey. At the top, it says 'SHARE YOUR OPINION TODAY!' and 'O-LINE'. Below this is an illustration of a modern urban street with a green, leafy structure over a walkway, palm trees, and a train. Text on the right side of the illustration reads: 'A 'green spine' that will provide an oasis extending through the urban and industrial area of South Orlando.' Below the illustration, a blue banner states 'Survey available from: WEDNESDAY AUGUST 19th - MONDAY AUGUST 31st'. To the right of this banner is a smaller QR code. Below the blue banner, a green banner contains the text: 'Complete the brief survey by scanning the QR Code above or click the url here: <https://www.surveymonkey.com/r/Q898J33>'. The bottom section of the poster has a white background with text: 'In coordination with the O-Line Public meeting held on August 19th, we are providing an online survey to provide comments and suggestions for the proposed conceptual design for Phase One of the project. Please complete the survey by Monday, August 31st. Comments and input will be used by the design team as we finalize the design for this important project in the SoDo District.' At the bottom right are logos for 'CITY OF ORLANDO' and 'SODO DISTRICT'. A final green banner at the very bottom says: 'IF YOU HAVE ANY QUESTIONS PLEASE FEEL FREE TO CALL: Martin Hudson @ 407.246.3242 or email [martin.hudson@orlando.gov](mailto:martin.hudson@orlando.gov)'.



# Survey Results

## Q1 What is your interest in the SODO district?

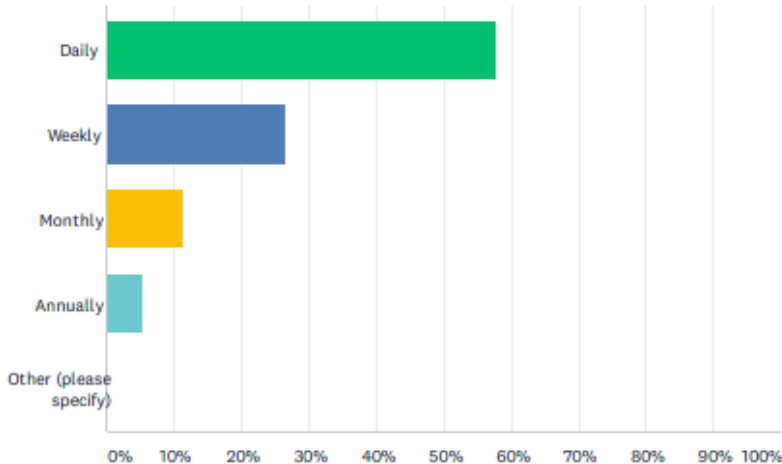
Answered: 99 Skipped: 0



ANSWER CHOICES	RESPONSES	
Live in the District	52.53%	52
Work in the District	9.09%	9
Do business in the District	3.03%	3
Live adjacent to the District	28.28%	28
Other (please specify)	7.07%	7
<b>TOTAL</b>		<b>99</b>

## Q2 How often do you visit the SODO District?

Answered: 99 Skipped: 0



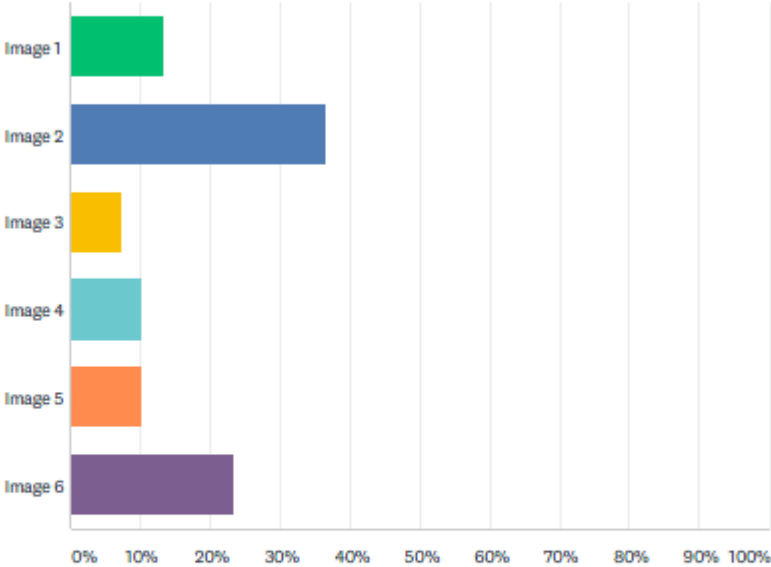
ANSWER CHOICES	RESPONSES	
Daily	57.58%	57
Weekly	26.26%	26
Monthly	11.11%	11
Annually	5.05%	5
Other (please specify)	0.00%	0
<b>TOTAL</b>		<b>99</b>



# Survey Results

Q3 In looking at the following images, which do you like best as it pertains to the user experience that may be proposed for the O-Line?

Answered: 99 Skipped: 0



ANSWER CHOICES	RESPONSES	
Image 1	13.13%	13
Image 2	36.36%	36
Image 3	7.07%	7
Image 4	10.10%	10
Image 5	10.10%	10
Image 6	23.23%	23
TOTAL		99

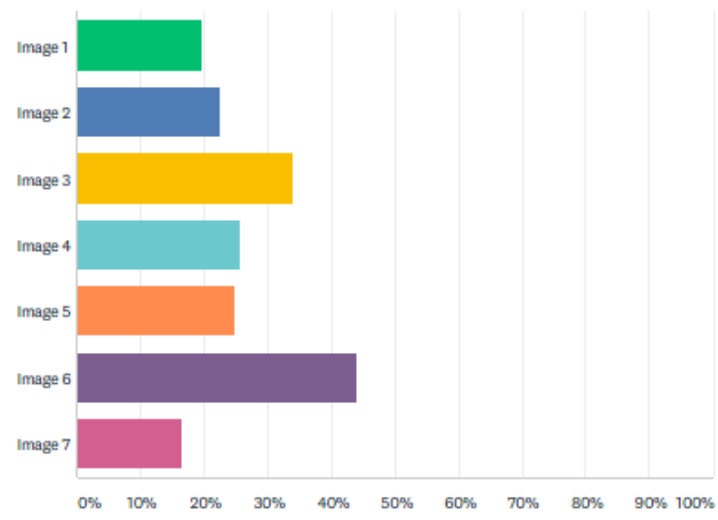




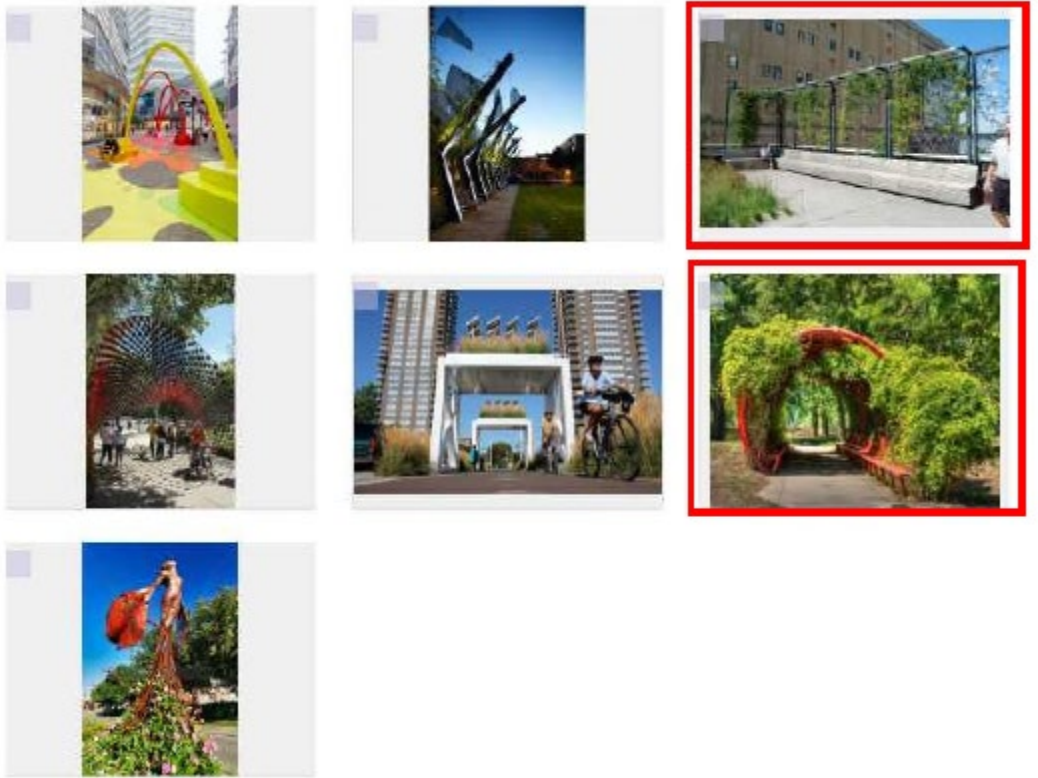
# Survey Results

Q4 In looking at the following images, which do you like best as it pertains to the artistic design elements that may be proposed for the O-Line?  
(check all that apply)

Answered: 98 Skipped: 1



ANSWER CHOICES	RESPONSES	
Image 1	19.39%	19
Image 2	22.45%	22
Image 3	33.67%	33
Image 4	25.51%	25
Image 5	24.49%	24
Image 6	43.88%	43
Image 7	16.33%	16
Total Respondents: 98		





# Survey Results

Q5 Please describe why you chose the above images for the two previous questions.

Answered: 89 Skipped: 10

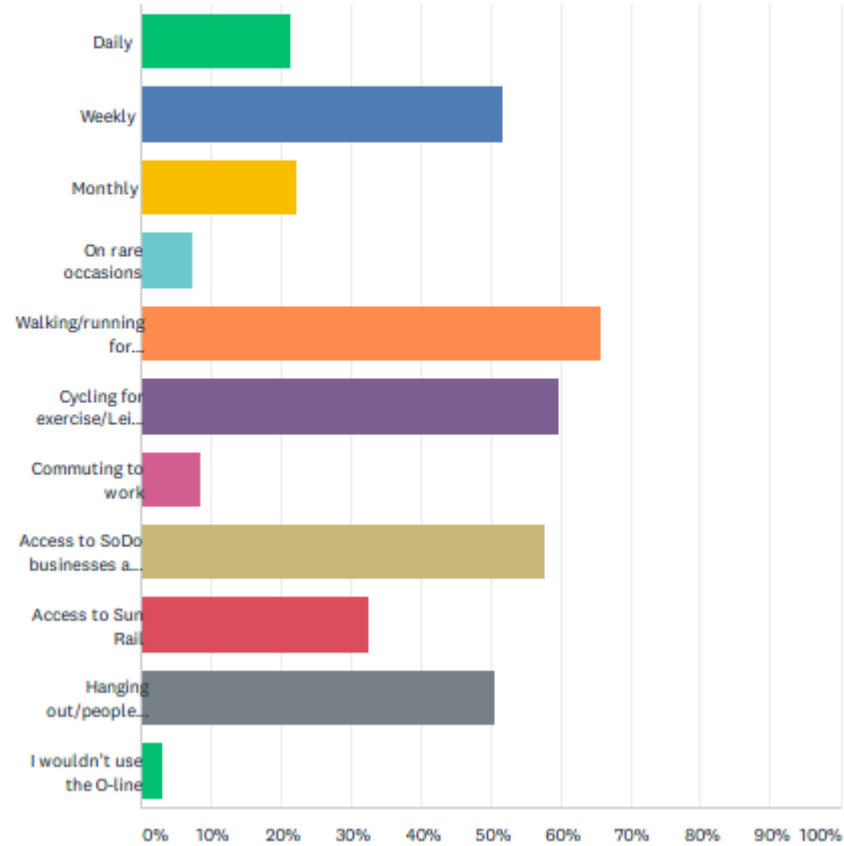
- Urban, modern, **green**, open
- **Separate** identified biking/walking path beneficial (Q3)
- Greenery/occasional **shade** spots with art that blends in (Q4)
- Lighting, interesting textures, blending of natural elements with user-friendly features
- **Separating the bike lanes** from the pedestrian lanes is important, and I like vines
- Colorful. Fun. Provide **shade**.
- These look like it will make for an interesting ride.
- There are **trees**!
- I would like to see a lot of **shade** since it is so hot so much of the time.
- Art and **trees**!!
- **Trees/foliage** are important and I think incorporating both those and some artistic elements to create some shade would be ideal.
- I think there should be lots of **foliage and trees** so it feels organic.
- Should be good for pedestrians and bikes. Lots of **vegetation, trees**.
- Modern and provide for both pedestrian and bicycle multi use
- I like the openness and that it isn't too overbearing
- visually appealing
- we need **shade**!
- We need **shade and natural scenery** to beat the heat and reintroduce nature.
- Mix of **greenery** and pedestrian along within the urban area
- Large Art Pieces and **Shade**
- The most organic integration of natural and deliberate elements, along with a cozy feel for the user.
- I like the use of **plants and green stuff** to break up all the concrete in the area.



# Survey Results

Q6 If the O-Line is built, how often would you use it and what activities would you be interested in? (check all that apply)

Answered: 99 Skipped: 0



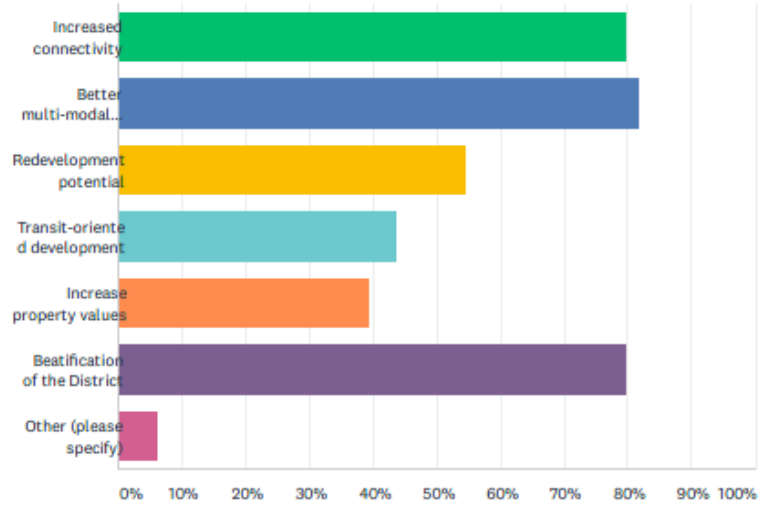
ANSWER CHOICES	RESPONSES	Count
Daily	21.21%	21
Weekly	51.52%	51
Monthly	22.22%	22
On rare occasions	7.07%	7
Walking/running for exercise/leisure	65.66%	65
Cycling for exercise/Leisure	59.60%	59
Commuting to work	8.08%	8
Access to SoDo businesses and amenities	57.58%	57
Access to Sun Rail	32.32%	32
Hanging out/people watching	50.51%	50
I wouldn't use the O-line	3.03%	3
Total Respondents: 99		



# Survey Results

## Q7 What do you think are the greatest opportunities for the O-Line Multi-use Trail project? (check all that apply)

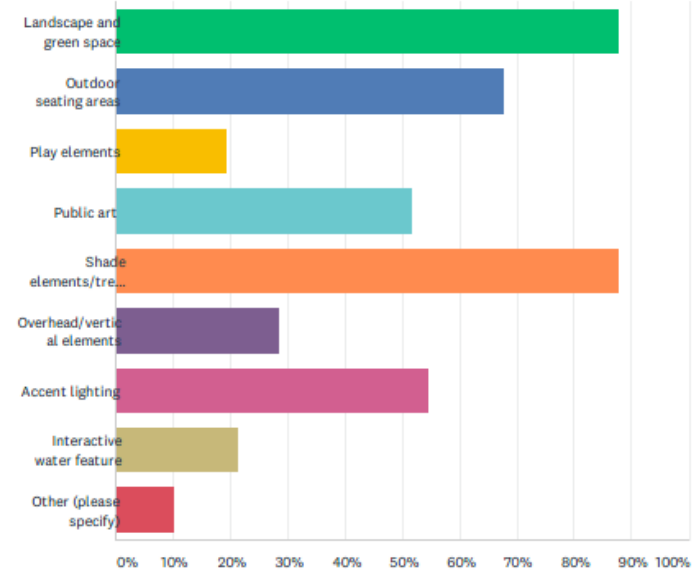
Answered: 99 Skipped: 0



ANSWER CHOICES	RESPONSES
Increased connectivity	79.80% 79
Better multi-modal transportation for biking and walking	81.82% 81
Redevelopment potential	54.55% 54
Transit-oriented development	43.43% 43
Increase property values	39.39% 39
Beatification of the District	79.80% 79
Other (please specify)	6.06% 6
Total Respondents: 99	

## Q8 What elements would you most like to see incorporated into the O-Line Multi-use Trail project? (check all that apply)

Answered: 99 Skipped: 0



ANSWER CHOICES	RESPONSES
Landscape and green space	87.88% 87
Outdoor seating areas	67.68% 67
Play elements	19.19% 19
Public art	51.52% 51
Shade elements/tree canopy	87.88% 87
Overhead/vertical elements	28.28% 28
Accent lighting	54.55% 54
Interactive water feature	21.21% 21
Other (please specify)	10.10% 10
Total Respondents: 99	

# Survey Results

Q9 Do you have any general comments regarding the O-Line Multi-use Trail project? If you are not familiar with the project, please enter 'I don't know about the project'.

Answered: 53 Skipped: 46

- update

- update



# Survey Results: Summary

- Include shade, trees, natural/native plants, greenery
- Separate pedestrian and bike paths, functionality
- Urban, modern, contemporary
- Incorporating artistic elements
- Organic, natural materials
- Openness and simplicity
- Safe, inviting, well-lit

*“Hope to see it happen. Orlando definitely needs more green, walkable spaces. Whenever we have visitors from out of town, we always take them to Park Ave in Winter Park because it's the most walkable and scenic area in Central Florida. Would be wonderful to have that aesthetic in SoDo.”*

# Conceptual Design



# Opportunities & Constraints





# Gateway /Architectural Elements





# Seating/Fence







Trail



# Vision





# Vision





# Vision





# Vision





# Vision



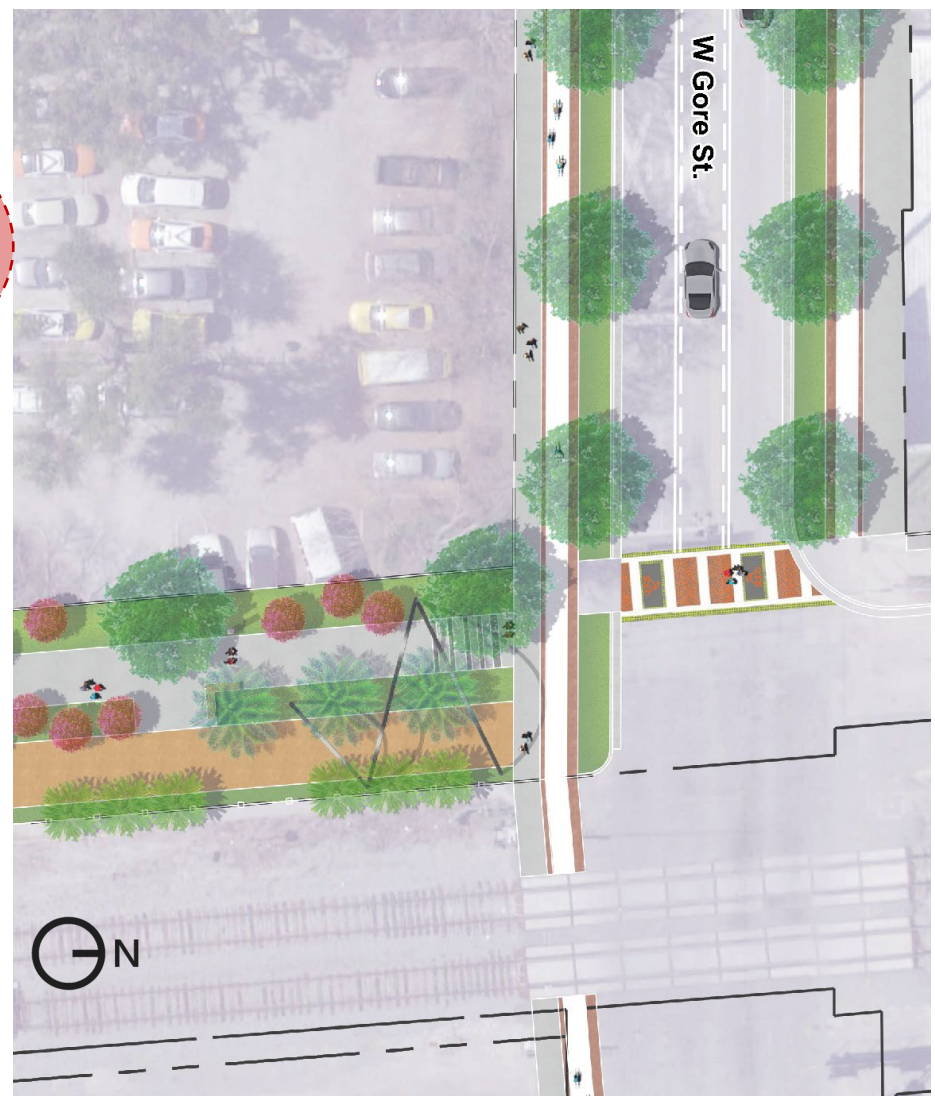
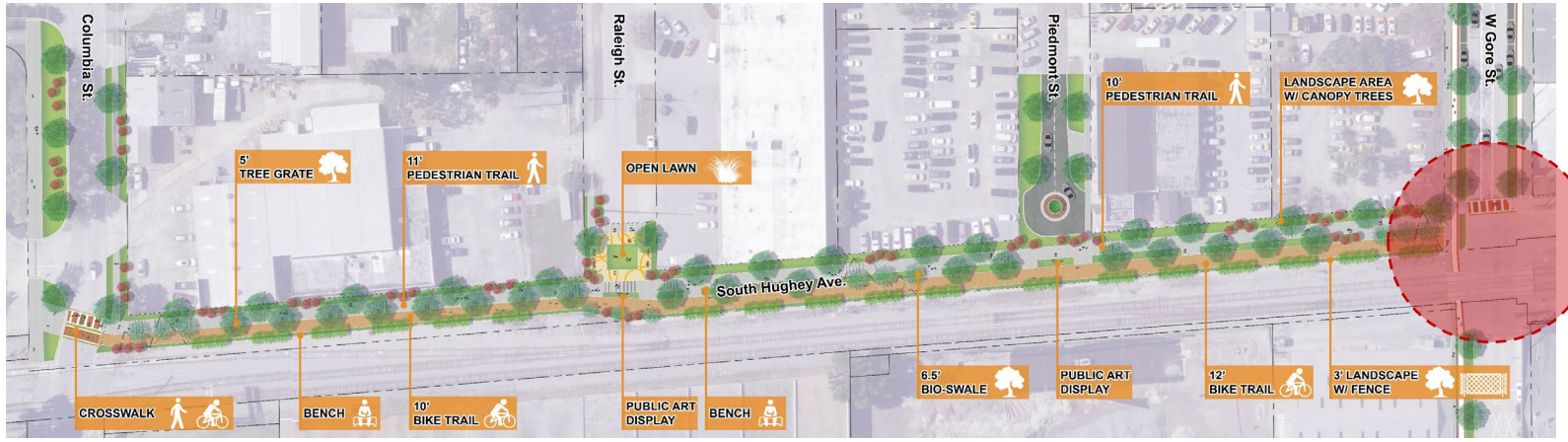


# Vision





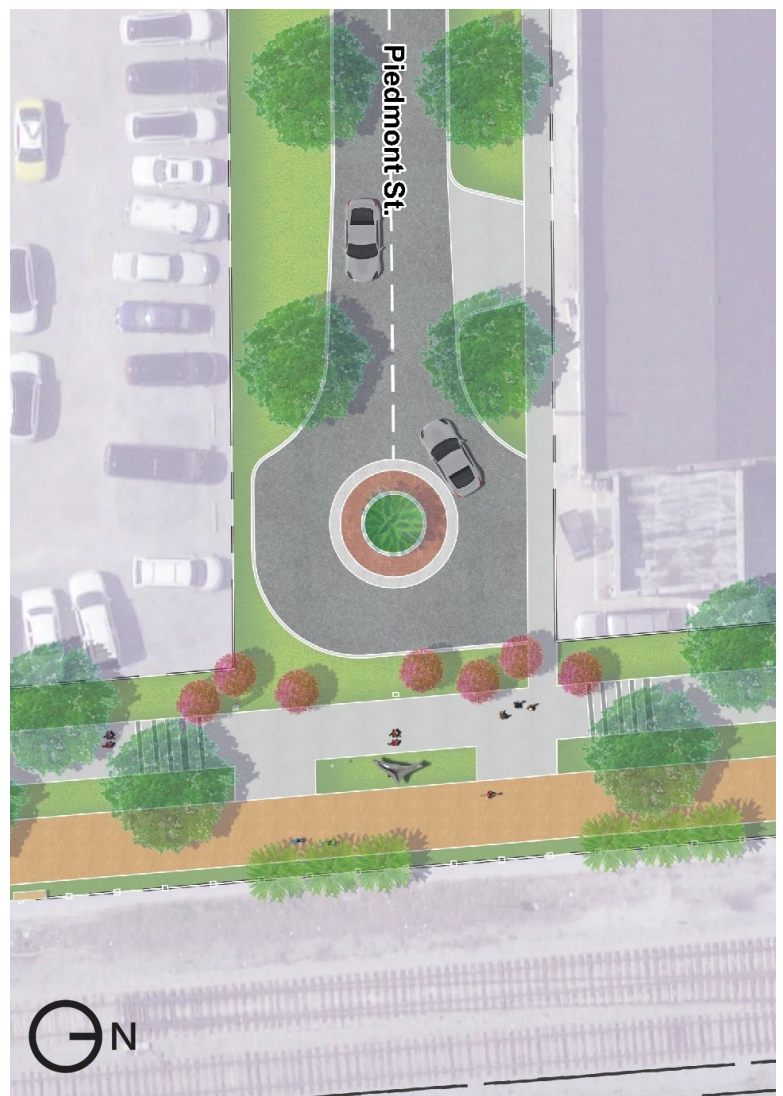
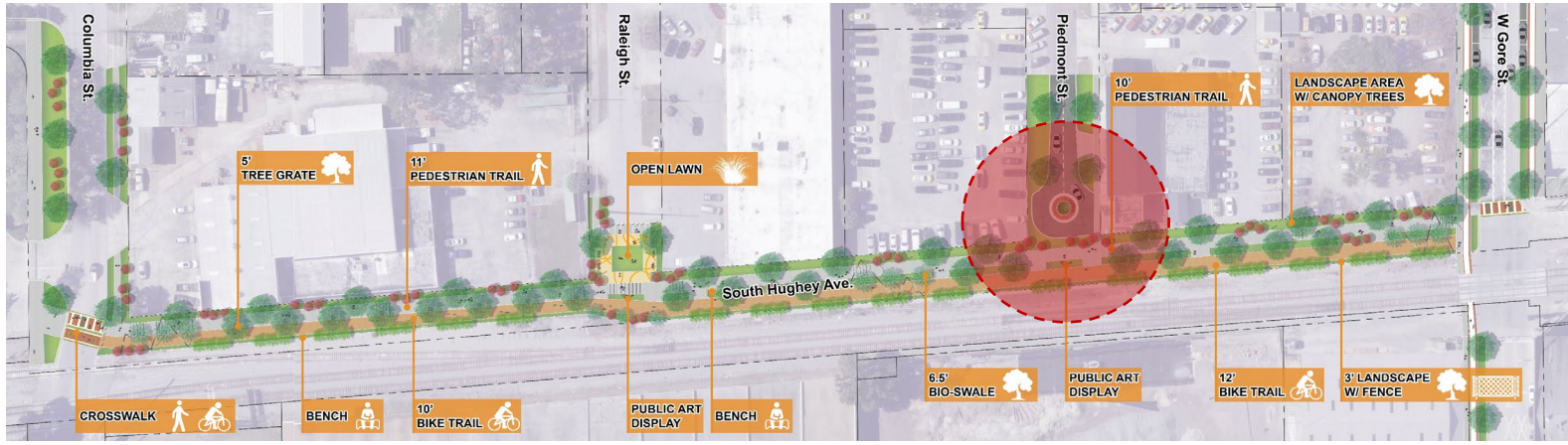
# Vision



Enlargement at Gore

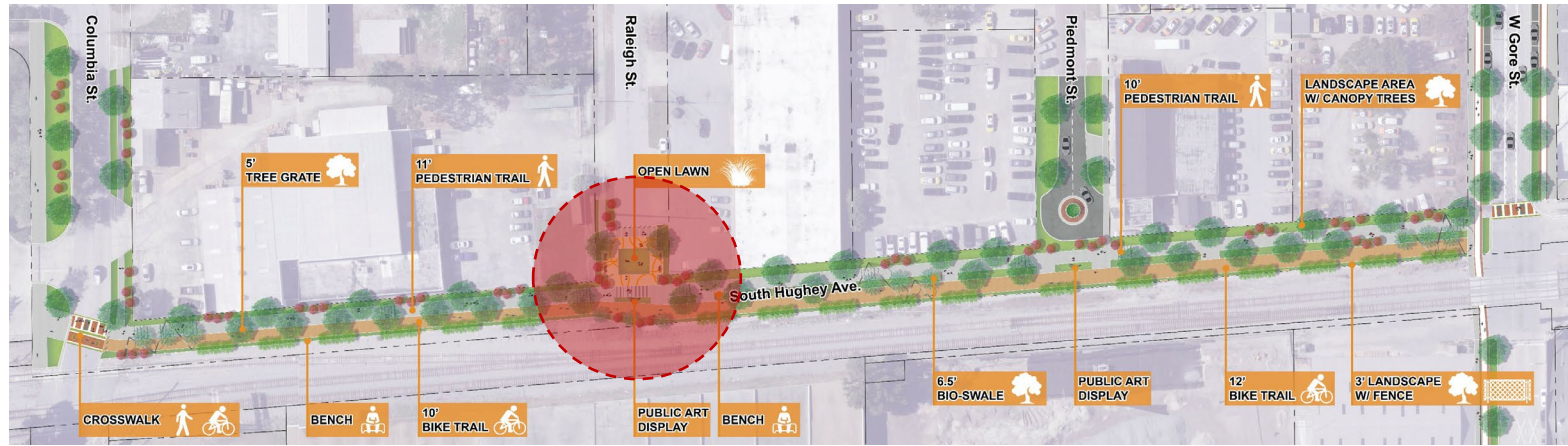


# Vision



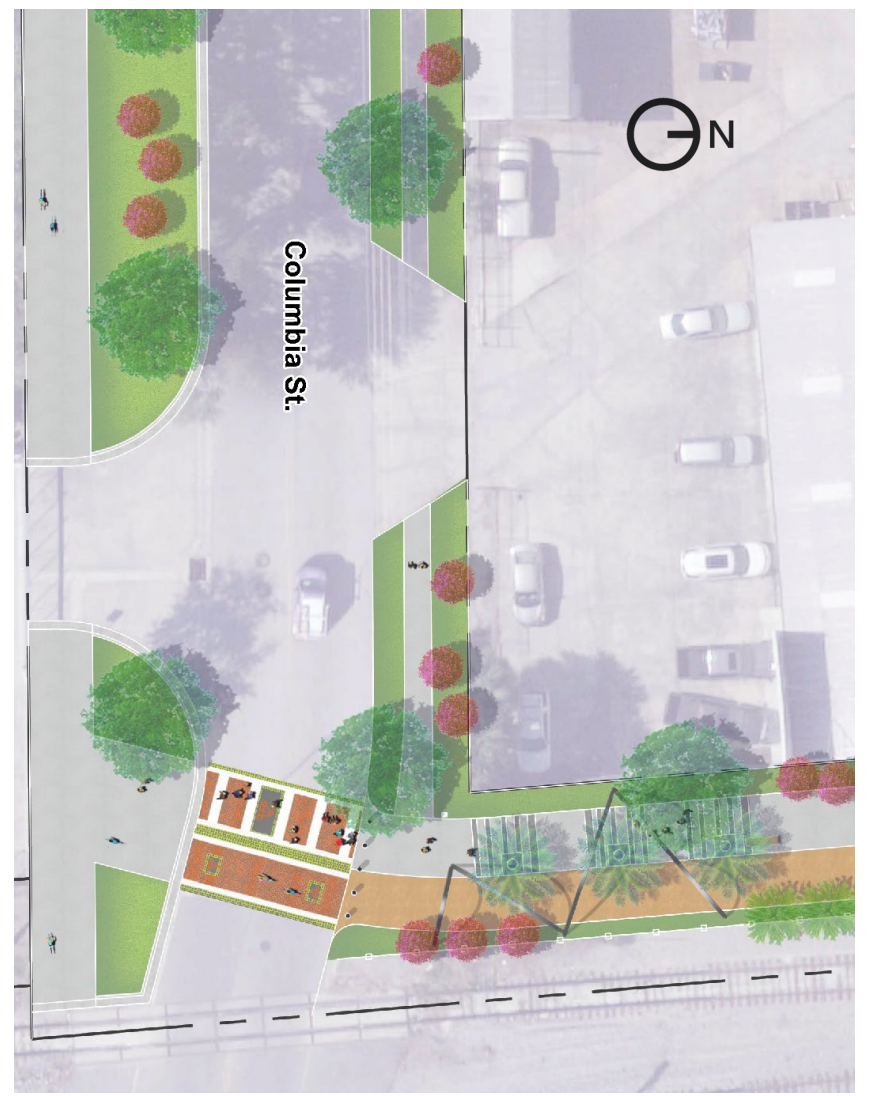
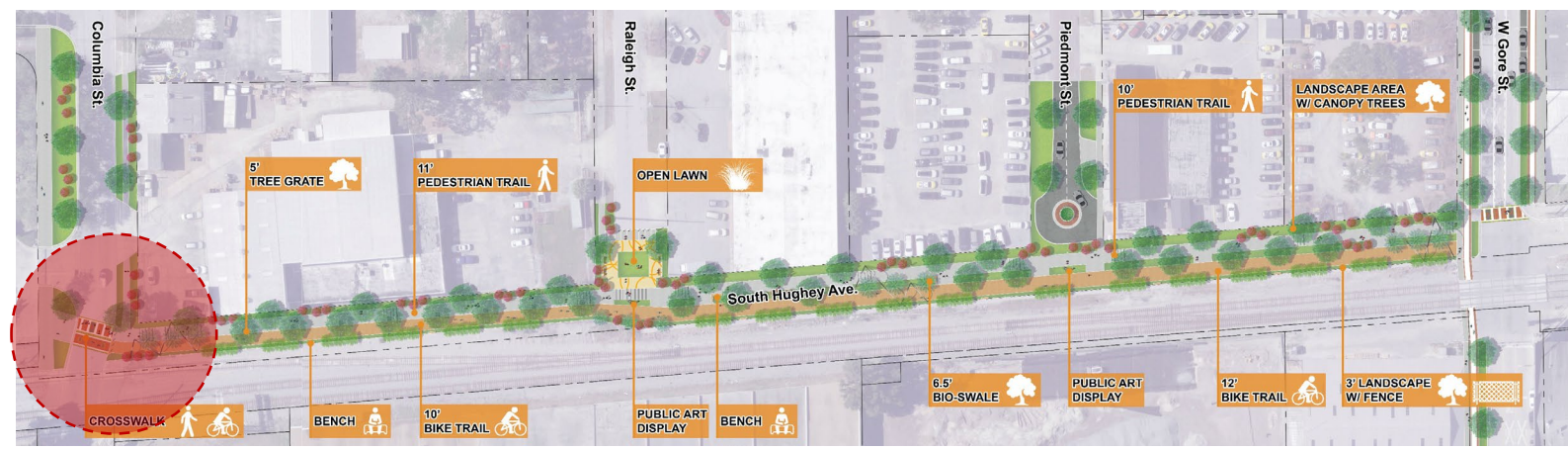


# Vision





# Vision



Enlargement at Columbia

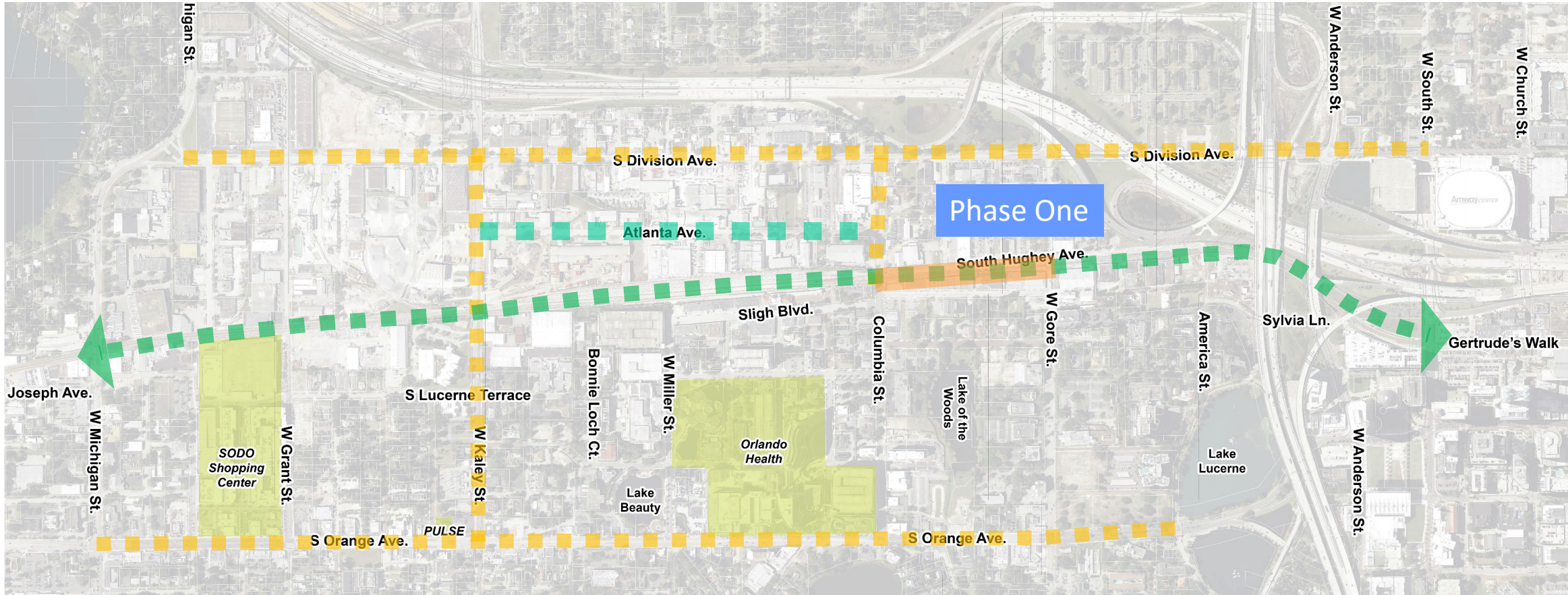


# Alignment Options



# Interim Alignment Options

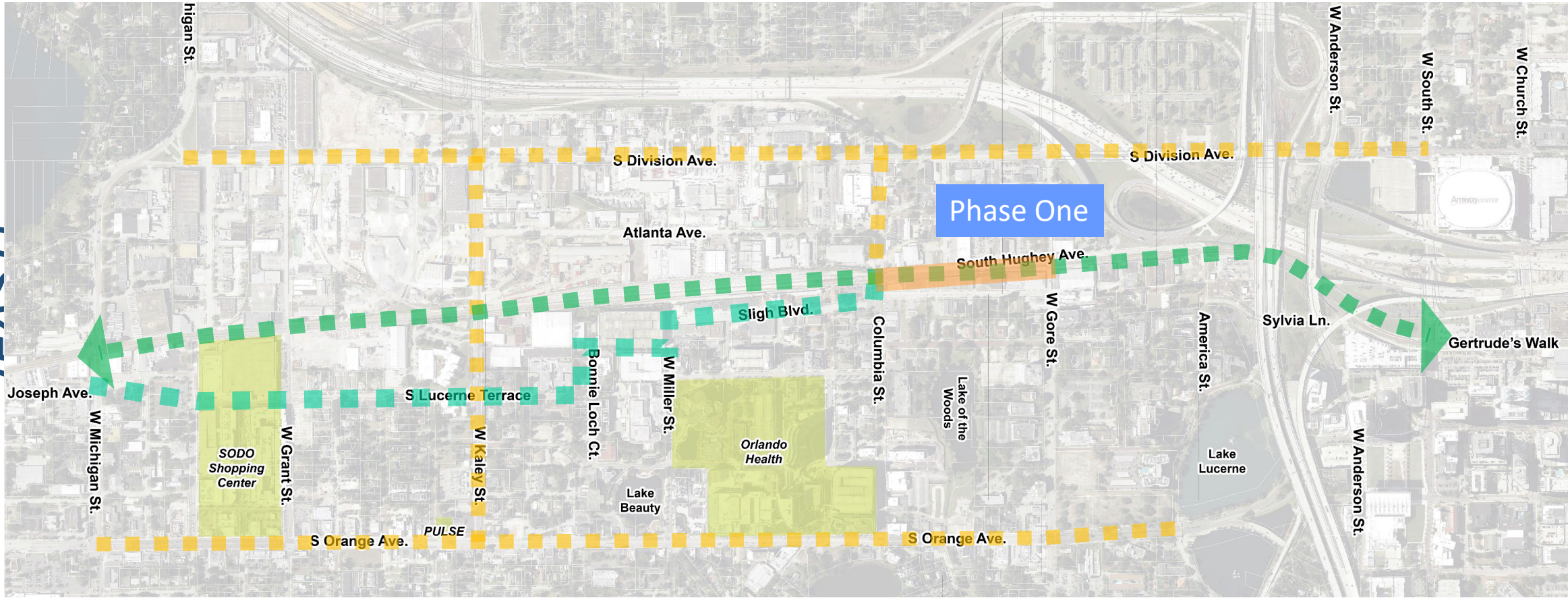
ATLANTA AVE.  
(WEST)





# Interim Alignment Options

SLIGH BLVD. /  
LUCERNE TERRACE  
(EAST)





# Questions/ *Discussion*