

A scenic view of the Lake Eola skyline in Orlando, Florida, during a vibrant sunset. The sky is filled with orange, yellow, and blue clouds. The water in the foreground reflects the colorful sky. In the background, several modern high-rise buildings are visible, including the PNC Financial Tower. A large, colorful rainbow sculpture is situated on the left side of the lake, and a fountain with a blue dome is on the right. The text 'LAKE EOLA MASTER PLAN OPEN HOUSE' is overlaid in white, bold, sans-serif font in the center of the image.

# LAKE EOLA MASTER PLAN OPEN HOUSE

# AGENDA

- Introductions
- Procurement Process:  
Progressive Design Build
- MBE/WBE Requirements
- Project Overview
- Questions and Answers



- **John Perrone**
- **Jerry Washington**

[john.perrone@cityoforlando.net](mailto:john.perrone@cityoforlando.net)  
[jerry.washington@orlando.gov](mailto:jerry.washington@orlando.gov)



**CIP Administration**

- Nicki Wesson [Eva.Wesson@cityoforlando.net](mailto:Eva.Wesson@cityoforlando.net)
- Mark Hirsch [Mark.Hirsch@orlando.gov](mailto:Mark.Hirsch@orlando.gov)



**Construction Manager**

- Bill Moricle [William.Moricle@orlando.gov](mailto:William.Moricle@orlando.gov)



**Park Operations**

- Jody Buyas [Jody.Buyas@cityoforlando.net](mailto:Jody.Buyas@cityoforlando.net)
- Quincy Richardson [Quincy.Richardson@cityoforlando.net](mailto:Quincy.Richardson@cityoforlando.net)



**FPR Management**

- Rodney Williams [Rodney.Williams@cityoforlando.net](mailto:Rodney.Williams@cityoforlando.net)
- Lisa Early [Lisa.Early@cityoforlando.net](mailto:Lisa.Early@cityoforlando.net)
- Denise Riccio [Denise.Riccio@cityoforlando.net](mailto:Denise.Riccio@cityoforlando.net)
- Beth Gruber [Beth.Gruber@cityoforlando.net](mailto:Beth.Gruber@cityoforlando.net)



**Economic Development / Placemaking**

- Sherry Gutch [Sherry.Gutch@cityoforlando.net](mailto:Sherry.Gutch@cityoforlando.net)
- David Barilla [David.Barilla@downtownorlando.com](mailto:David.Barilla@downtownorlando.com)
- Christina Hyson [Christina.Hyson@downtownorlando.com](mailto:Christina.Hyson@downtownorlando.com)



**Planning**

- Tim McClendon [Timothy.Mcclendon@orlando.gov](mailto:Timothy.Mcclendon@orlando.gov)
- Doug Metzger [Douglas.Metzger@cityoforlando.net](mailto:Douglas.Metzger@cityoforlando.net)



**Facilities Management**

- Navid Erfan [Navid.Erfan-nirizy@cityoforlando.net](mailto:Navid.Erfan-nirizy@cityoforlando.net)
- Andrew Phillips [Andrew.Phillips@orlando.gov](mailto:Andrew.Phillips@orlando.gov)



**Streets And Stormwater**

- Howard Elkin [Howard.Elkin@cityoforlando.Net](mailto:Howard.Elkin@cityoforlando.Net)



**Communications And Neighborhood Outreach**

- Tara Russakov [Tara.Russakov@cityoforlando.net](mailto:Tara.Russakov@cityoforlando.net)
- Lauri Brooks [Lauri.Brooks@cityoforlando.net](mailto:Lauri.Brooks@cityoforlando.net)



**Orlando Police Department**

- Eddie Rosado [Edward.Rosado@cityoforlando.net](mailto:Edward.Rosado@cityoforlando.net)
- Audra Rigby [Audra.Rigby@orlando.gov](mailto:Audra.Rigby@orlando.gov)



+



# CONSULTANT TEAM



**Principal**

Nikhel Jindal - [njindal@cphcorp.com](mailto:njindal@cphcorp.com)

**Project Manager**

Galen Pugh - [gpugh@cphcorp.com](mailto:gpugh@cphcorp.com)

**Deputy Project Manager**

Rodney Smith - [rsmith@cphcorp.com](mailto:rsmith@cphcorp.com)

**Principal Architect**

Mark Adams - [madamas@cphcorp.com](mailto:madamas@cphcorp.com)



**Site Civil Engineer**

Randy Augat - [raugat@bpa-engineers.com](mailto:raugat@bpa-engineers.com)



MTB|Engineering|Inc

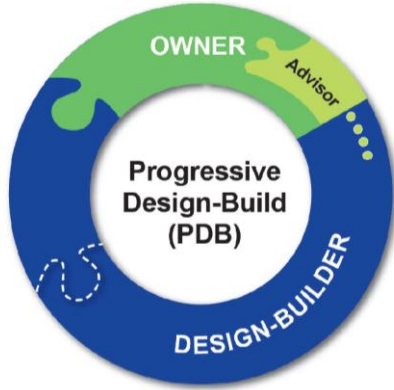
**Structural Engineer**

Melissa Blaney - [melissa.blaney@mtbengineering.com](mailto:melissa.blaney@mtbengineering.com)



+





# PROCUREMENT PROCESS: PROGRESSIVE DESIGN BUILD

- Selection Process Based on Qualifications
- Design Build Team shall be required to comply with the City of Orlando's Minority & Women-Owned Business Enterprise Ordinance (Chapter 57) and Veteran Business Enterprise (VBE) program (Chapter 7).
- The design-builder delivers the project in two distinct phases:
  - Phase One including design development and preconstruction services
  - Phase Two including construction
- Enables the City of Orlando to provide substantial input on the design decisions
- The City's eProcurement Portal can be accessed for free at <https://www.orlando.gov/Our-Government/Departments-Offices/OBFS/Procurement> or by scanning the QR Code Below:



- Search for City Certified M/WBE vendors at <https://cityoforlando.mwdbe.com>

# PARK HISTORY & OVERVIEW

Established in 1888

First Fountain Installed 1912  
and Replaced in 1957 by  
Current Linton E. Allen  
Memorial

1922 Swans Introduced

1988 Major Park Renovation  
to Revitalize Park and Control  
Pollution

2020 – 2021: Master Plan With  
Extensive Public Input to  
Create New Vision for the  
Future of the Park

# PROJECT OVERVIEW



The Muse

N. ROSALIND AVE.

Relax Grill

Restroom

Amphitheater

Washington Street Plaza

The Rookery

Terraced Seating

Sperry Fountain

E. CENTRAL BLVD.

Pier

E. ROBINSON ST.

Peninsula

Ting

Play Zone

Restroom

Play Zone

Festival Street

The Cove

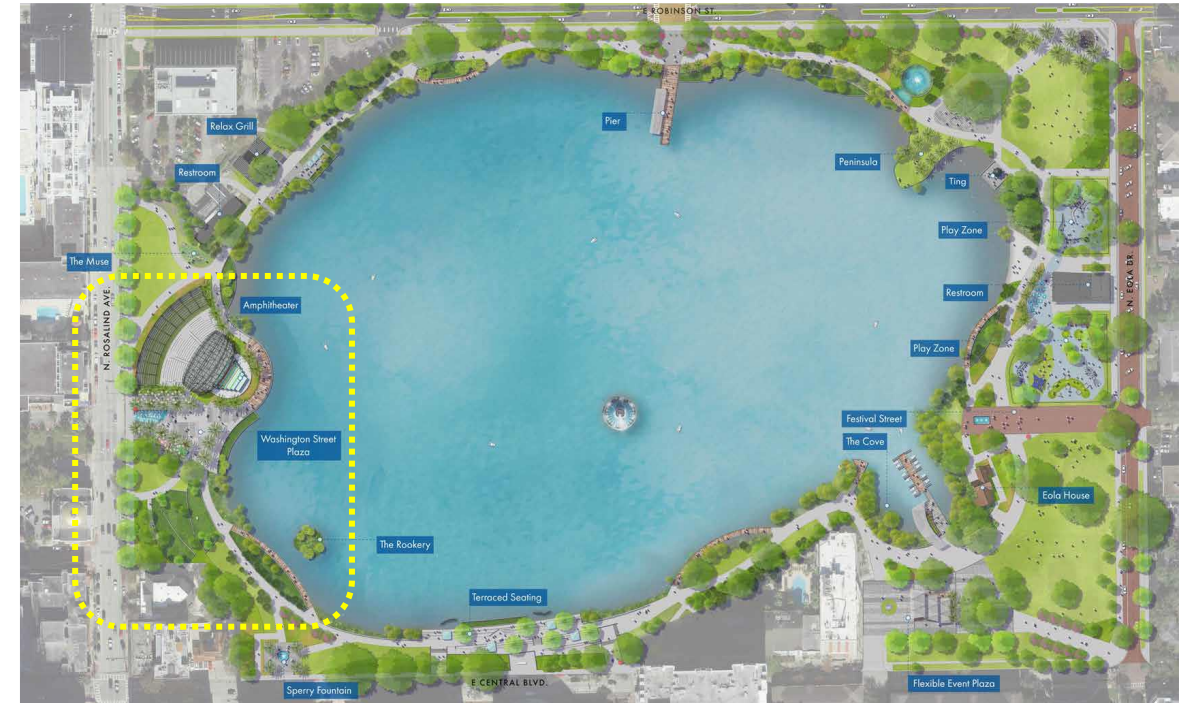
Eola House

N. EOLA DR.

Flexible Event Plaza

# AMPHITHEATER / WASHINGTON ST. PLAZA

- Improvements along Rosalind Avenue
- Amphitheater Shade Structure
- Expanded Shaded Seating for Events/Shows
- Plaza Improvements
- Water Feature
- Stepped Seating
- Enhanced Stormwater Basin
- Waterfront Promenade Wrapping the Amphitheater



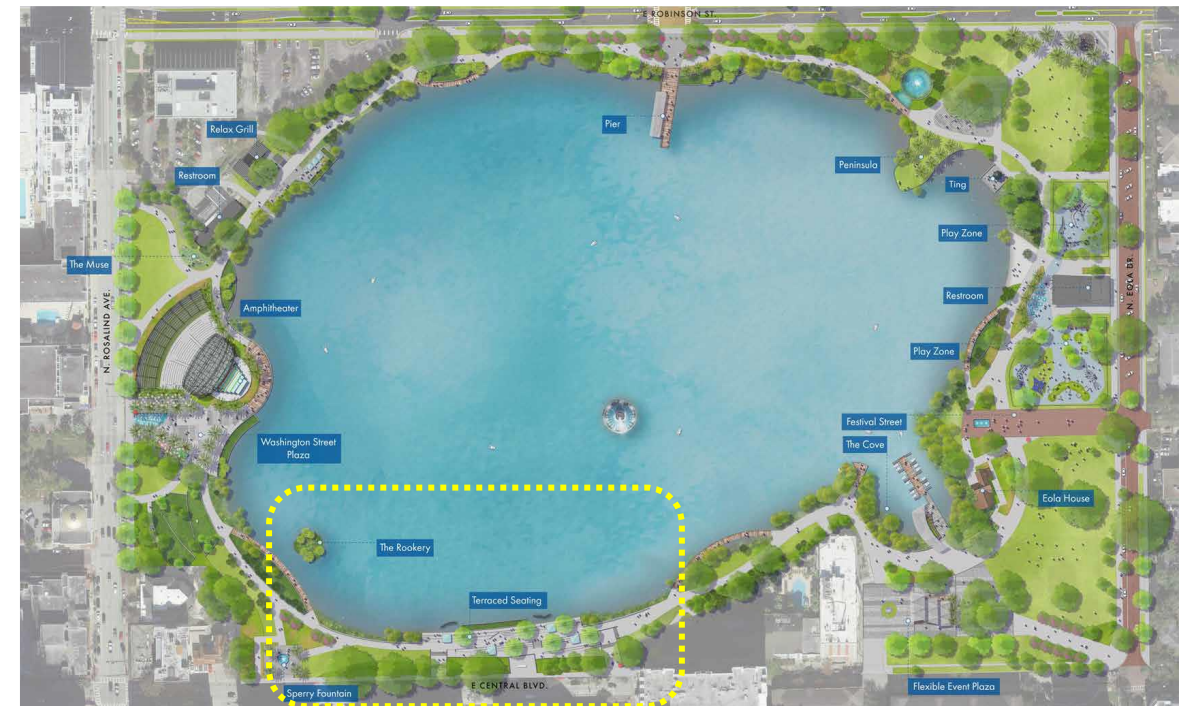
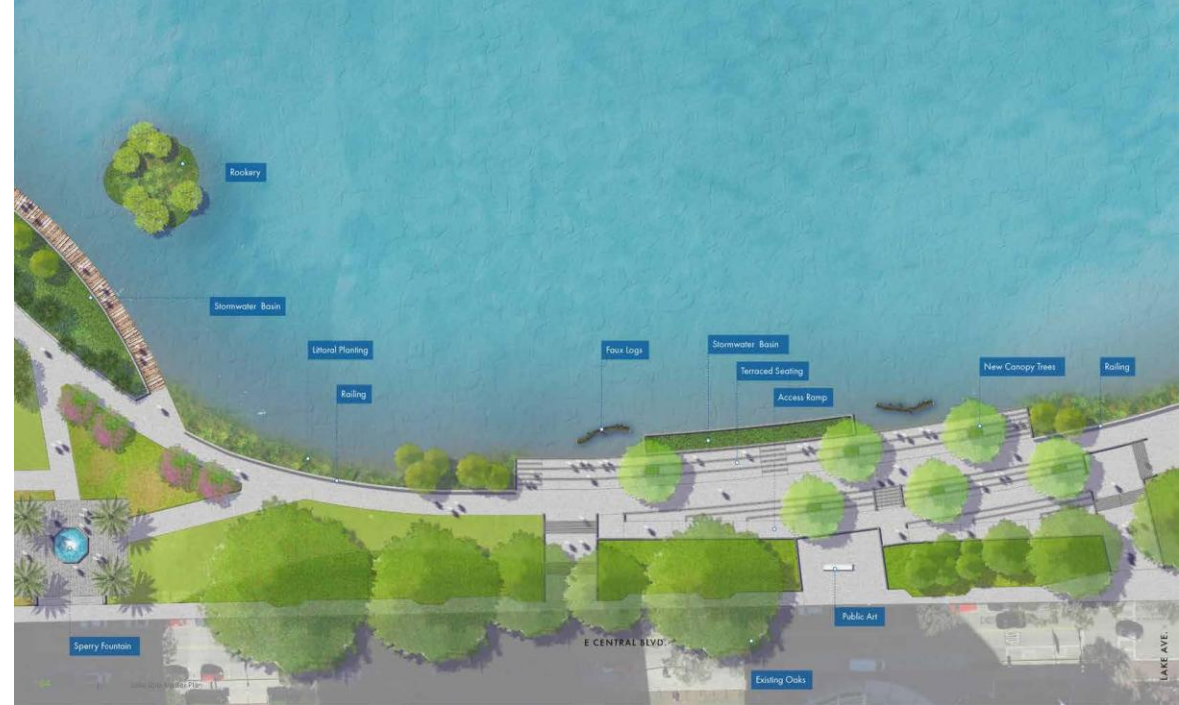


# AMPHITHEATER / WASHINGTON ST. PLAZA

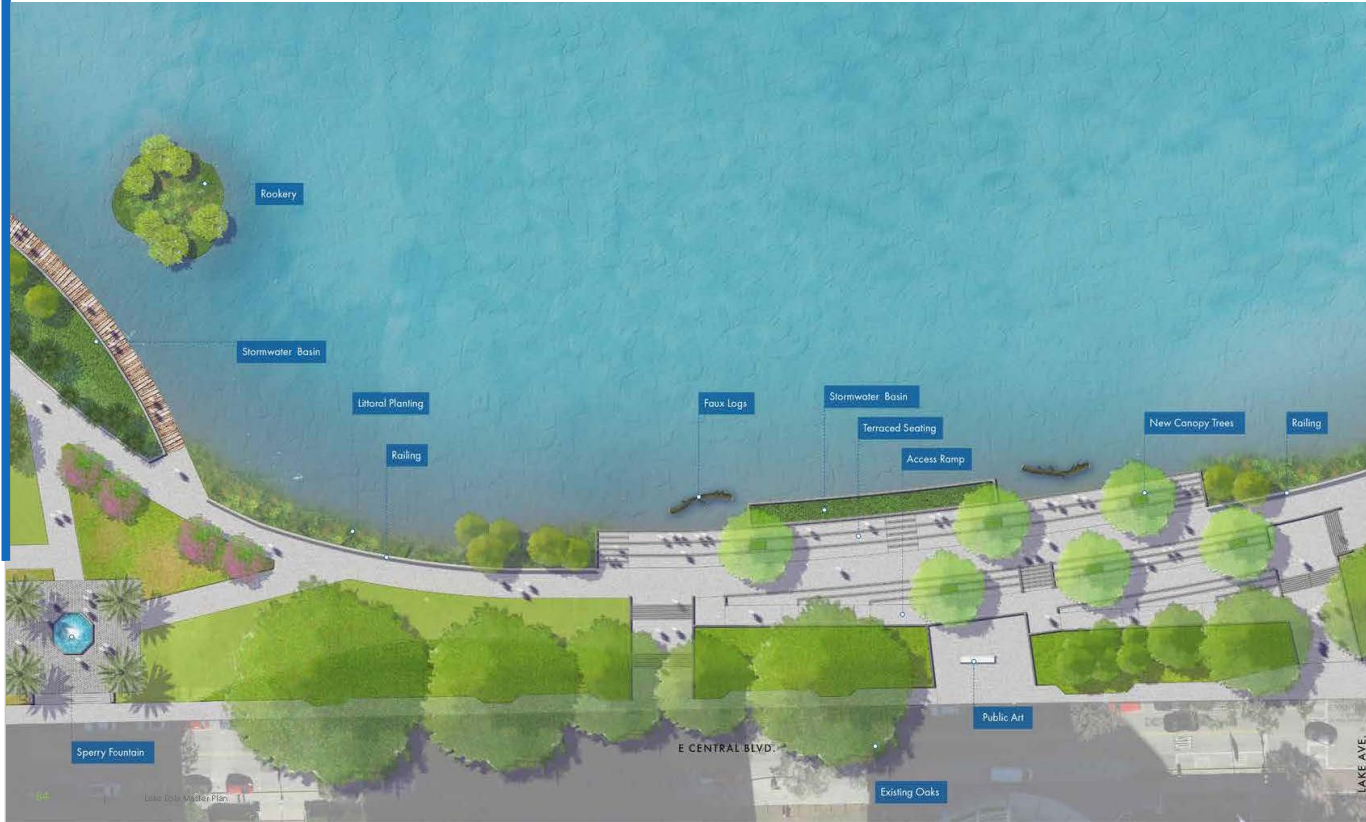


# EAST CENTRAL BLVD/ TERRACED SEATING

- Connect Master Plan Improvements to the Updated Sperry Fountain Area and Garden, Which Will Be Completed Prior to Eola Master Plan. This Area Will Need to Remain Open and Protected during Project Construction.
- Potential Public Art Space
- Terraced Seating with Promenade to Enjoy the Lake View
- Maintaining Existing Large Oak Trees Along Central Blvd
- Aquatic plantings and Stormwater Basins with Wooden Boardwalk
- Performance Area for Small Gatherings
- Addition of Shade (Landscape and Hardscape)



# EAST CENTRAL BLVD / TERRACED SEATING



# THE COVE / FESTIVAL STREET

- Creating a Natural Look Cove
- Open Multi-Use Lawn Area
- Large Festival Street and Gateway
- Boardwalk Around Stormwater Basin
- Swan Boat Rental Area and Deck
- Flexible Event Plaza Area with Dining and Public Art Potential
- Observation Area



# THE COVE / FESTIVAL STREET



# PLAY ZONES / EOLA DRIVE

- Updated New Restroom Building With Covered Seating
- Multiple Age-Appropriate Play Zones
- Boardwalk Around Storm Water Basin
- Mist Zone



# FAMILY & PLAY ZONES / EOLA DRIVE



# EOLA DRIVE

- Conversion Of Eola Drive Into A Unique Character Street
- Functional Design For Daily Use (Non-Event Days) And Event Use
- Multi-Modal Corridor Providing Mobility For Vehicles, Pedestrians, And Cyclists.
- Provide An Important Connection Between The Robinson Street Cycle-track And Proposed Improvements On Pine Street
- Event Operations To Serve As An Extension Of The Park And May Be Closed To Accommodate Vendors And Pedestrians, While Maintaining The Signature Oak Canopy Of The Park

Daily Use



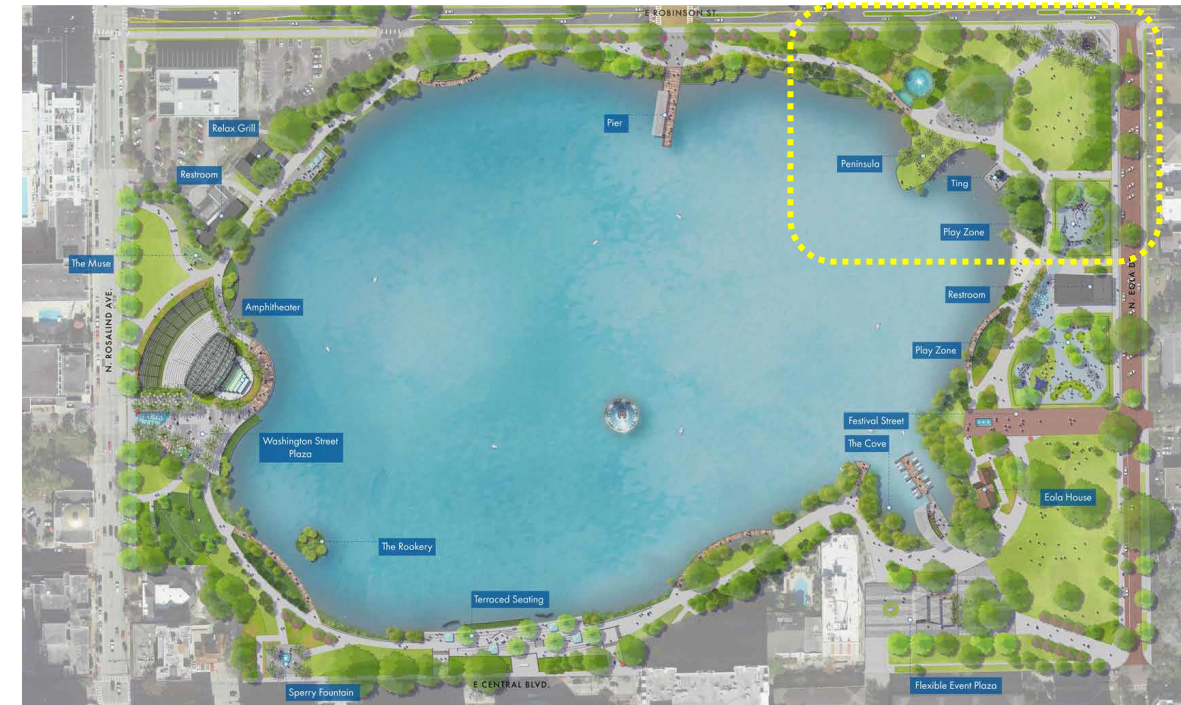
Event Use





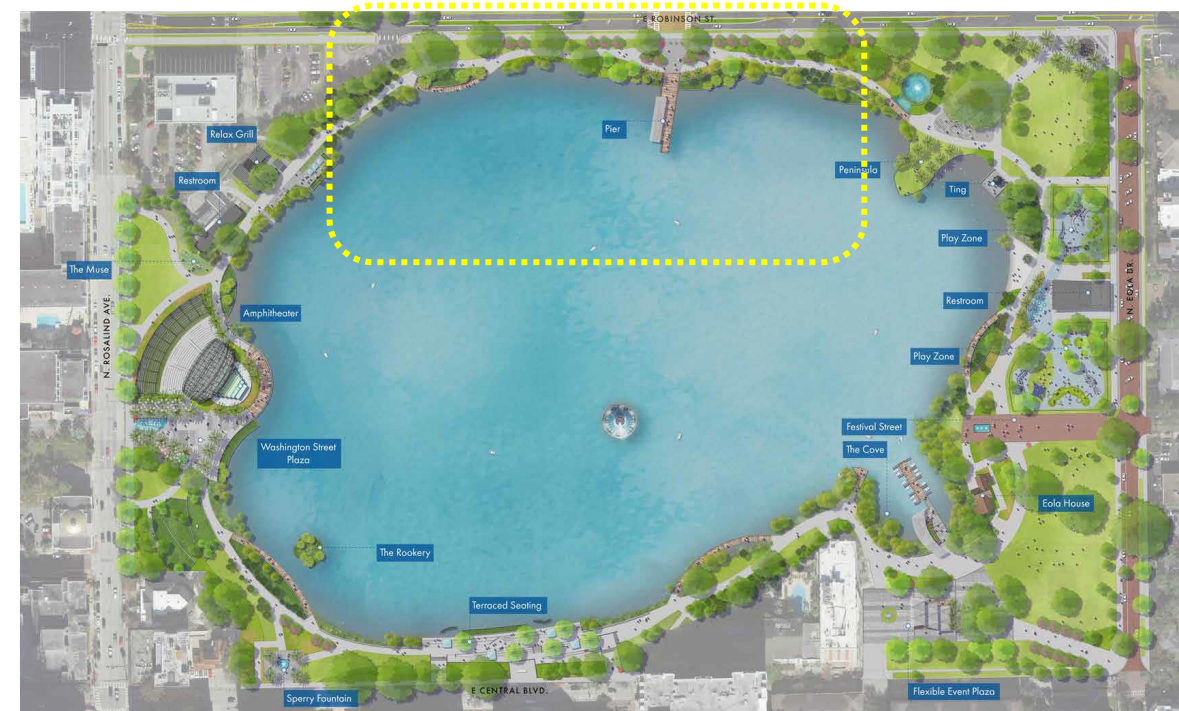
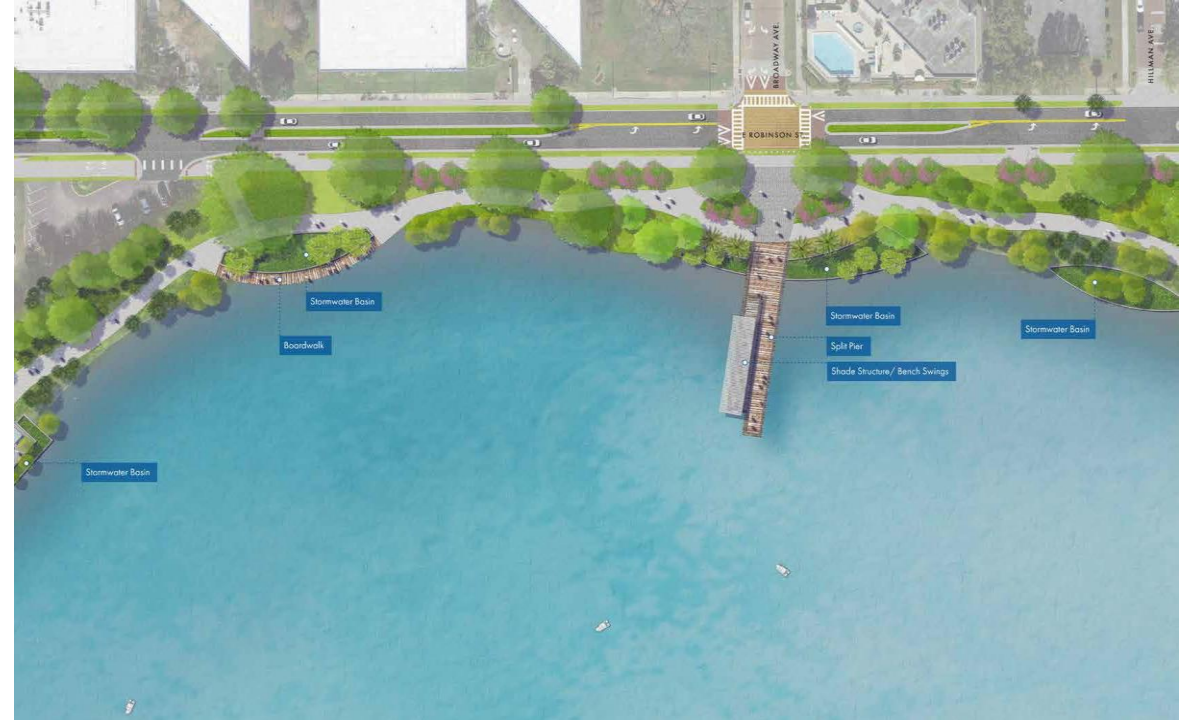
# NORTHEAST CORNER

- Peninsula Open Space Area
- Aquatic Garden/Water Feature with Outfall to Lake
- Boardwalk Modifications
- Storm Water basin
- Seating Area Adjacent to Memorial
- Flexible Open Lawn
- Ting Dock and Area Enhancements



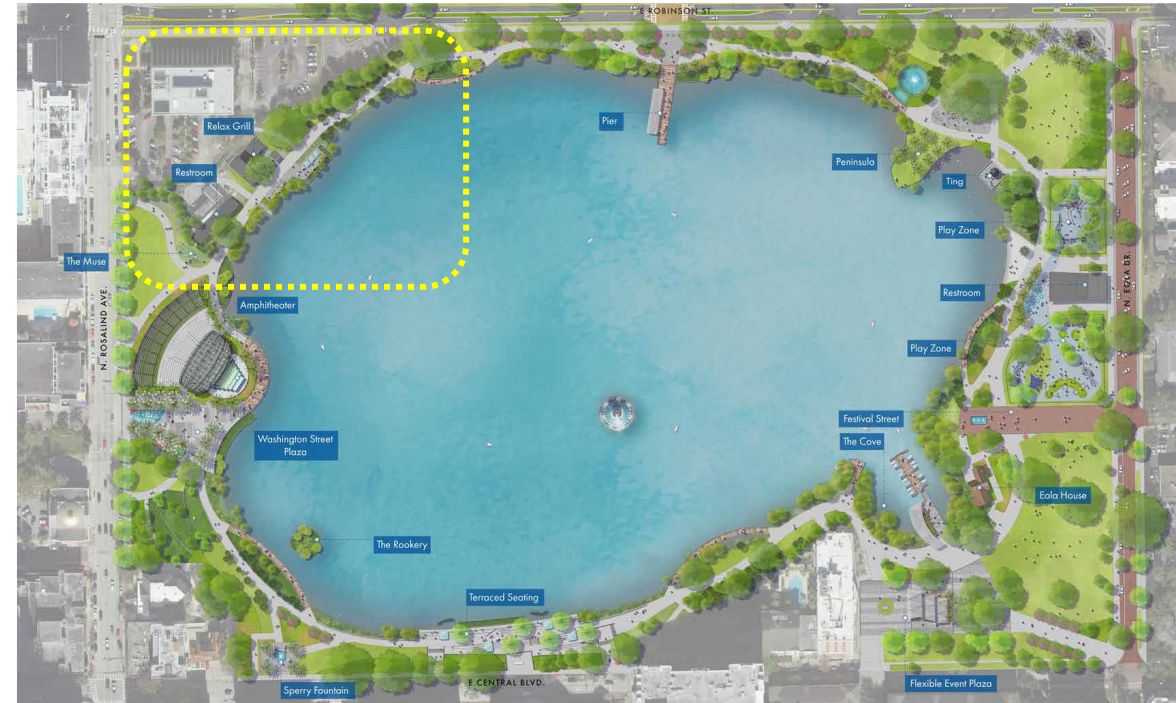
# NORTH GATEWAY

- Robinson Street Gateway at Broadway Avenue
- New Plaza
- Relocation of Flagpole
- Pier with Shade and Seating
- Storm Water Basins
- Florida Friendly Landscape Enhancements
- Preservation of Cypress Grove



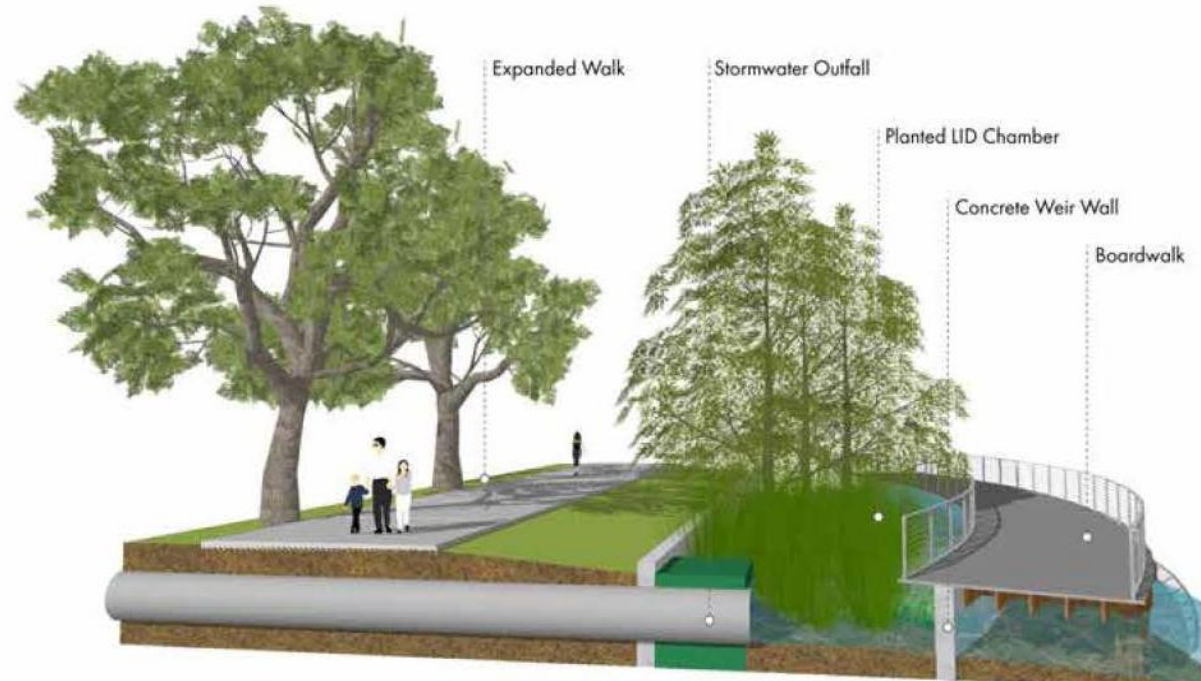
# WEST RESTROOM / RELAX GRILL

- Updated New Restroom Building with Seating Areas
- Food Service Area
- Expanded Dining Area
- Service Boat Access Area
- Relocation of Swan Boat Rental to the “Cove”
- Screening
- Enhanced Security and Lighting



# LAKE'S EDGE

- Repair and Replacement of Modular Block Retaining Wall
- Low Impact Design Improvements
- Water's Edge Improvements Including New Upland and Littoral Planting Zones
- Multiple Lake Edge Treatment Methods to Preserve Existing Tree Canopy



# PARK OPERATIONAL REQUIREMENTS

Design Build Team Will Need to Understand:

- Identifying and Prioritizing Park Events
- The Importance of Scheduling and Maintaining Events Based on Area Availability
- The Requirement of Phasing in Construction to Allow Park Events
- Understanding and Maintaining the Minimum Park Functions Throughout the Project Timeline





THANK YOU